



What is the Serial Inebriate Program?

In the spirit of innovation, MHS developed the Serial Inebriate Program (SIP) in partnership with law enforcement, emergency medical services, hospitals, and the courts. SIP provides a unique and cost-effective solution to the unsuccessful “revolving door” practices commonly used to deal with the often challenging and under-served population of chronic homeless alcoholics. Offering individuals deemed chronic inebriates treatment in lieu of custody, SIP provides intensive case management and access to services needed to achieve financial stability and long-term recovery.

Mental Health Systems

is a non-profit agency founded in 1978 to improve the lives of individuals, families and communities facing substance abuse and behavioral health challenges.

mhs MENTAL HEALTH SYSTEMS
mhsinc.org

Serial Inebriate Program (SIP)

3340 Kemper St, #105

San Diego, CA 92110

P (619) 523-8121 | F (619) 523-8742

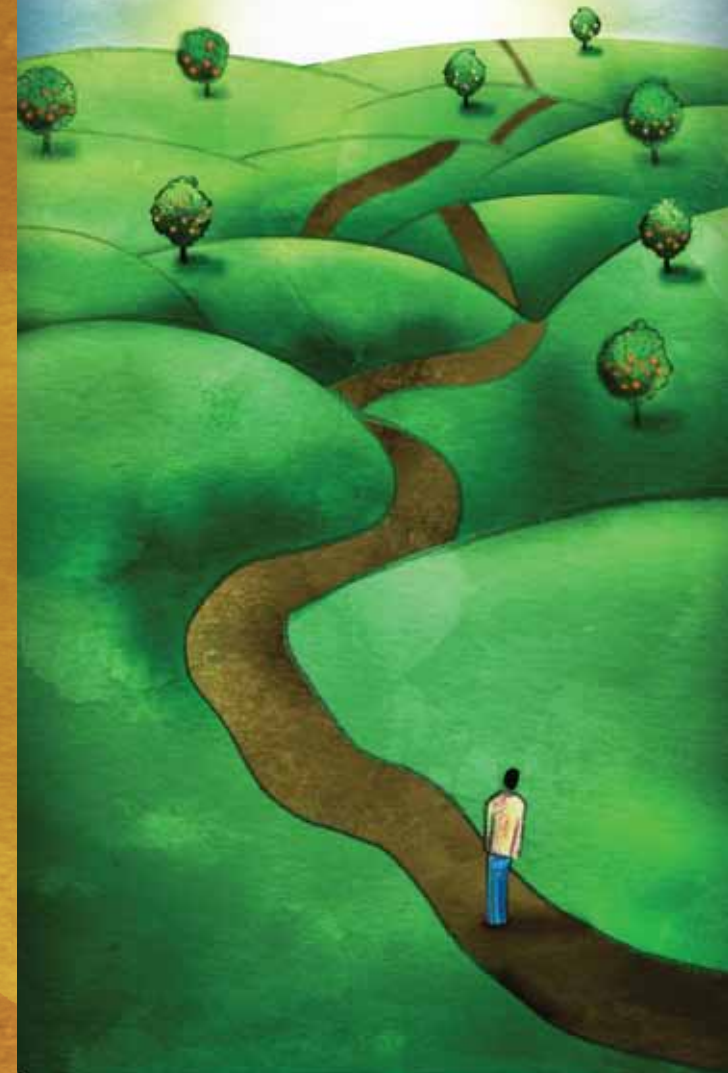


MHS is a 501(c)(3) non-profit corporation.

The Mental Health Systems Serial Inebriate Program is the collaborative effort of the following funders and partners:
The San Diego County Board of Supervisors
San Diego County Health & Human Services Agency, Alcohol and Drug Services
The San Diego Housing Commission • San Diego Superior Court
San Diego Police Department • Office of the San Diego City Attorney
San Diego County Office of the Public Defender • The San Diego District Attorney
San Diego County Sheriff's Department • San Diego Medical Services Enterprise
UCSD Medical Center • San Diego County Treatment Providers

mhs MENTAL HEALTH SYSTEMS

Serial Inebriate Program (SIP)



How Can the Serial Inebriate Program (SIP) Help?

Our Serial Inebriate Program diverts chronic homeless inebriates off the street, out of jails, emergency departments and the legal system and into treatment and a life of sobriety and stability.



How It Works

SIP provides case management and treatment services to chronic homeless inebriates through the following process. An individual is:

- Arrested for drunk-in-public five times within 30 days;
- Mandated to treatment in lieu of custody;
- Provided intensive case management, continuum of care, and access to available services;
- Transitioned into financial stability, permanent housing, and long-term recovery.



Who Do We Serve?

We serve chronic homeless inebriates who are offered treatment in lieu of custody through a court order. An individual is identified as a “chronic” inebriate by Inebriate Reception Center (IRC) staff after accumulating five transports to the IRC within 30 days. Following this classification, the person is placed in custody for the crime of Public Intoxication.

“I never had so many people working together to help me.”
- Program Alumni

