



NEVADA
HEALTH CENTERS

NEVADA HEALTH CENTERS, INC.
State-Wide Clinic Locations



NEVADA
HEALTH CENTERS

*Recognized by the
National Committee of
Quality Assurance as
your...*

***Patient Centered
Medical Home
(PCMH)***

**“Bringing
Quality Health
Care to
Nevada’s
Communities”**



NEVADA
HEALTH CENTERS

Our Services:

- **Care for the entire family**
- Preventive Medical Care
- School Based Health
- Care for Chronic Medical Conditions
- Gynecological Care*
- Prenatal, Delivery and Newborn Care*
- Family Planning
- Behavioral Health
- Restorative & Preventative Dentistry*
- Laboratory Services
- **Health Education/Self Management Support**
- Case Management
- Quality Management Reporting
- After Hours On-Call*





NEVADA
HEALTH CENTERS



WOMEN, INFANTS & CHILDREN

Starting healthy habits. Growing brighter futures.

1. WIC Arville
2. WIC Gowan
3. WIC N. Las Vegas
4. WIC Bonanza
5. WIC Tropicana
6. WIC MLK
7. WIC Cambridge

All WIC locations are open **Monday through Friday.**

7:30AM to 4:30PM Closed for lunch 12-1PM 1:00PM



NEVADA
HEALTH CENTERS

Dentistry



NVHC Mammovan





NEVADA
HEALTH CENTERS

Healthcare for the Homeless



Las Vegas Outreach Clinic

**Located on the campus
of Salvation Army at:**

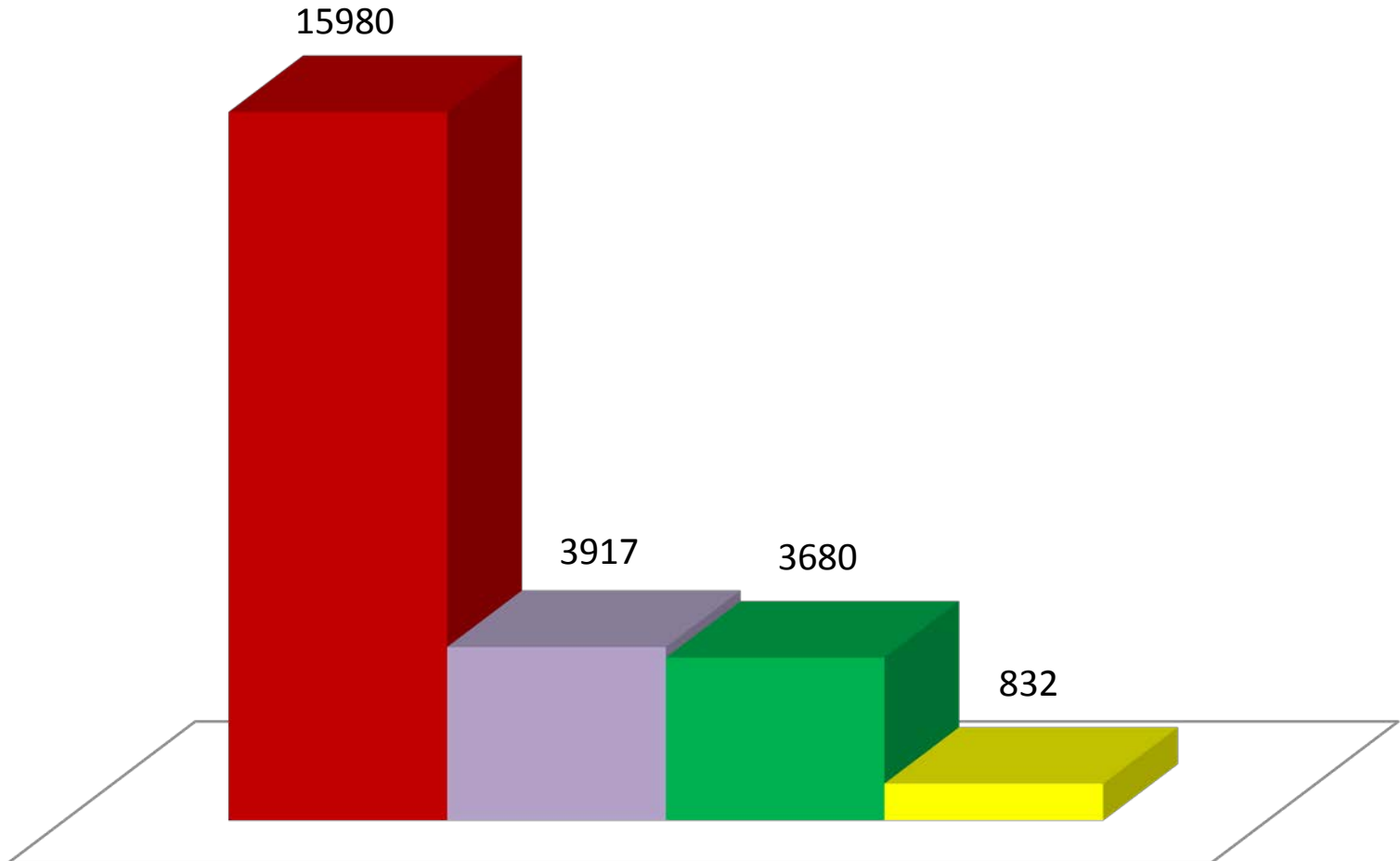
**47 W. Owens Ave
Las Vegas 89030**

**Hours of Operation
Monday –Friday
7:00am to 4:00pm**



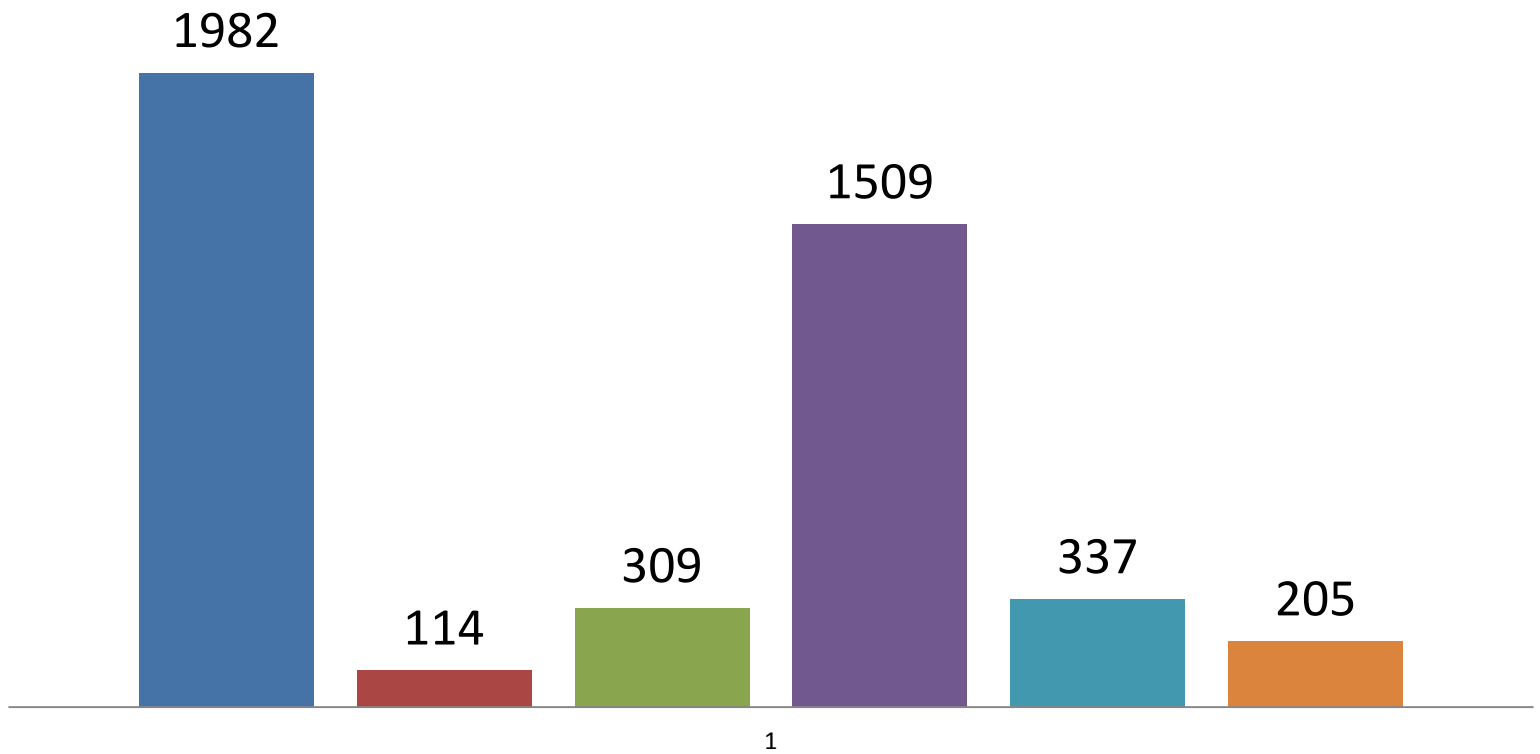
Guest Relations Enrollment 2013FY

■ Assists ■ Submitted ■ MED ■ QHP



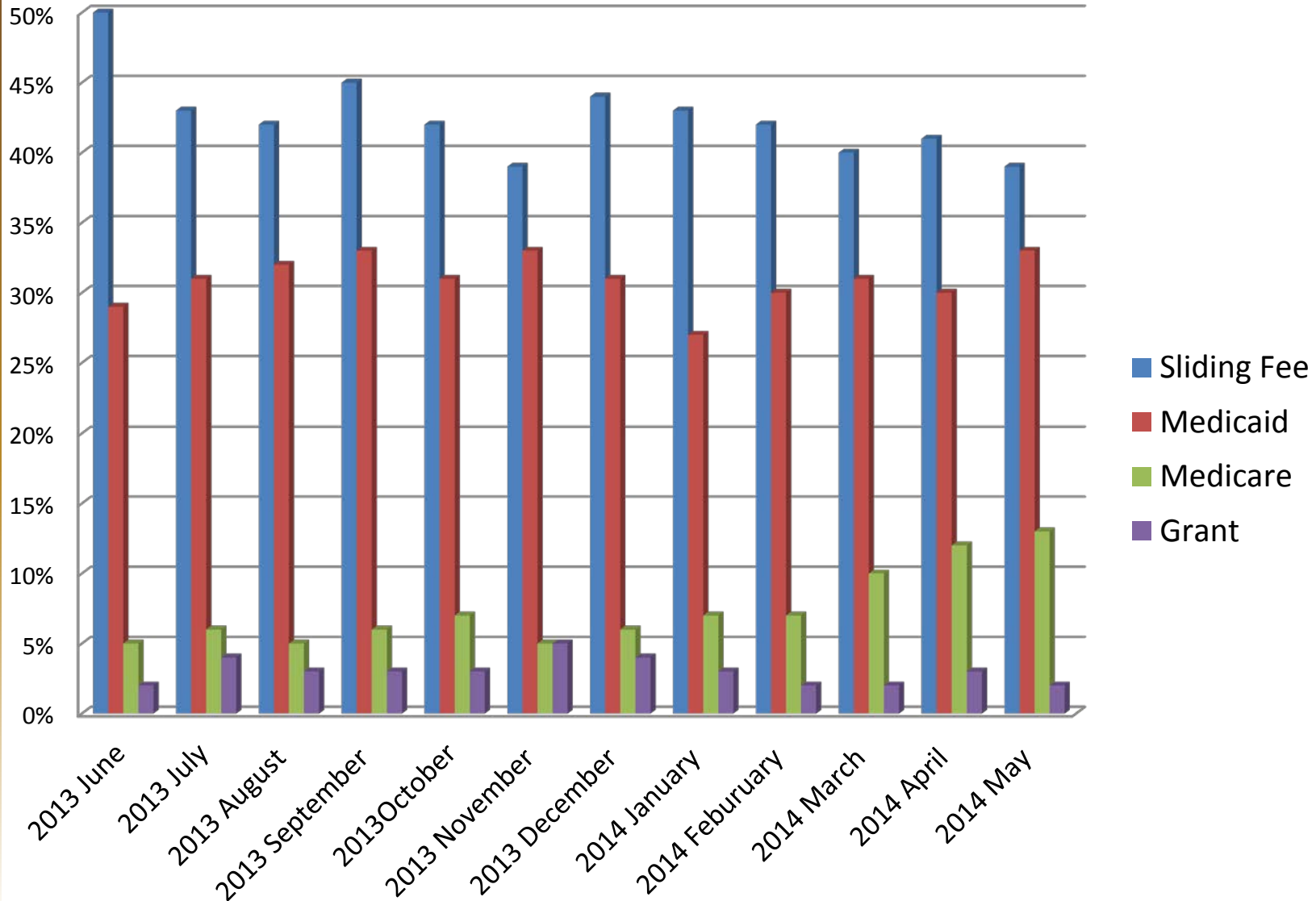
Homeless Payer Mix

- Grant Funding 2013
- Medicaid 2013
- Medicare 2013
- Grant funding 2014
- Medicaid2014
- Medicare 2014





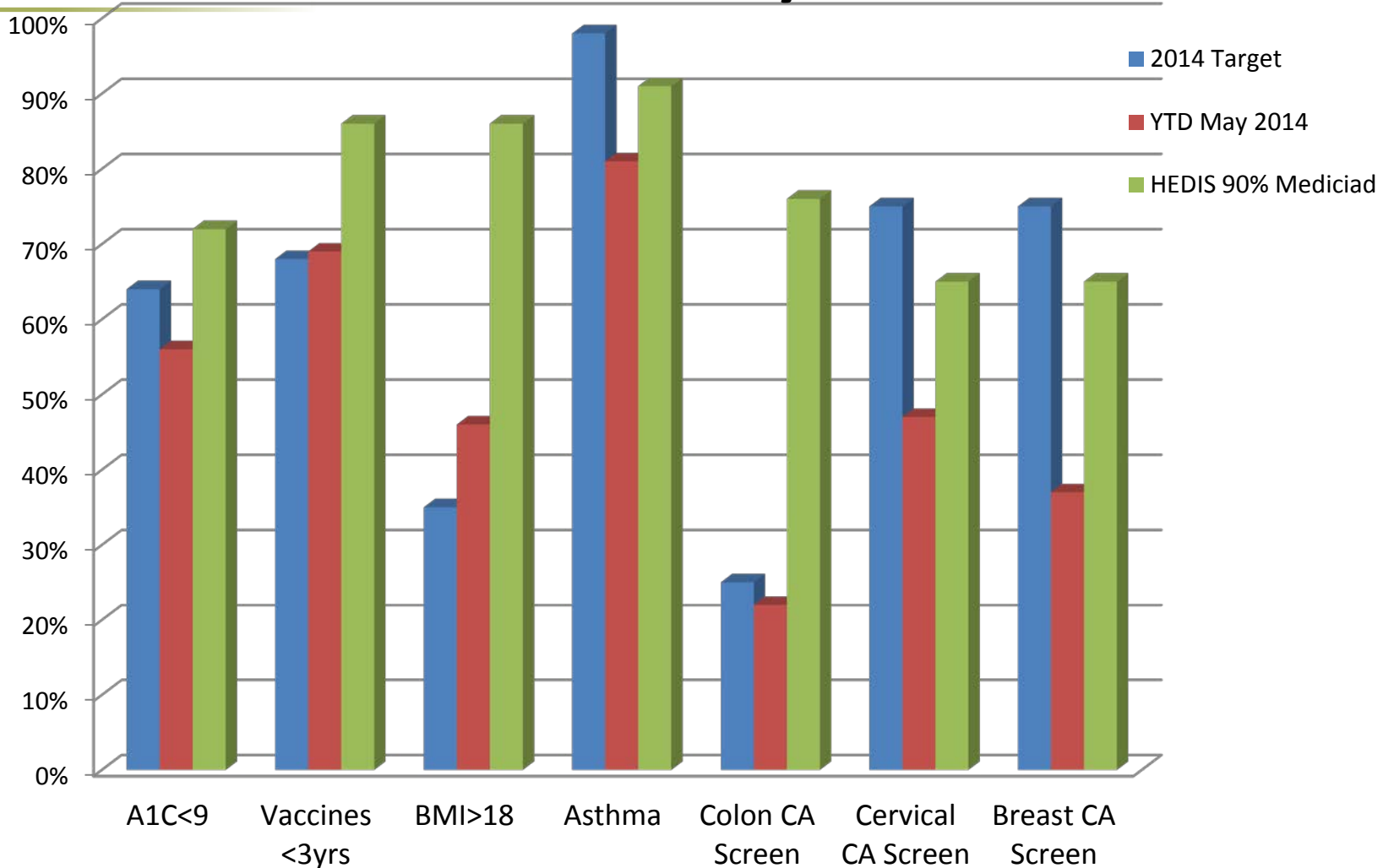
NVHC Payer Mix





NEVADA
HEALTH CENTERS

2014 Health Quality Measures





Our services are available by appointment.

Walk-ins are also accepted.

Please call **1-800-787-2568** or visit

www.NVRHC.org

Hours of Operations

Mon-Fri

8am to 5pm

We also offer a Saturday Clinic at the

Martin Luther King Location

8am to 12pm