

Community Triage Center WestCare Nevada



**Erin Kinard,
Area Director**

UPLIFTING THE HUMAN SPIRIT

Community Triage Center



- Diversion efforts save the community substantial funds by treating individuals in crisis through a non-emergency setting instead of emergency rooms and detention facilities throughout Southern Nevada.
 - ❑ \approx \$150.00 per bed
 - ❑ \approx \$1,500.00 per bed at local hospital
 - ❑ \approx \$141.00 per bed at jails

Community Triage Center

New Facility Update



- 323 N. Maryland Parkway
- Currently remodeling – anticipated date of operation – January 2015
- Facility Capacity of 51 Beds
- Purpose and Function of Current Facility – TBD by Community Needs

Clients Served



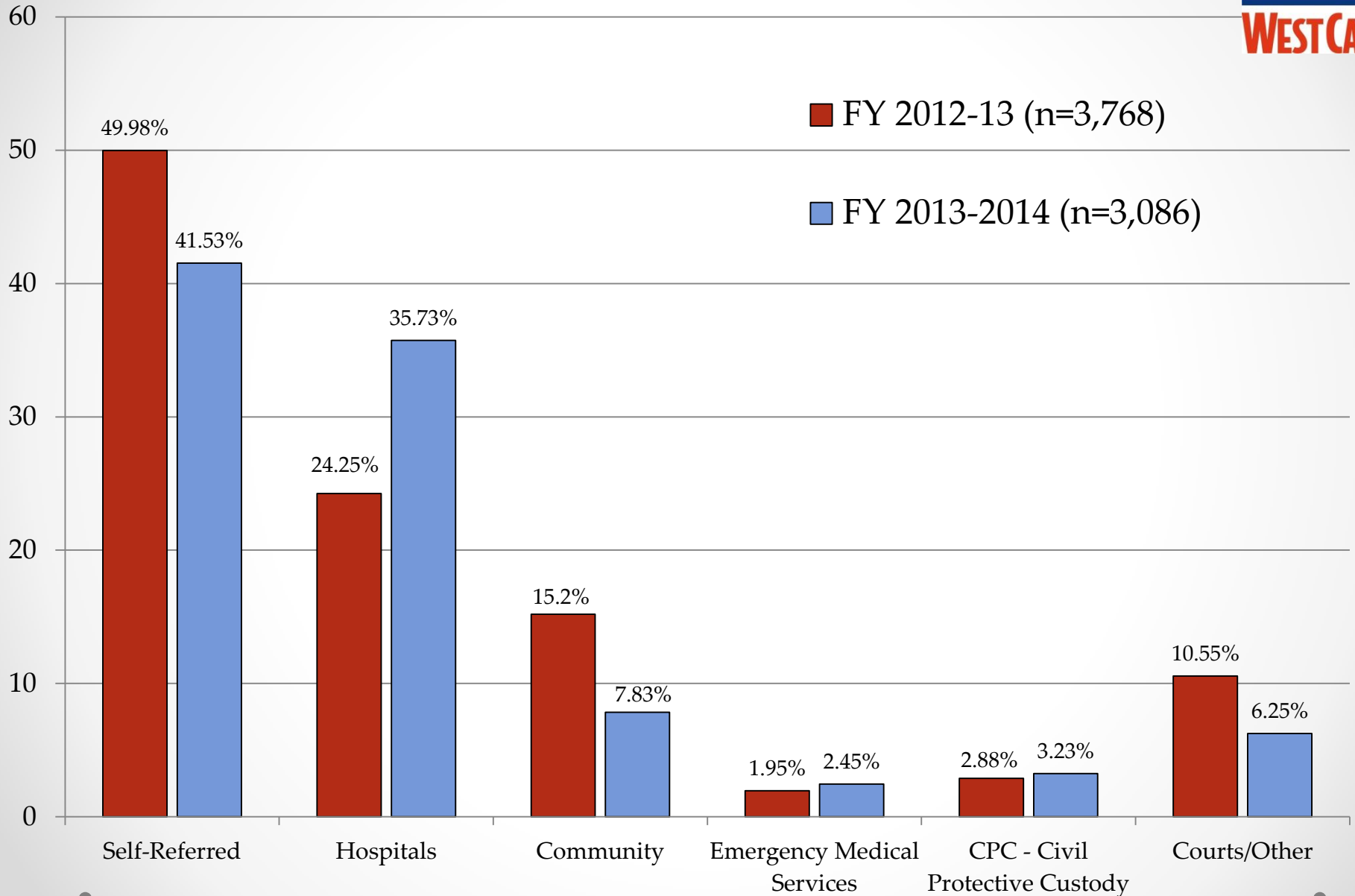
- Total Number of Clients Served -
 - FY 2011-12: **3,524**
 - FY 2012-13: **3,768**
 - FY 2013-14: **3,086**
- Average Length of Stay -
 - FY 2011-12: **2.77 days**
 - FY 2012-13: **3.31 days**
 - FY 2013-14: **3.24 days**

SOCIO-ECONOMIC FACTORS

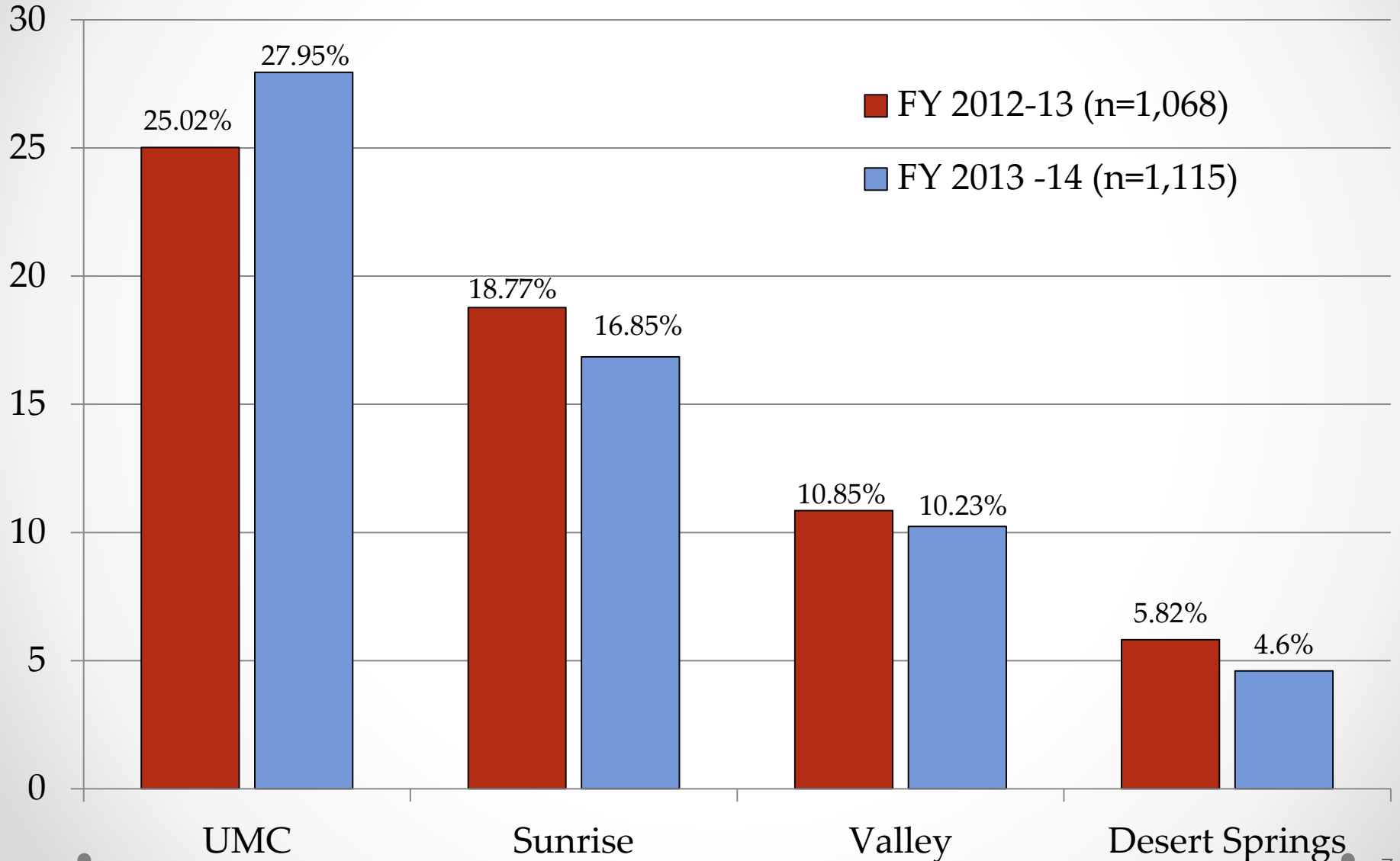


CATEGORY	FY 2012-13 (n= 3,768)	FY 2013-14 (n = 3,086)
Homeless	27.04%	36.91%
Unemployed	89.54%	92.83%
Living Below Federal Poverty Level	89.30%	92.73%

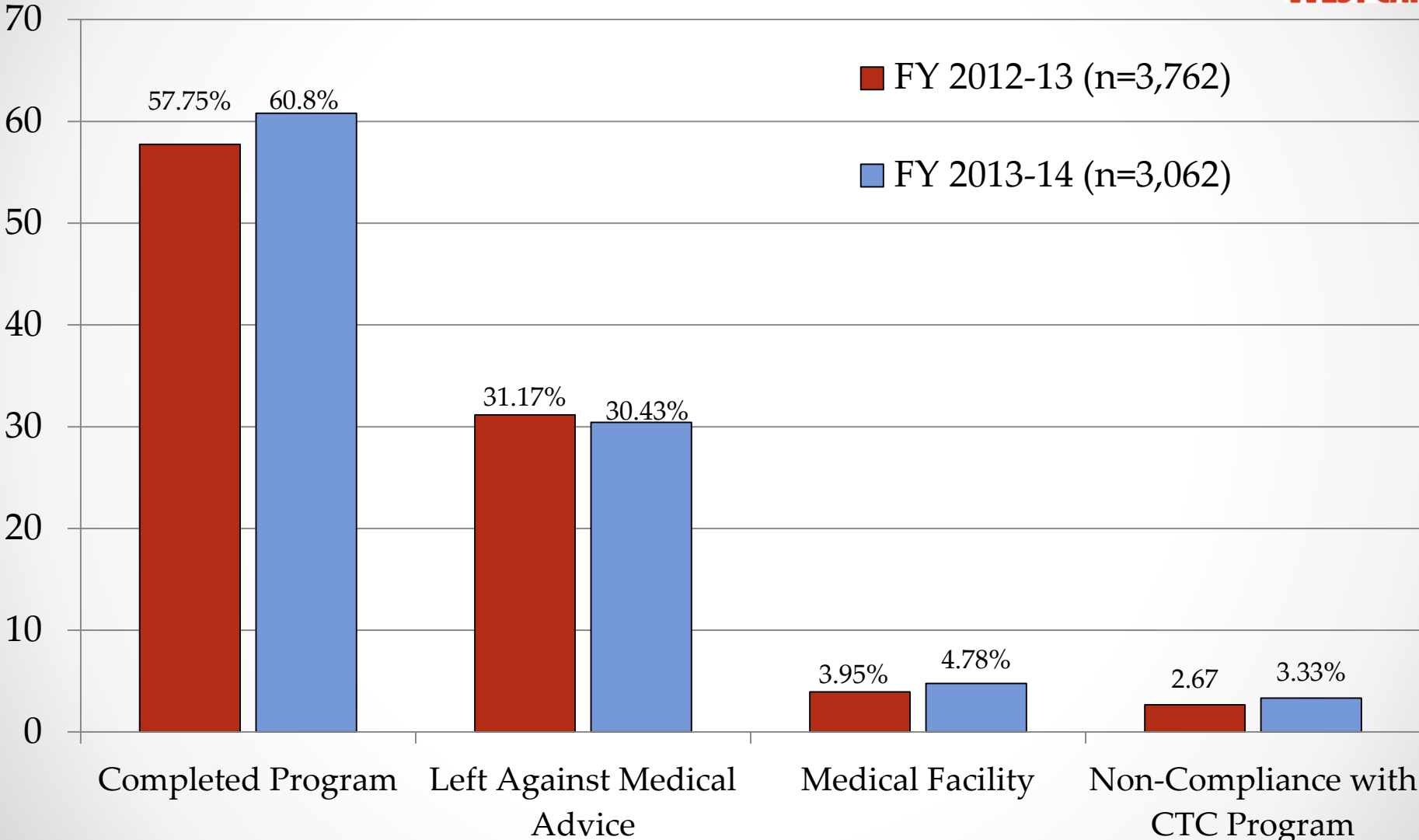
Referral Source



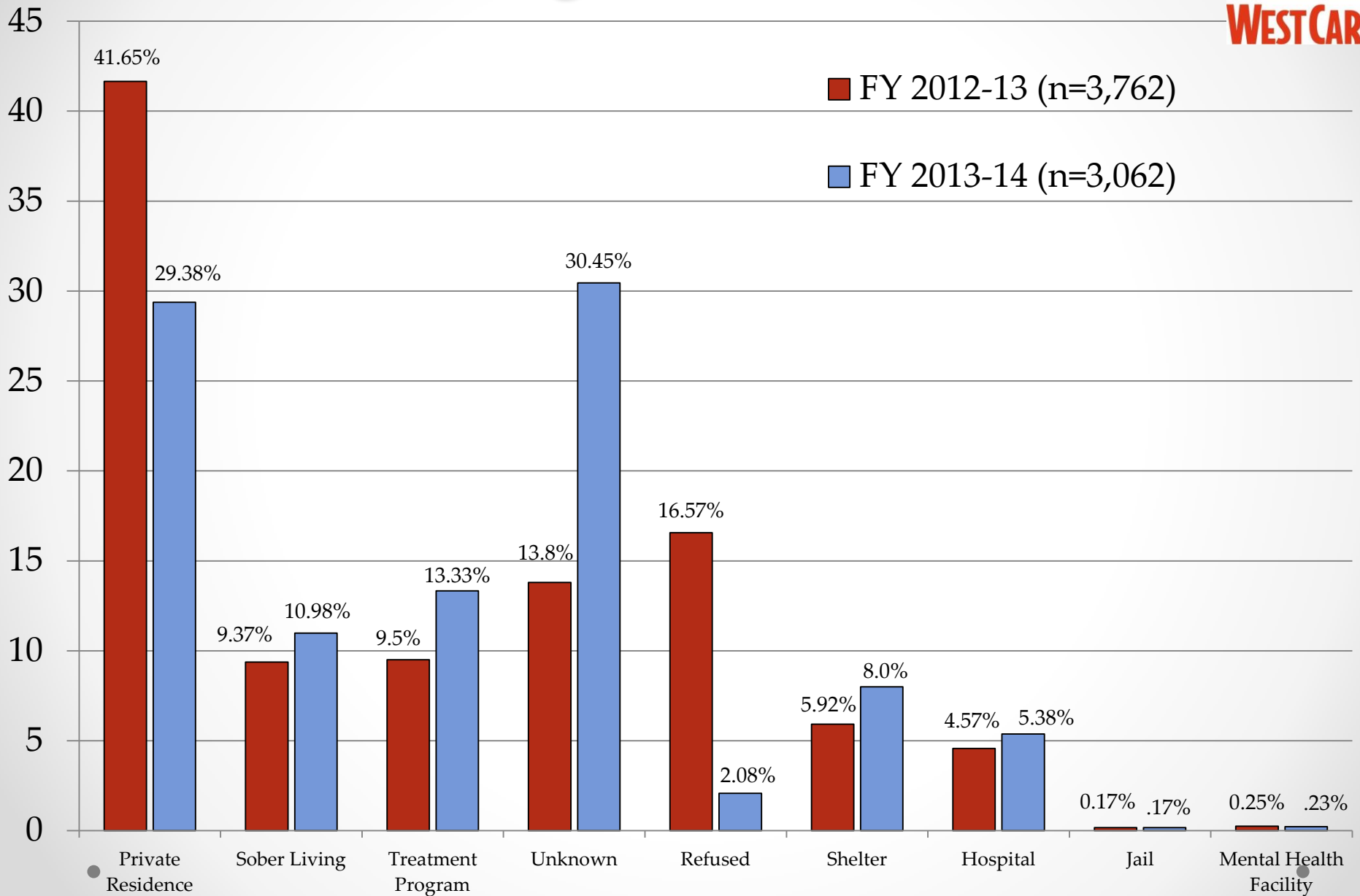
Hospital Referrals



Discharge Reason



Discharge Placements



Mental Health Assessments



- Total Number of Psychiatric Evaluations Completed --
 - FY 2012-13: **264**
 - FY 2013-14: **318**
- Number of Clients Placed on Legal Holds --
 - FY 2012-13: **19**
 - FY 2013-14: **25**
- Number of Duplicated Clients --
 - FY 2012-13: **680**
 - FY 2013-14: **365**

Mental Health Data



AGENCY	FY 2012-13 (n=882)	FY 2013-14 (n=1,038)
SNAMHS	73%	99.04%
“Other”	26%	0%
Montevista	.7%	.19%
Seven Hills	.7%	.58%
Mohave	.1%	.19%

Questions??

**Thank you for your ongoing
support and investment in the WestCare
Community Triage Center**

