



Coordinated Intake Change Advisory Team (CI-CAT) update

Kelly Robson, Chair

1

Short Assessment Triage Tool (SATT)

- Compliance with HUD—"No Wrong Door"
- Assessment completed at HUB or referred to another HUB—dependent on answers
- Identifying sub-population characteristics
- Immediate Safety Needs
- Medical attention
- Interested in Shelter
- Where slept previous night



2

Updates

- Sub-pops
 - Youth
 - Survivors of Domestic Violence
 - Families
- Clean-up of the queue
 - Ensuring all persons on the queue have a CHAT



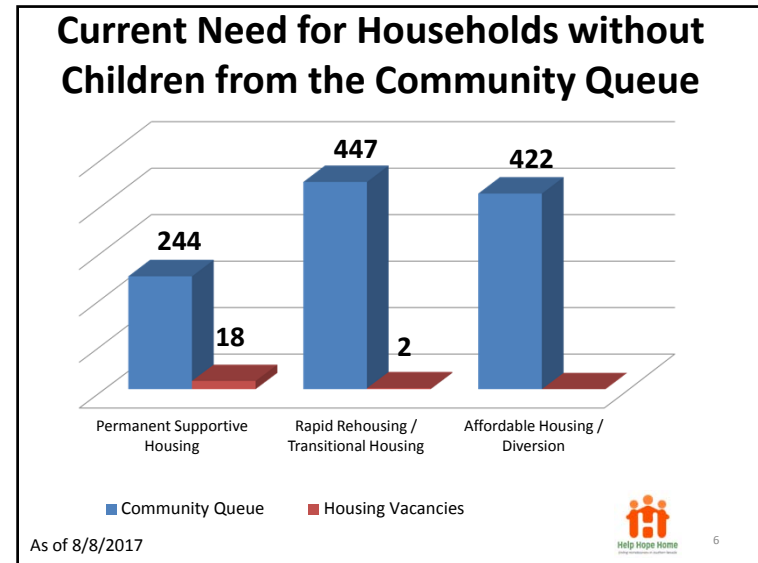
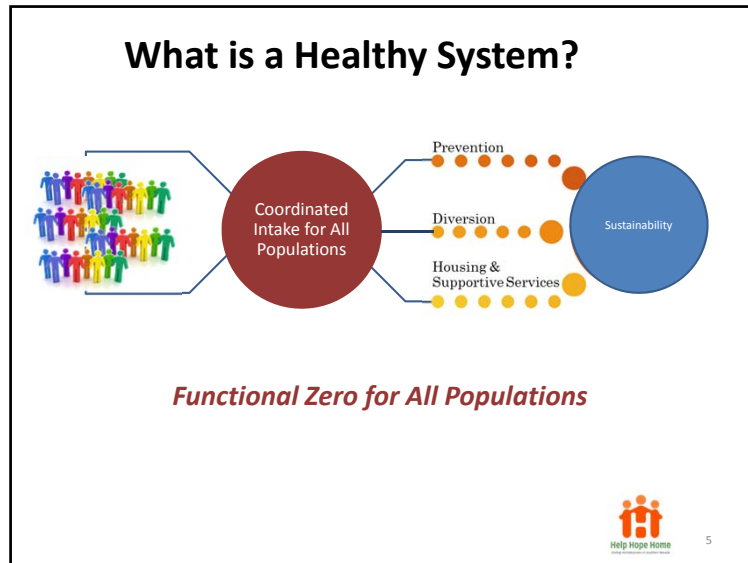
3

Policy and Procedure Update

- Sub-group meets bi-weekly
- next CoC Board meeting will bring the Draft with:
 - areas that we need assistance in gathering information
 - areas identified that need developed within our system



4



- ### Next Steps
- Complete the Development of a Community Housing Assessment User Agreement
 - Train all assessors on each of the tools
 - Schedule the trainings
 - Continue to clean-up the queue
 - Soft roll-out beginning September 2017.
- 7