



Brooke Page

Assistant Manager, Clark County Social Service
Brooke.Page@clarkcountynv.gov
(702) 455-3704

Introduction:

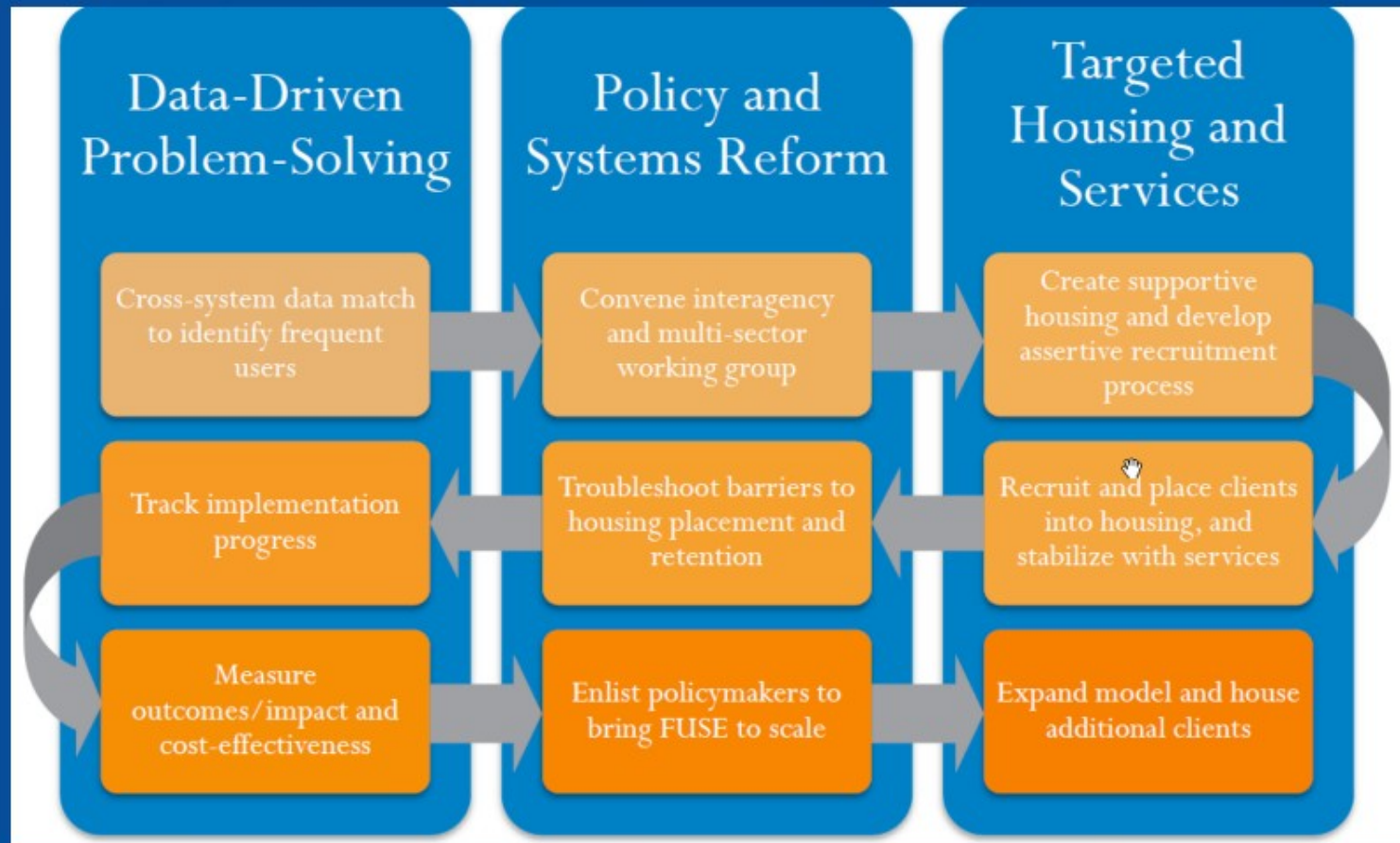
An overview of the ClarkCountyFUSE (Frequent User System's Engagement)

- The Issue of Frequent Use
- CSH's FUSE Framework
- Southern Nevada's FUSE
- ClarkCountyFUSE PSH

The Issue:

San Diego's FUSE





CSH's FUSE Framework:

Data-Driven Problem-Solving


Cross-system data match
to identify frequent
users



1 Conduct Cross-System Data Match to Identify Frequent User Cohort

Match administrative data across corrections, homeless services and other crisis public services to develop a list of shared clients who meet specified thresholds of high service use (e.g. 4 jail and 4 shelter admissions in last 3 years).

Policy and Systems Reform



Convene interagency
and multi-sector
working group

2 Convene Stakeholders & Create Interagency, Multi-Sector Working Group

Convene key public agencies, policymakers, and community stakeholders into a working group to help adapt the model, assemble resources, track and troubleshoot process, oversee outcomes, and advocate for the expansion of the model.

Targeted Housing and Services

Create supportive housing and develop assertive recruitment process

3 Design and Assemble Resources for Supportive Housing and Assertive Recruitment through In-Reach into Jails, Shelters and Other Services

Work with partners to design the intervention—supportive housing coupled with assertive client engagement and recruitment through in-reach into jails, shelters, and other settings—assemble the resources needed for the intervention (e.g. rent subsidies, unit set-asides, services funding), and select participating providers.

Data-Driven Problem-Solving

4

Recruit and Place Clients into Housing and Stabilize with Services

Work with and train selected supportive housing providers to proactively recruit frequent user clients from the data-generated list by conducting in-reach into jails, shelters, and other crisis service settings. Providers engage and build motivation among clients and place them into supportive housing rapidly. Once placed, clients are assisted in developing and meeting service goals to increase housing stability and prevent returns to jails, shelters, and other services.

Track implementation
progress

Policy and Systems Reform

5

Troubleshoot Barriers to Facilitate Housing Placement and Retention

Through routine oversight meetings, the working group reviews and troubleshoots barriers to housing placement and retention, especially barriers that stem from bureaucratic approval processes.

Troubleshoot barriers to
housing placement and
retention

Targeted Housing and Services

Create supportive

6 Track Recruitments, Placements and Avoidance of Crisis Services

Systems and procedures are created to conduct real-time tracking of client recruitment, housing placement, and client use/avoidance of jail, shelter, and other services.

Recruit and place clients
into housing, and
stabilize with services

Data-Driven Problem-Solving

Cross-system data match
to identify frequent
users

7

Measure Reductions in Crisis Services and Cost-Effectiveness of Model

Outcomes and impact are measured either through a formal evaluation or informal outcomes tracking process, which measures reductions in jail, shelter and other crisis services used and attendant cost offsets. These cost offsets are compared against the cost of supportive housing.

Measure
outcomes/impact and
cost-effectiveness

Policy and Systems Reform

Convene interagency and multi-sector working group

8 Enlist Policymakers to Bring FUSE to Scale

Based upon the success of the model in reducing crisis services use and costs, the working group engages key policymakers to commit additional resources to bring the model to full scale, that is, enough units to reach the full set of individuals identified in the data match.

Enlist policymakers to bring FUSE to scale

9

Expand the Model, Participating Providers and House New Clients

With newly committed resources, expand capacity of current providers and recruit and train new providers to recruit and house new frequent user clients.

Targeted Housing and Services

Create supportive housing and develop assertive recruitment process

Expand model and house additional clients

ClarkCountyFUSE Purpose

- **Clark County Detention Center is Overcrowded**
- **Clark County Lacks a Cross-Sector Communication Mechanism/ Data Sharing MOU**
- **Convene the Criminal Justice System and the Continuum of Care to Address Frequent Users**
- **Develop a Supportive Housing Plan for Frequent Users of the Criminal Justice System**



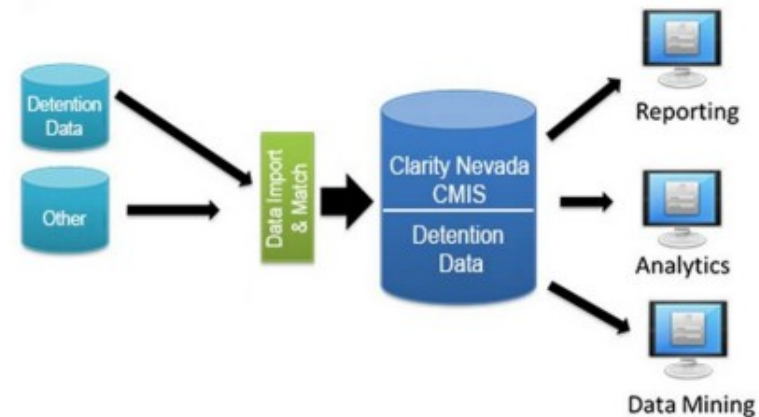
Data-Driven Problem-Solving

Cross-system data match
to identify frequent
users

- ✓ CCDC
- ? Henderson
- ? CLV
- ? NLV
- ? Courts

- Data Use Agreement
- CC, CCDC, Bitfocus
- Consent Signed

Data Partitioning Model



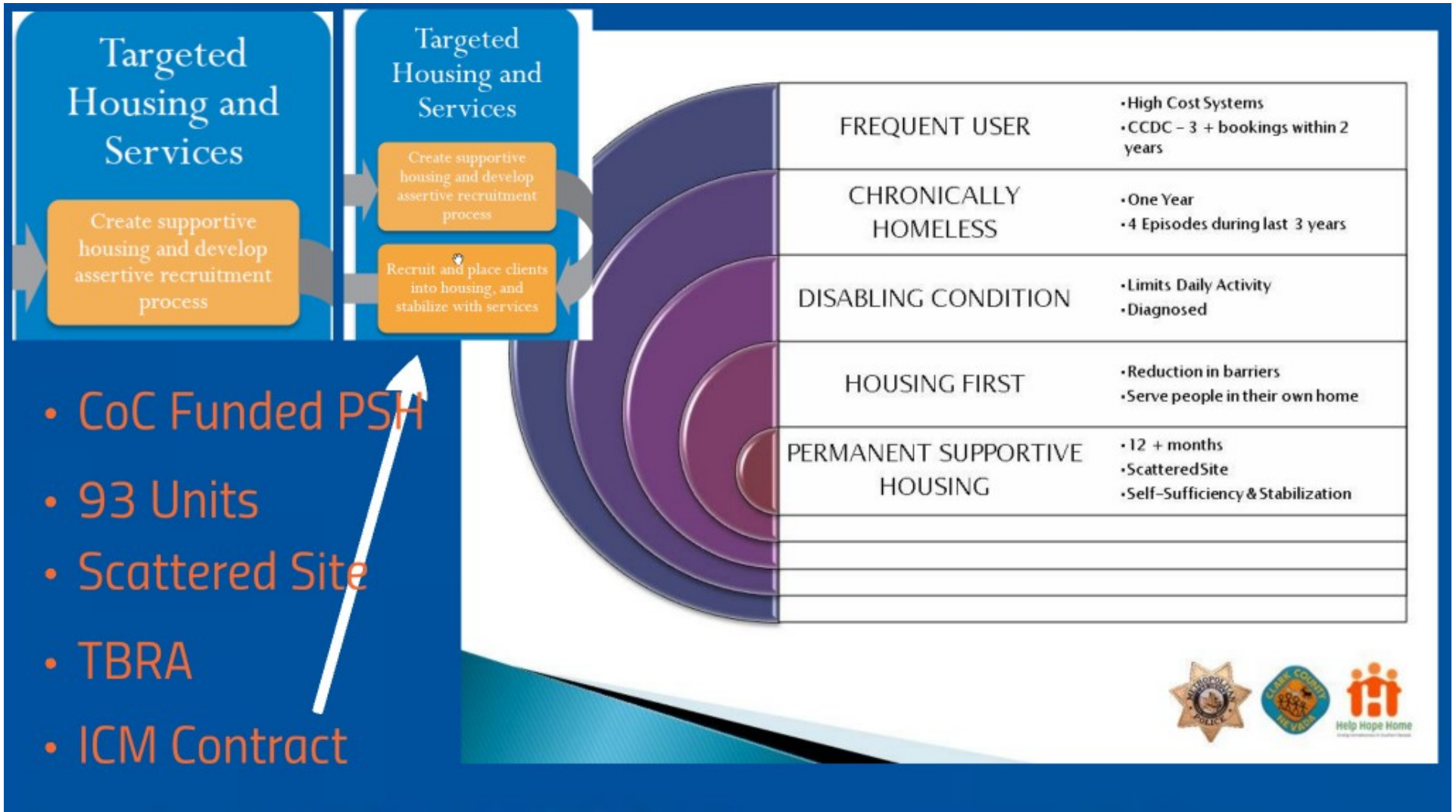
Frequent Users Use ALL the Systems Stakeholders Include:



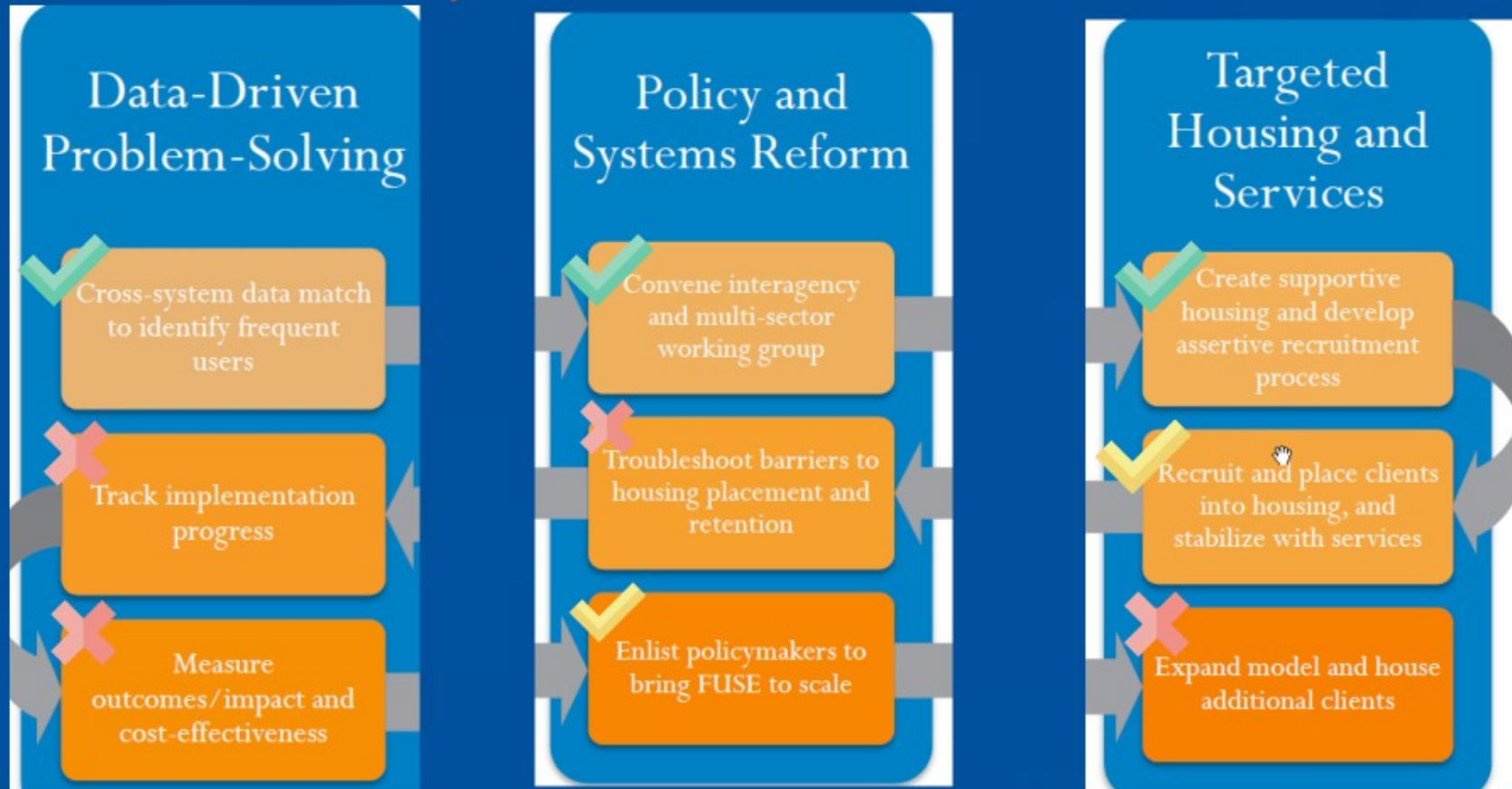
Policy and Systems Reform

Convene interagency
and multi-sector
working group

- 2016 Larger Working Group - All Systems
- 2017 CCDC - PSH Implementation
- Fall 2017 - Reconvene All Systems



Processes Underway:





Questions?

