

# Corridor of Hope The COURTYARD

Status Update

March 2018

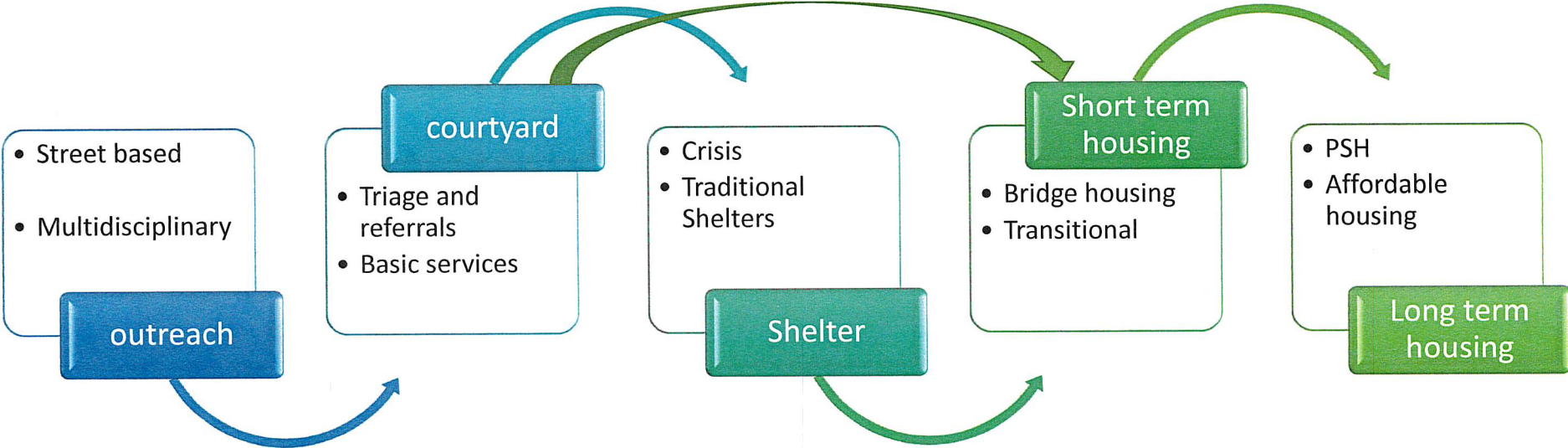


Submitted at City Council

Date                      Item 40

3/7/18

# Continuum of Interventions

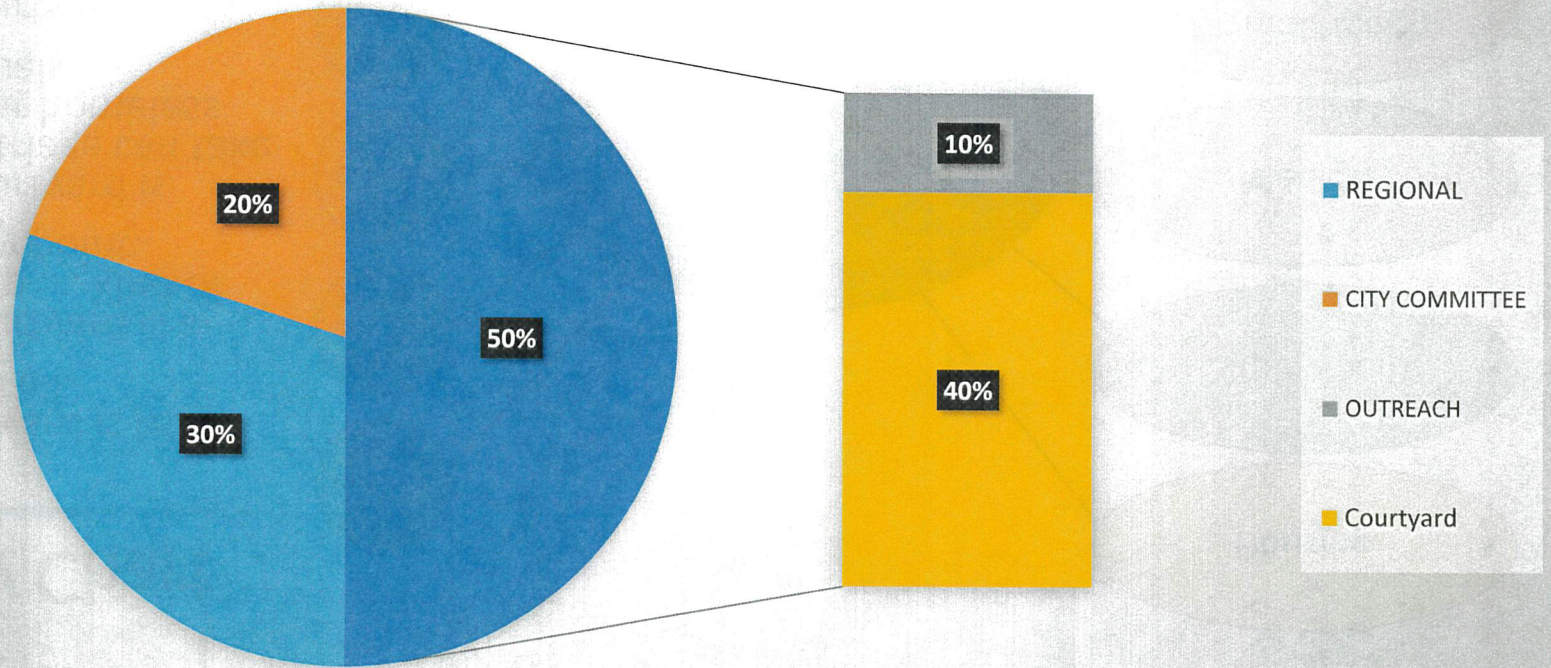






# Continuum of Interventions

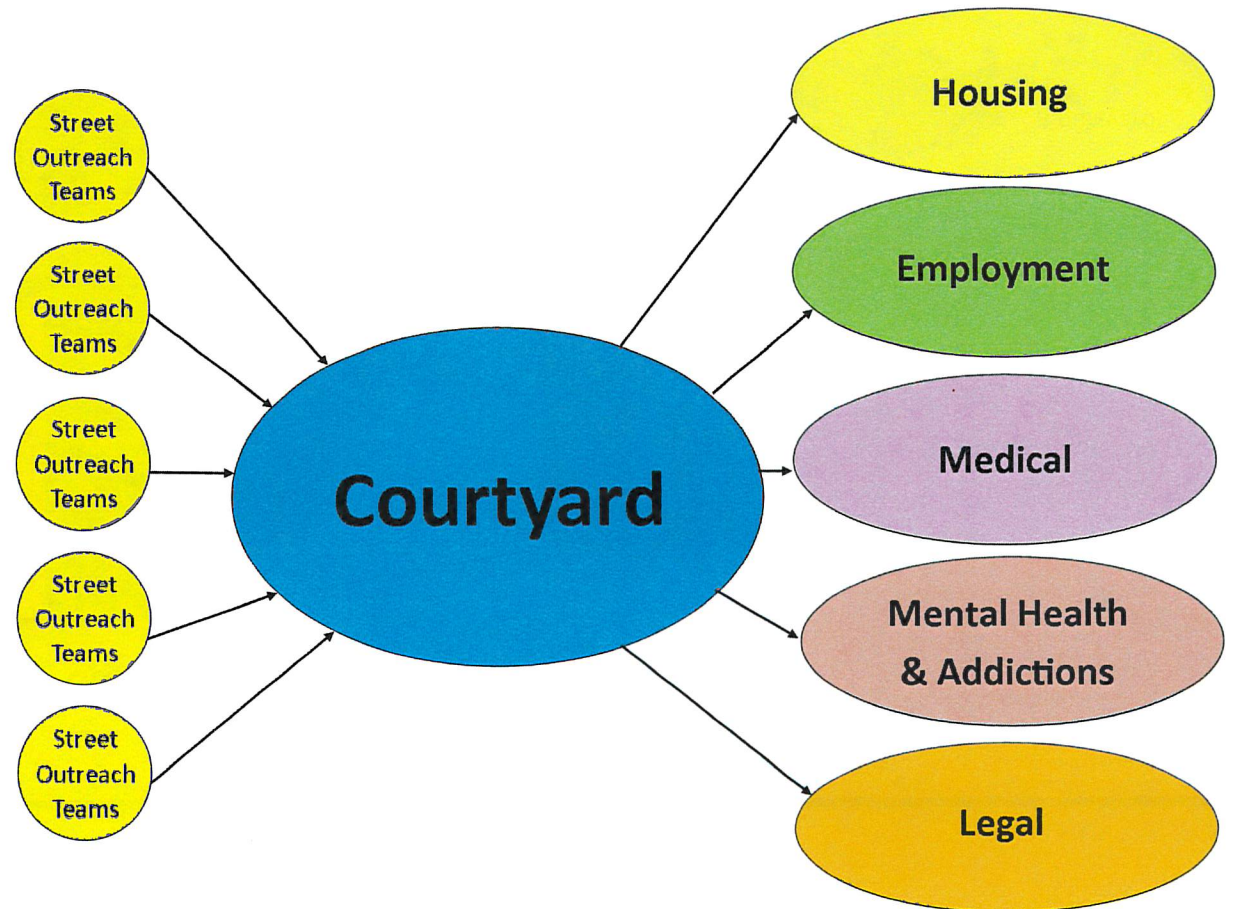
Current Homeless Interventions





## Flow Chart

- A courtyard is NOT the end all.
- The courtyard is a first step .... kind of an entry point.
- The courtyard is where triage can take place for homeless individuals.
- The courtyard leads to additional resources and services, with the ultimate goal to stabilize an individual







# Corridor of Hope Las Vegas, Nevada



**CORRIDOR OF HOPE  
2017**



Source: Office of Community Services





# Pop-Up Services

## Low Barrier Day Center

- 24/7 Security
- Porta Potties
- Housing Assessments
- Medical and Dental Treatment
- Document Retrieval Assistance
- Job Fairs
- Mobile Shower Unit
- Mail Service
- Ticket to Home Program
- Services and support from various nonprofit partners
- Bridge Housing
- Public phone and computers
- Hydration and respite







# Corridor of Hope (Las Vegas, Nevada)

## COURTYARD

---

### Start Up (Phase I):

**Timeframe:** Target Open Date – May 1, 2018

**Capacity:** 250 to 300 individuals

**Security:** 6 armed officers

#### Core services:

- Dayroom room
- Shade structures
- Porta potties
- Mobile Shower Trailer (once a week)
- Storage locker / containers
- Sleeping mats
- Navigation Services
- Outdoor furniture (benches, picnic tables, chairs, etc.)
- Mobile Services (related to health, grooming services, etc.)
- Water Stations
- Fans / Heaters
- Mail Window
- 1 Outreach Team (Downtown Area)
- Coordinated Intake Location



# Corridor of Hope (Las Vegas, Nevada)

## COURTYARD

---

### Build Out (Phase 2):

**Timeframe:** Fall 2019

**Capacity:** 500 to 800 individuals

**Security:** 8 armed officers

**Staffing:** 21 staff of nonprofit homeless agencies

**Services:** All items listed in the Start UP phase plus the following...

- Multi Purpose Room
- Resource Room
- Warming Kitchen
- Toilet Facilities
- Shower Facilities
- Laundry Facilities
- Mailboxes
- Medical Respite
- Resource Room
- Classrooms (Job Fairs, Health and Wellness)
- Wet Shelter Module / Unit
- Mental Health Module / Unit
- Legal Assistance Module / Unit
- Turn Out for Mobile Services (medical, dental, etc.)
- Pet Kennel
- 2 or 3 additional Outreach Teams





# Corridor of Hope (Las Vegas, Nevada)

## COURTYARD

REVENUE	FY 2017-2018			TOTAL	FY 2018-2019			TOTAL	FY 2019-2020			TOTAL
	CDBG	RDA	GENERAL FUND		CDBG	RDA	GENERAL FUND		CDBG	RDA	GENERAL FUND	
TOTAL REVENUE	\$5,000,000	\$2,320,000	\$260,000	\$7,580,000	\$3,200,000	\$1,300,000	\$1,315,000	\$5,815,000	\$3,200,000	\$1,300,000	\$1,260,000	\$5,760,000
BOND REVENUE	\$400,000			\$400,000	\$10,000,000			\$10,000,000	\$0			\$0
PRIOR YEAR CARRYOVER					\$4,650,000	\$706,000	\$800	\$5,356,800	\$8,620,000			\$8,620,000
<b>STAFFING (LABOR)</b>												
TOTAL	\$0	\$785,000	\$0	\$785,000	\$0	\$1,666,400	\$400,000	\$2,066,400	\$0	\$2,001,056	\$685,000	\$2,686,056
<b>CONTRACTS</b>												
TOTAL	\$0	\$826,100	\$35,000	\$861,100	\$0	\$509,500	\$1,000,000	\$1,509,500	\$0	\$512,500	\$651,200	\$1,163,700
<b>DISCRETIONARY</b>												
TOTAL	\$0	\$2,900	\$224,200	\$227,100	\$30,000	\$88,000	\$65,000	\$183,000	\$30,000	\$88,000	\$65,000	\$183,000
<b>CONSTRUCTION/CIP</b>												
TOTAL	\$500,000	\$0	\$0	\$500,000	\$9,200,000	\$0	\$0	\$9,200,000	\$11,200,000	\$0	\$0	\$11,200,000
<b>OTHER</b>												
TOTAL	\$0	\$0	\$0	\$0	\$0	\$0	\$55,000	\$55,000	\$0	\$55,000	\$0	\$55,000
<b>TOTAL REVENUE BY FY</b>	\$5,400,000	\$2,320,000	\$260,000	\$7,980,000	\$17,850,000	\$2,006,000	\$1,315,800	\$21,171,800	\$11,820,000	\$1,300,000	\$1,260,000	\$14,380,000
<b>TOTAL EXPENSES BY FY</b>	\$500,000	\$1,614,000	\$259,200	\$2,373,200	\$9,230,000	\$2,263,900	\$1,520,000	\$13,013,900	\$11,230,000	\$2,656,556	\$1,401,200	\$15,287,756
<b>SHORTFALL/OVERAGE</b>	\$4,900,000	\$706,000	\$800	\$5,606,800	\$8,620,000	-\$257,900	-\$204,200	\$8,157,900	\$590,000	-\$1,356,556	-\$141,200	-\$907,756



# Pop-Up Services

---

## Impact

- 1,290 unduplicated clients
- 4,417 requests for services

## Services

- Ticket to Home – 1,160
- Medical/Mental Health – 536
- Benefits Assistance – 191
- Housing Assistance – 101
- Document Retrieval – 128
- Employment Assistance - 70





# Pop-Up Services

---

## Community Partners

- Agencies Advanced Personnel
- Alcoholics Anonymous
- Anthem Blue Cross
- Catholic Charities
- CLV Public Safety
- Clean the World
- Combs Brothers, LLC
- Desert Rose Counseling Group
- Family Promise
- Health Plan of Nevada
- HELP of Southern Nevada
- HOPE Christian Health Center
- Las Vegas Fire & Rescue
- Las Vegas Rescue Mission
- LVMPD
- Lutheran Social Services
- Nevada Homeless Alliance
- Nevada State Welfare Division
- Siegel Suites
- Silver State Health Services
- SNHD AIDS Van / Trac B
- Social Security Administration
- Straight from the Streets
- The Salvation Army
- Urban Underdogs
- US Vets
- Well Care
- WestCare
- Workforce Connections
- Veterans Administration



## Employment

---

### **Clean the World**

- 3 clients offered full-time employment

### **World Market Center** (temporary employment)

- 148 people hired

### **Combs Brothers LLC** (temporary employment)

- 216 people hired
- 4 People hired full time

### **Workforce Connections / HELP of Southern Nevada**

- Job assessments and training and employment opportunities
- 3 times each month





# The MORE Project

---

## Homeless Outreach Team:

- One Lieutenant (part-time)
- Two LVMPD Officers
- Two CLV Marshals (part-time)
- 4 Case Management & Outreach Workers:
  - HELP of Southern Nevada
  - U.S. Vets
  - The Salvation Army
  - WestCare
- 2 Formerly Homeless Navigators from Teen Challenge



# The MORE Project

---

## Impact

- 3,883 contacts
- 1299 encampments removed
- 2,064 accepting services
- 140 people removed from homelessness
- 18 arrests
- 52 citations





# Barriers Identified During Pilot Phase

---

- HUD funding limitations
- Limited housing resources
- Transportation
- Shelters for families / women with children
- Medical respite lacking



# Corridor of Hope (Las Vegas, Nevada)

## COURTYARD

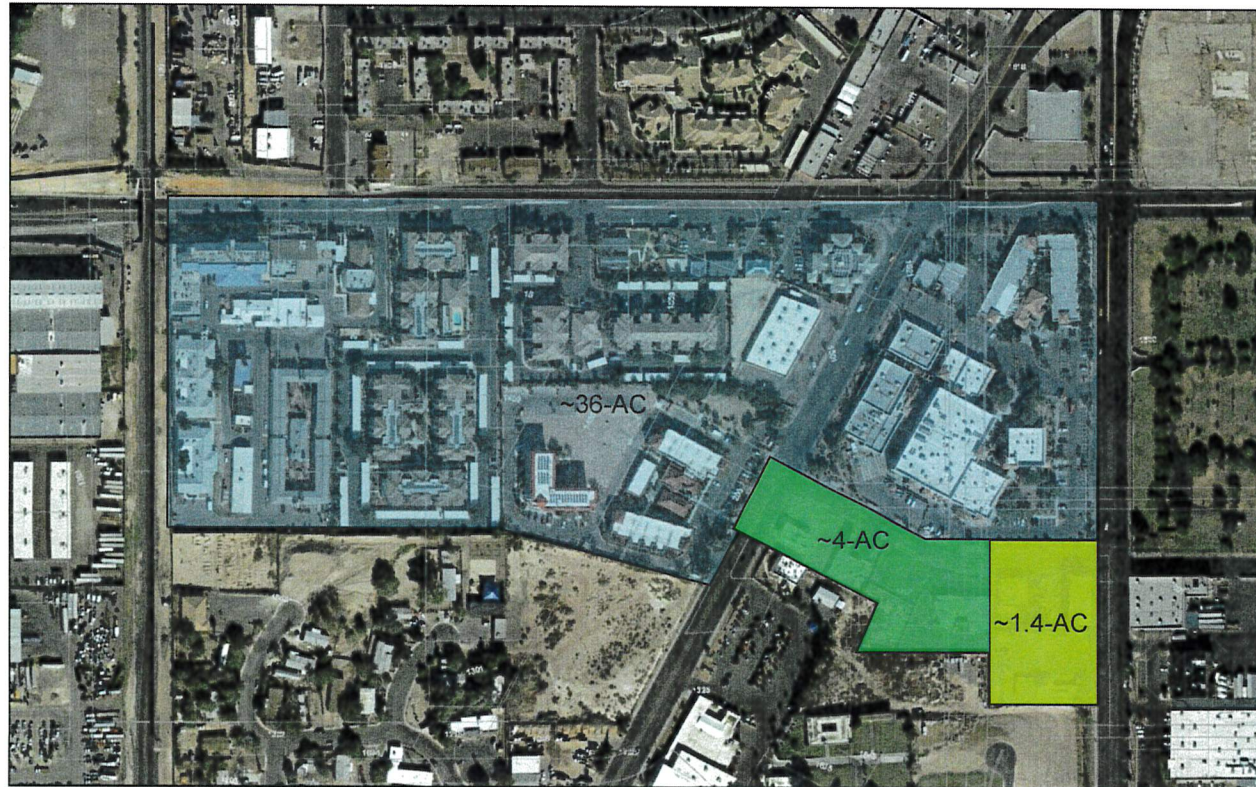
---

- This Courtyard facility is “sized” to support homeless individuals within the Downtown, Medical District and adjacent downtown neighborhoods.
- The Courtyard Model will serve as a prototype that could easily be scaled and replicated in other parts of Southern Nevada.

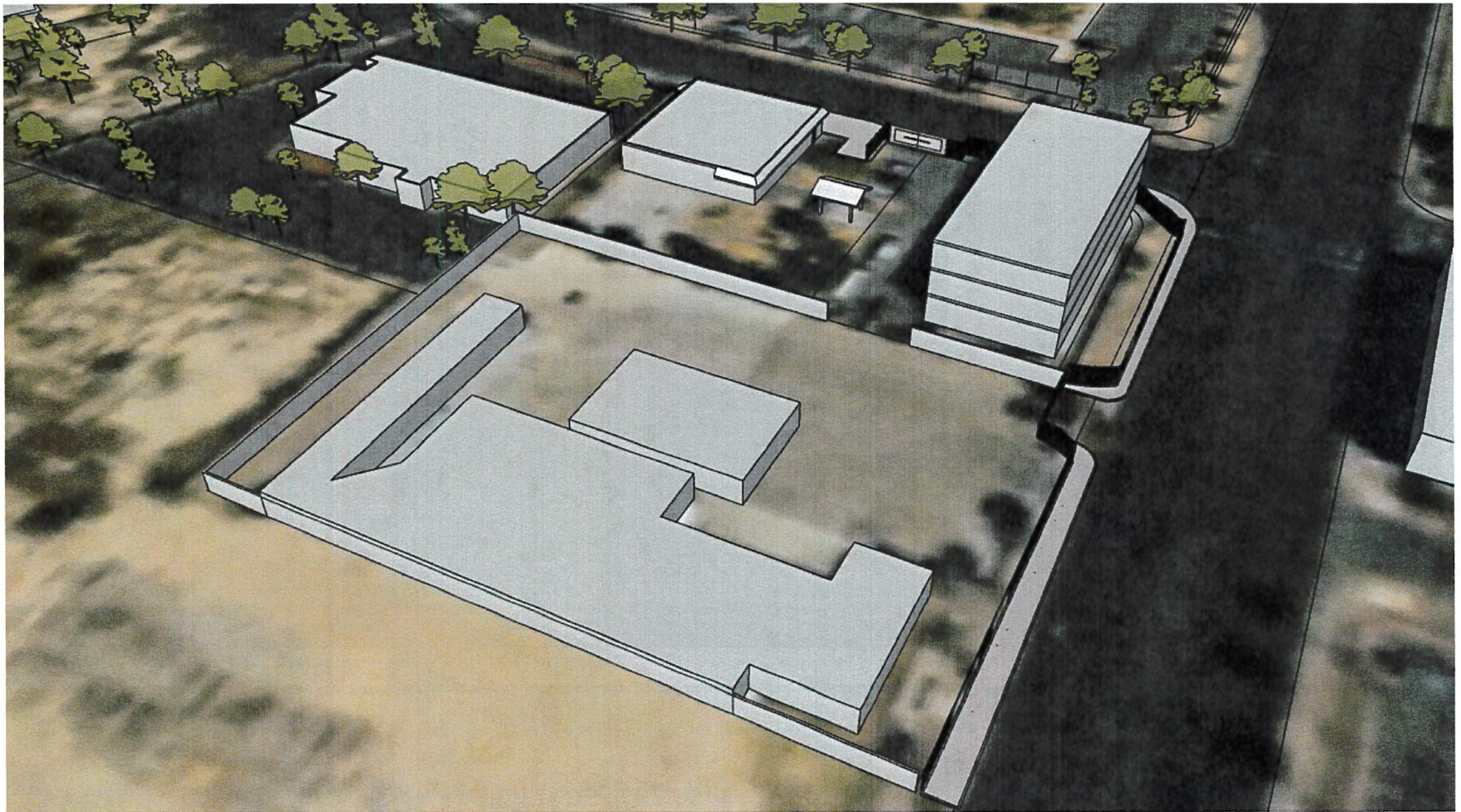




# Corridor of Hope (Las Vegas, Nevada) COURTYARD



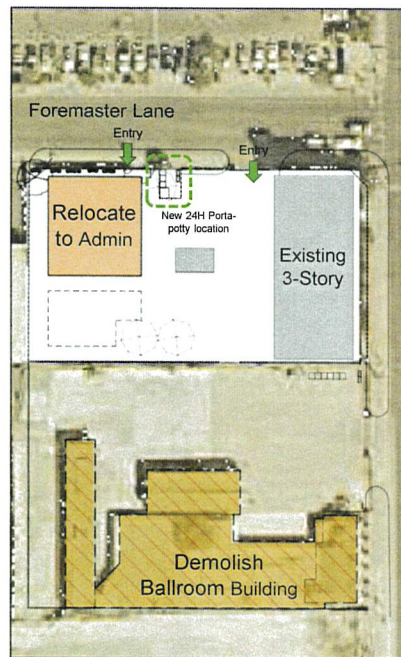




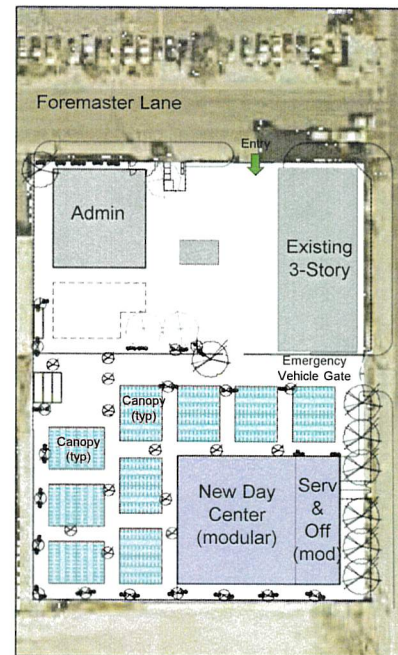




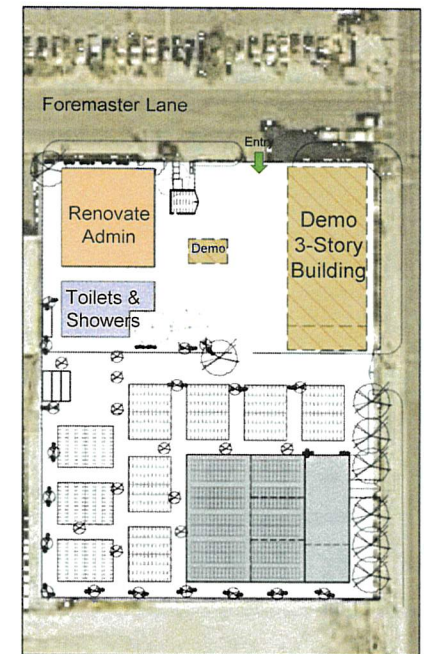
# Corridor of Hope (Las Vegas, Nevada) COURTYARD



- Relocate from Ballroom to Shannon West
- Begin 24/7 Services
- Demolish Ballroom Buildings, move trailer, & prepare site



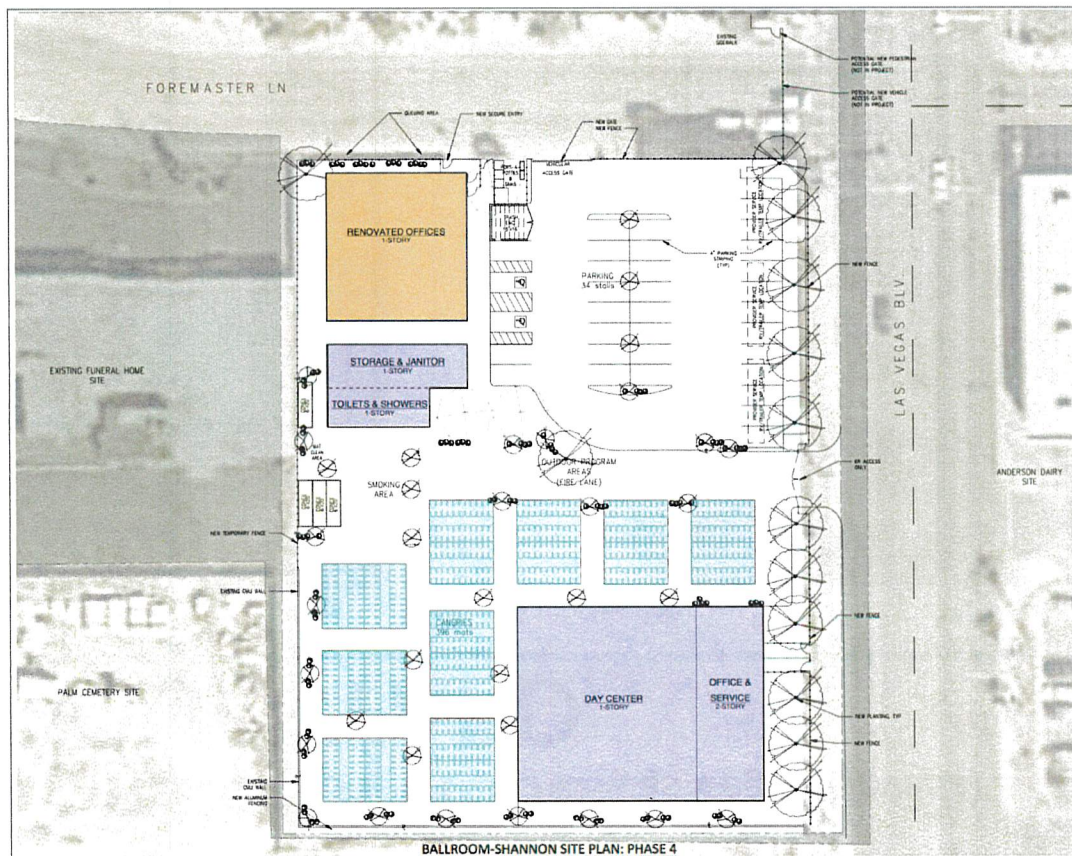
- Build New Canopies
- Install New Modular Buildings
- Install New Secure Fence
- Install New Landscaping



- Relocate to Ballroom Site
- Demolish Shannon West 3-Story Building & Canopy
- Build New Shower & Toilet Building
- Renovate Admin Building



# Corridor of Hope (Las Vegas, Nevada) COURTYARD



- Install Parking & Landscaping at Shannon West
- Install New Fence & Access Gate at Foremaster Lane
- Demolish Existing Fence between Sites





# Corridor of Hope (Las Vegas, Nevada)

## COURTYARD

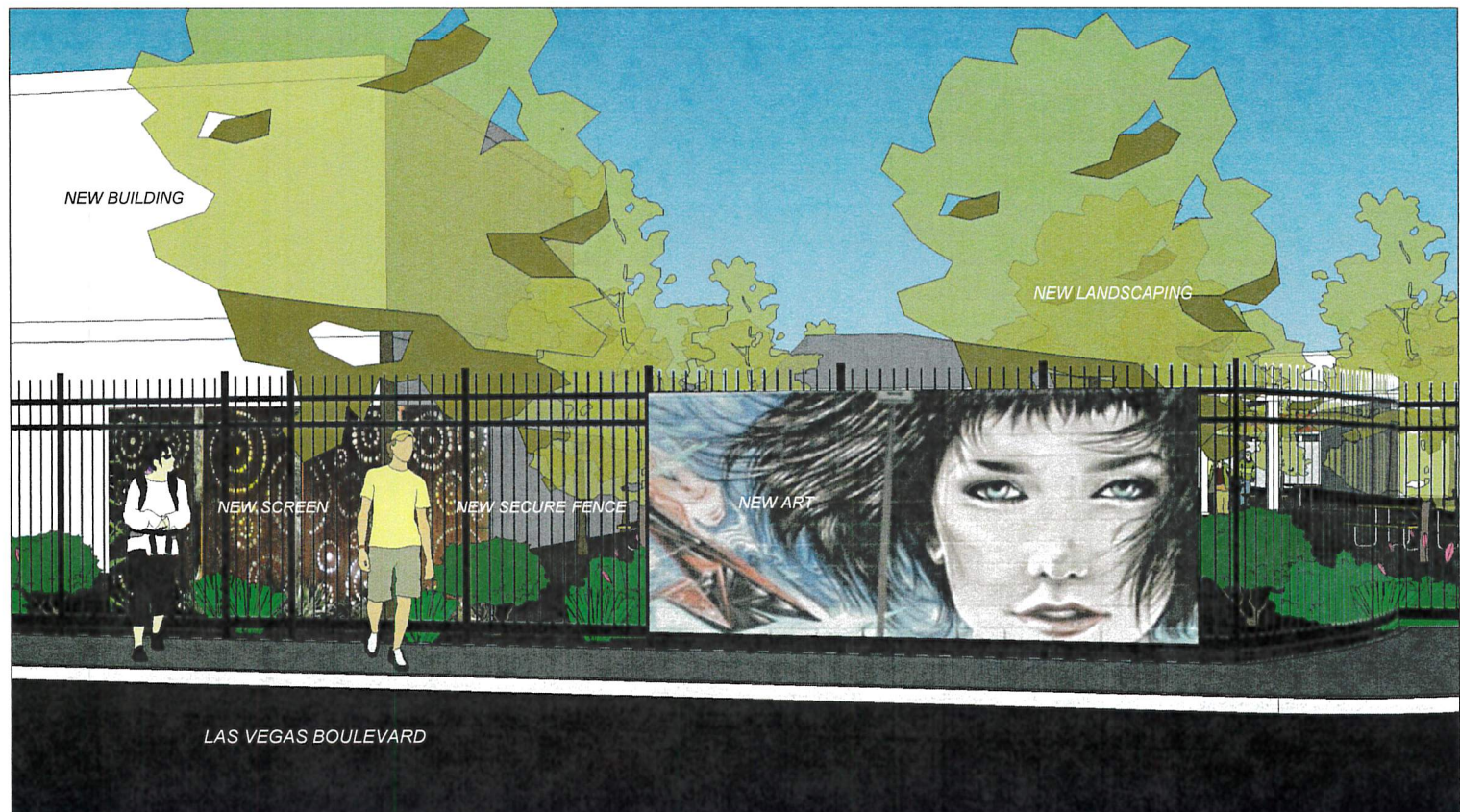
---







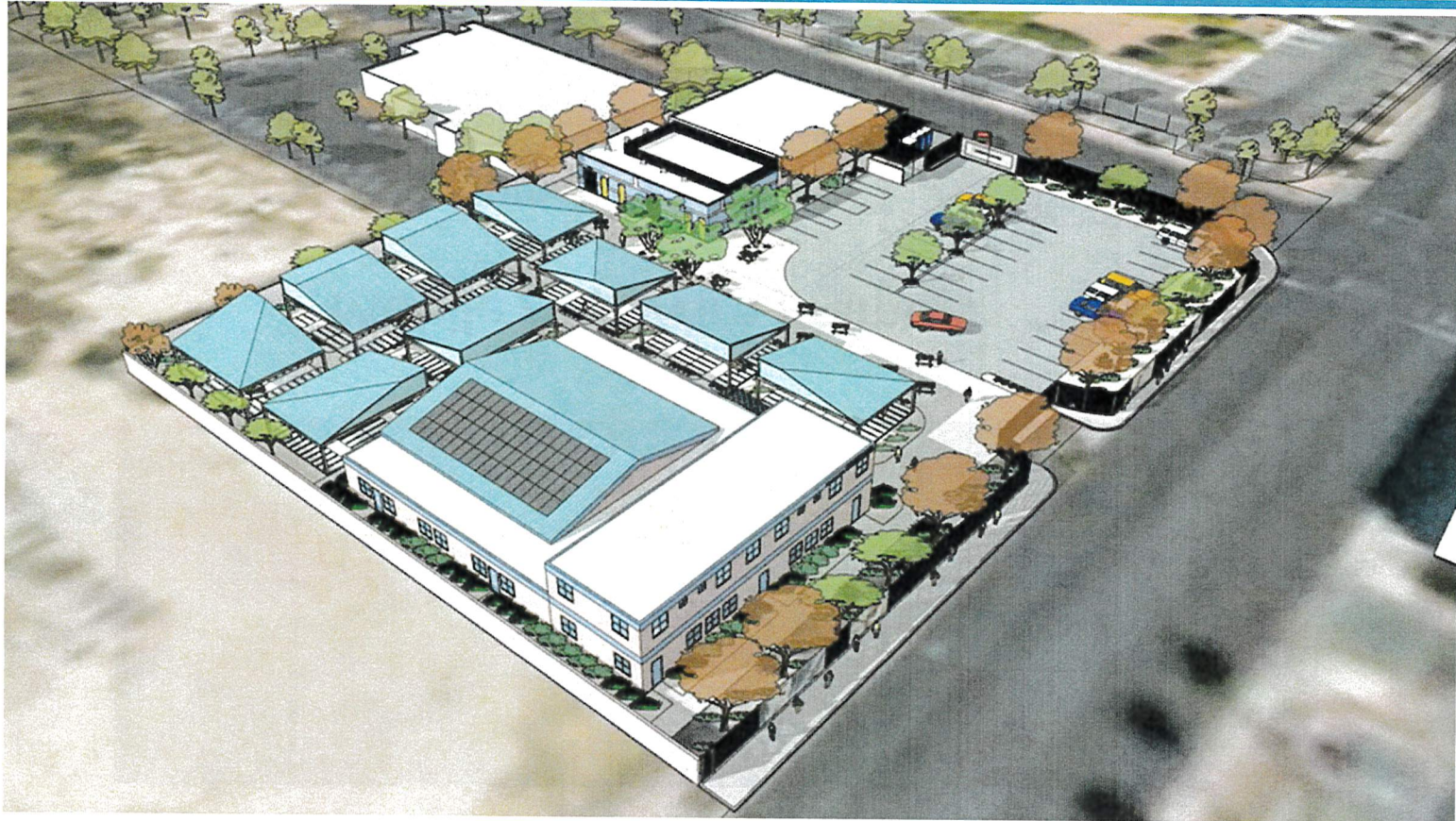
# Corridor of Hope (Las Vegas, Nevada) COURTYARD







# Corridor of Hope (Las Vegas, Nevada) **COURTYARD**







## Mobile App Wire Frames

Homeless Services  
Neighborhood Services

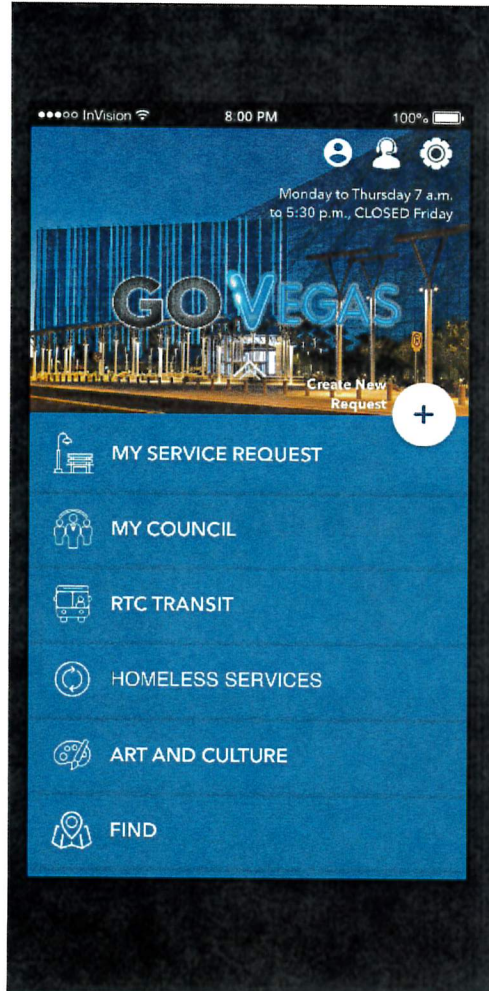
[Self-Navigation Example](#)



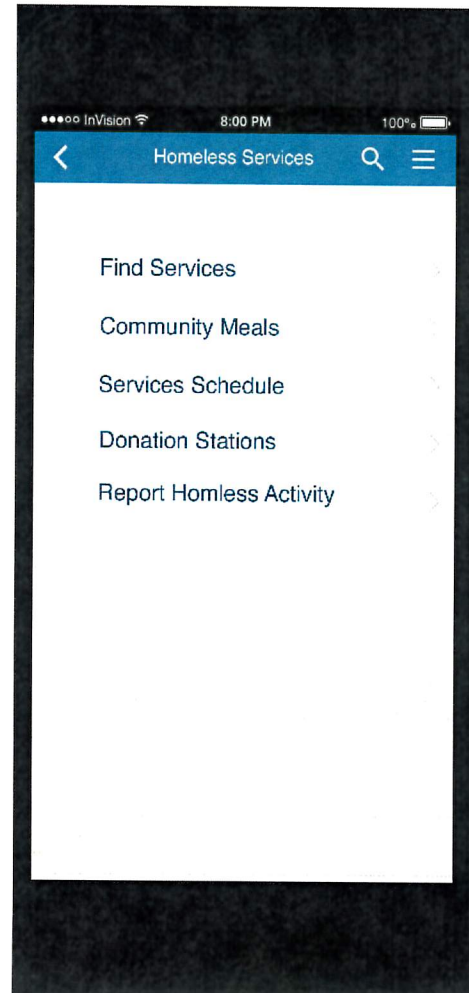




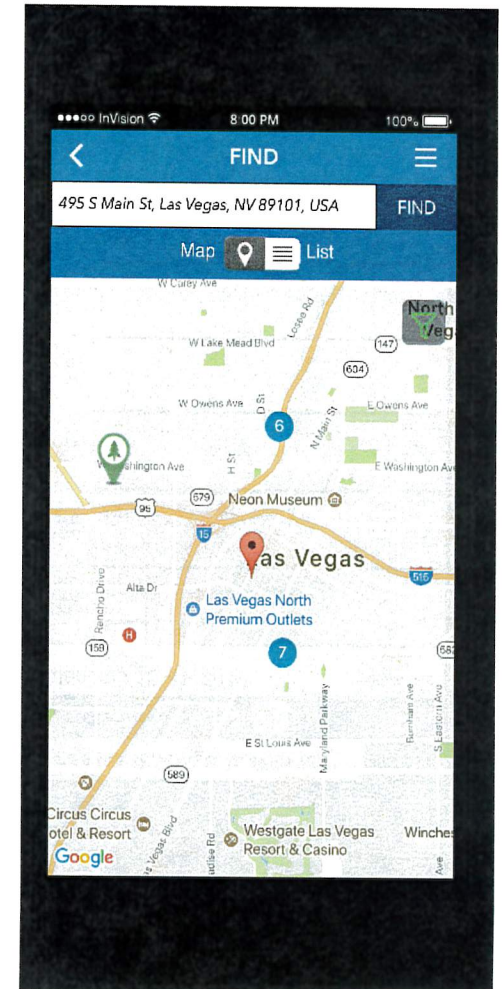
Home Screen - Categories



Subcategories



Mapping Function





## Resource Information

495 S Main St, Las Vegas, NV 89101, USA FIND

Map 📍 ☰ List

🔍 Search

**ABC Shelter** 0.5 Mi

100 Main Street, 1st Floor  
Las Vegas, NV  
Phone: 702-555-1212  
Hours: 06:00 AM - 09:00 PM

📍 ☎ 🐦 Twitter

**ABC Shelter** 0.6 Mi

100 Main Street, 1st Floor  
Las Vegas, NV  
Phone: 702-555-1212  
Hours: 06:00 AM - 09:00 PM

📍 ☎ 🐦 Twitter

**ABC Shelter** 1.0 Mi

100 Main Street, 1st Floor  
Las Vegas, NV  
Phone: 702-555-1212  
Hours: 06:00 AM - 09:00 PM

📍 ☎ 🐦 Twitter

**ABC Shelter** 1.3 Mi

100 Main Street, 1st Floor  
Las Vegas, NV

## Calendar Function

495 S Main St, Las Vegas, NV 89101, USA FIND

Map 📍 ☰ List 📅

Week View

December 2016

MON	TUE	WED	THE	FRI	SAT	SUN
1	2	3	4	5	6	7
6	7	8	9	10	11	12
13	14	15	16	17	18	19
20	21	22	23	24	25	26
27	28	29	30	31		

EVENT

06:00 AM - 09:00 AM Service 1

11:00 AM - 02:00 PM Service 2

05:00 PM - 09:00 PM Service 3

## Weekly Calendar

495 S Main St, Las Vegas, NV 89101, USA FIND

Map 📍 ☰ List 📅

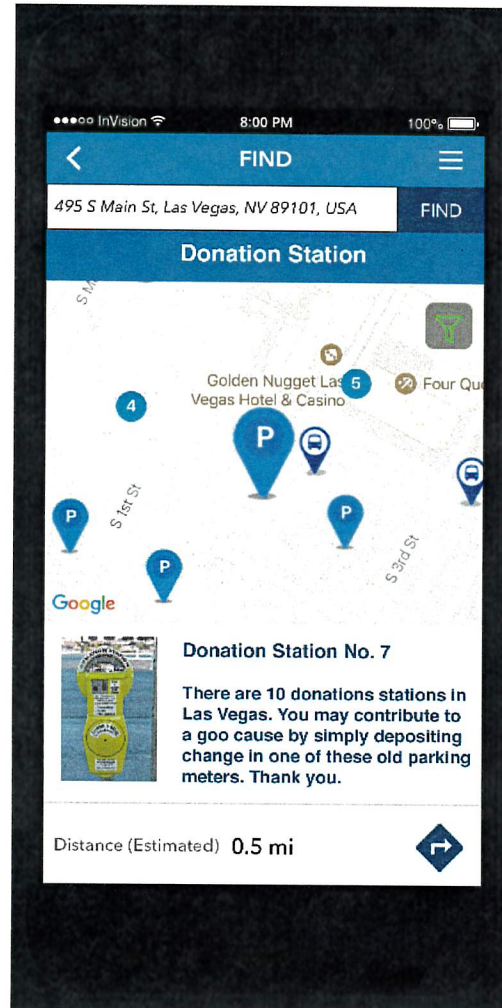
January 15-21, 2019 Month View

Day	Service 1	Service 2	Service 3
Wed 15	6AM-9AM	11AM-2PM	5PM-9PM
Thu 16	6AM-9AM	11AM-2PM	
Fri 17			
Sat 18			
Sun 19			
Mon 20			
Tue 21			

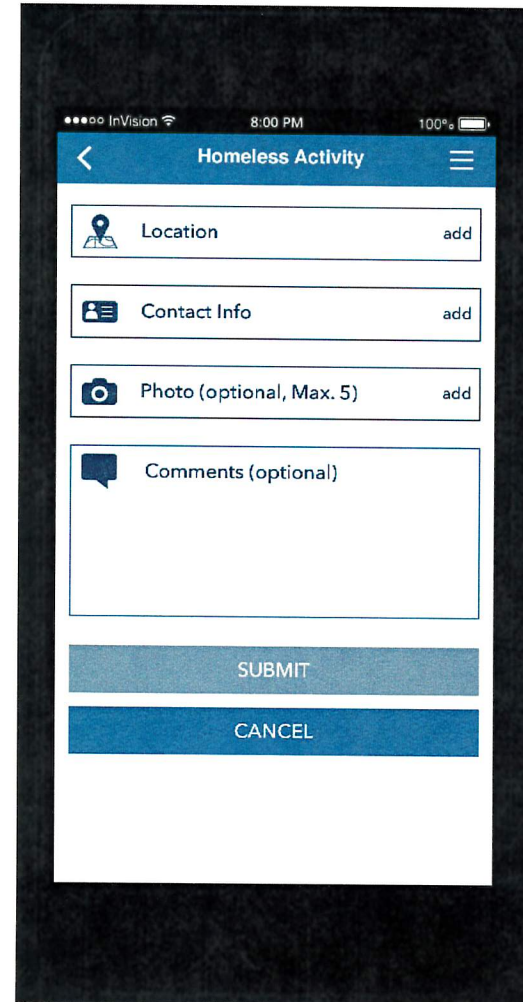




## Location and Description



## Service Requests







# Corridor of Hope The COURTYARD

March 2018

Questions/Comment

