

Southern Nevada Coordinated Outreach

Kelly Robson, Chief Social Services Officer
HELP of Southern Nevada





Clark County Nevada

8,061 Square Miles

Population 1,951,269

2017 PIT Data

6,490 homeless

4,353 unsheltered

265 living in tunnels



Coordinated Outreach



DOING THE
MOST GOOD™



AIDS HEALTHCARE
FOUNDATION



Help Hope Home

Ending Homelessness In Southern Nevada



Coordinated Outreach

- Jurisdictional Boundaries and competing interests
- Full coverage/avoid duplication
- Monthly meetings
 - BOLO list (Be on the lookout) & public alerts in HMIS
- Location pinning in HMIS
- Targeted Outreach planning
 - Discuss encampments and scheduled abatements
 - Data collection and outcomes



Types of Outreach

Sites

- Las Vegas Strip
- Tunnels and Storm Drains
- Deserts
- Mountains
- Abandoned buildings
- Streets
- Vehicles
- Encampments/Abatements
- Pan Handlers

Targeted Teams

- All unsheltered
- Seriously Mentally Ill
- Veterans
- Youth
- Geographic Population
 - MORE
 - Caridad











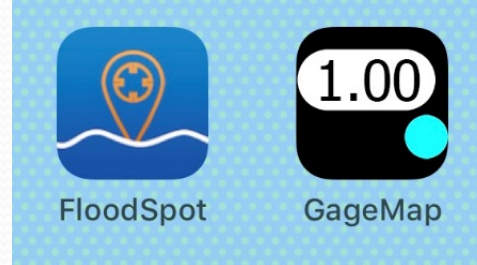


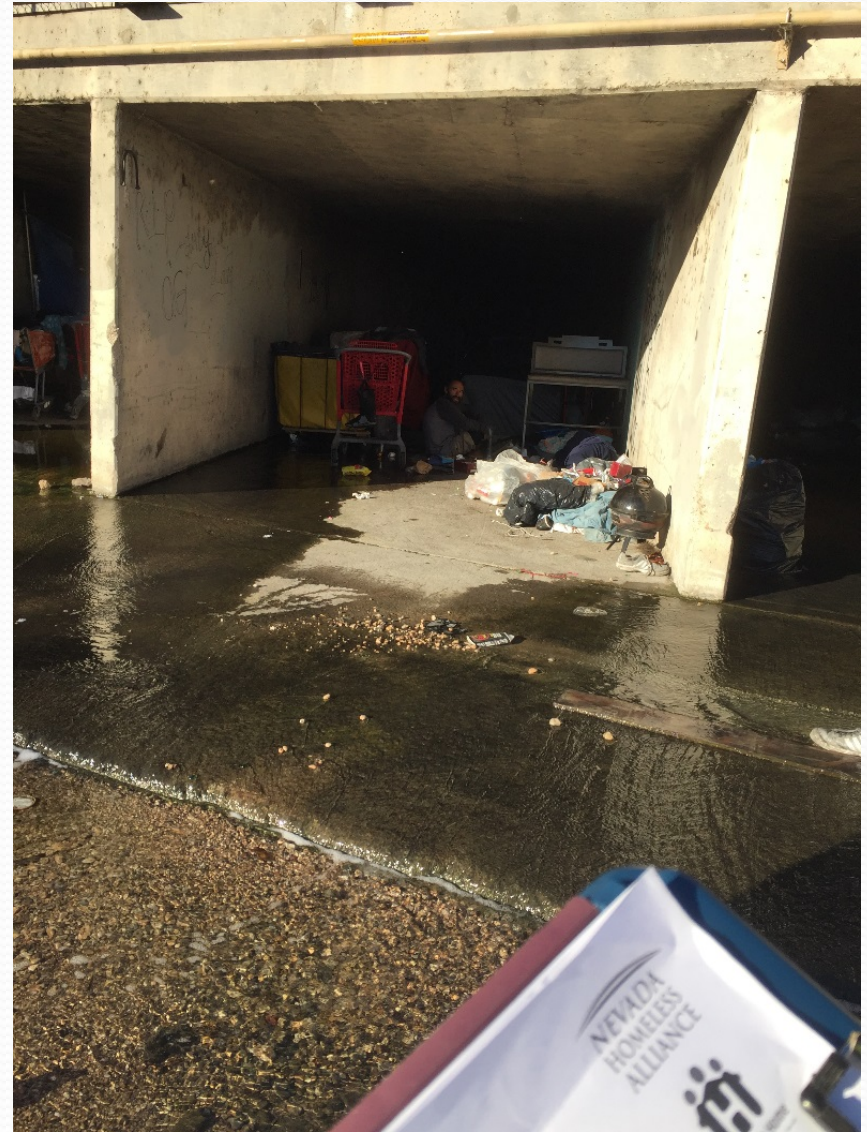
Outreach Services

- Building Rapport
- Life Sustaining Services (Food & Water)
- Housing Assessments
- Birth Certificates/ID
- Verification of Chronicity
- Bus Passes
- Clarity Passports (issued in the field)
- Clean Needle Exchange/Rapid HIV & Hep C Testing
- Hygiene Kits
- SNAP/Medicaid Applications
- Transportation to MH, Medical, Substance and Shelter
- Navigation
- Emergency Lodging
- Legal Advocacy

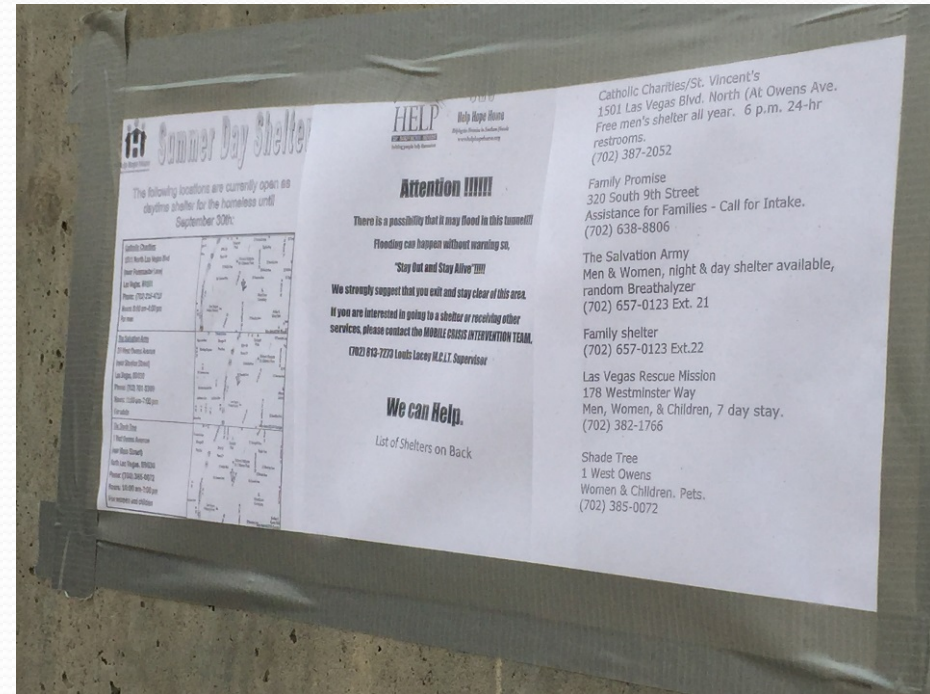
Tunnels and Storm Drains

- 6 deaths due to flood in tunnels since June 2017
- Flash flood/Monsoon season is July through September
- Regional Flood Controls partners with Outreach
 - Weather alerts
- Regional Flood Control Apps
- Rain and flood warnings
- Flood channels and storm drains can flood within minutes.
 - Flood water can move up to 30 mph
- Swift Water Rescues – assist First Responders











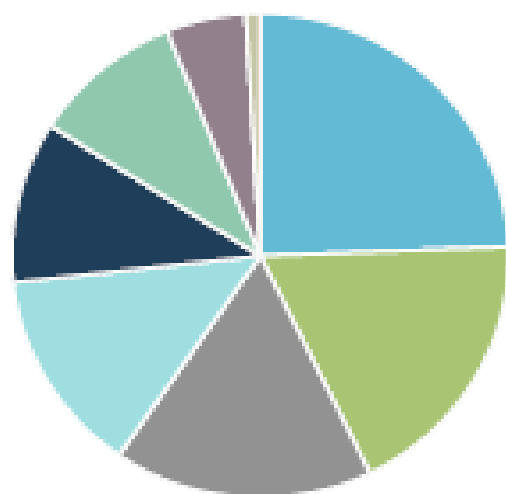


CE Housing Assessments

204

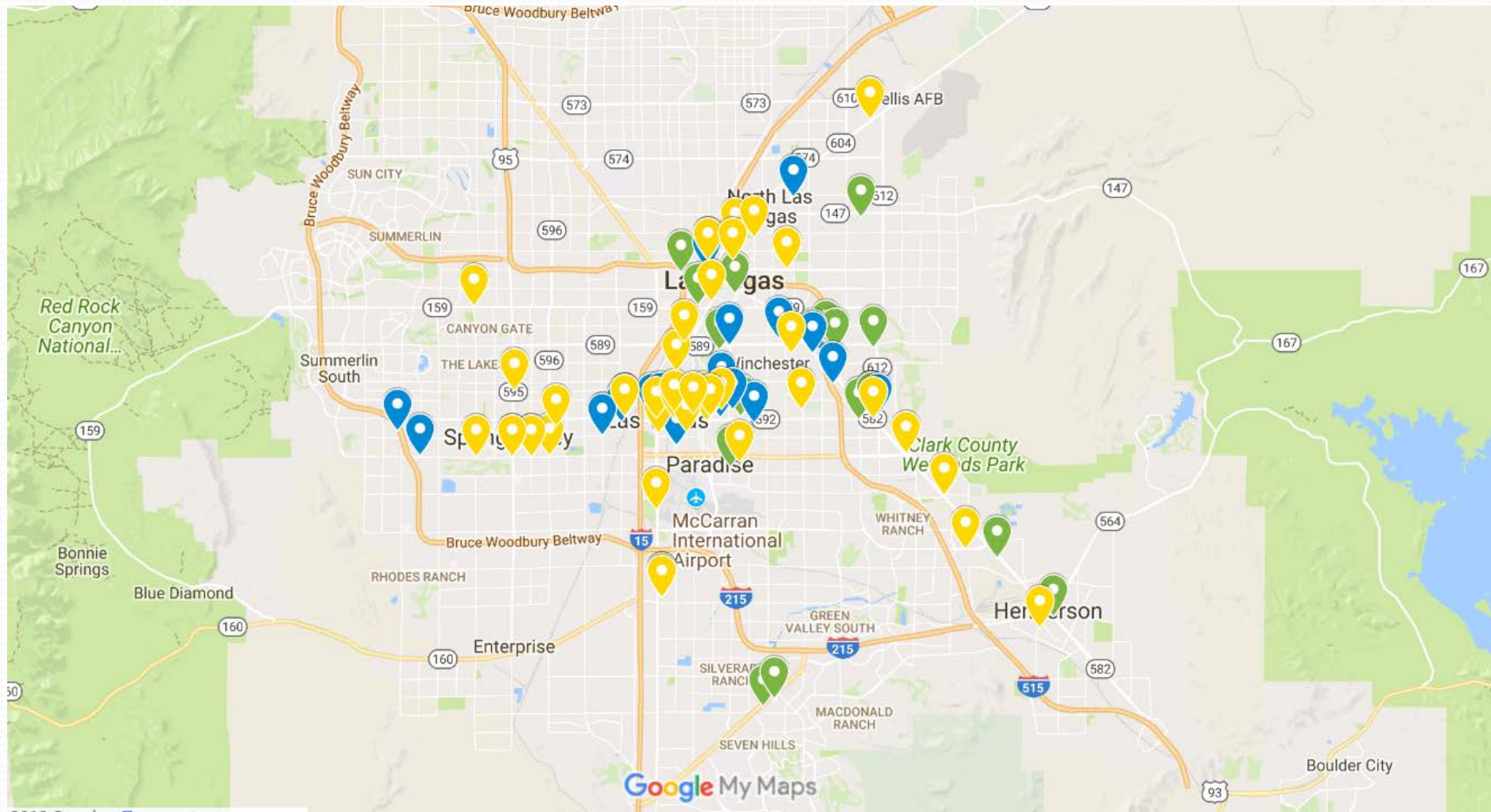
Outreach Clients Assessed for Housing (past 7 days)

Housing Assessments By Agency



- Mobile Crisis Intervention Team (MCIT) 24.41%
- Caridad 18.31%
- City of Las Vegas MORE 16.90%
- United States Veterans Initiative - Las Vegas 13.62%
- Southern Nevada Adult Mental Health Services 10.80%
- City of Las Vegas Courtyard 9.86%
- HOSN PATH 5.16%
- Nevada Health Centers Inc. 0.94%

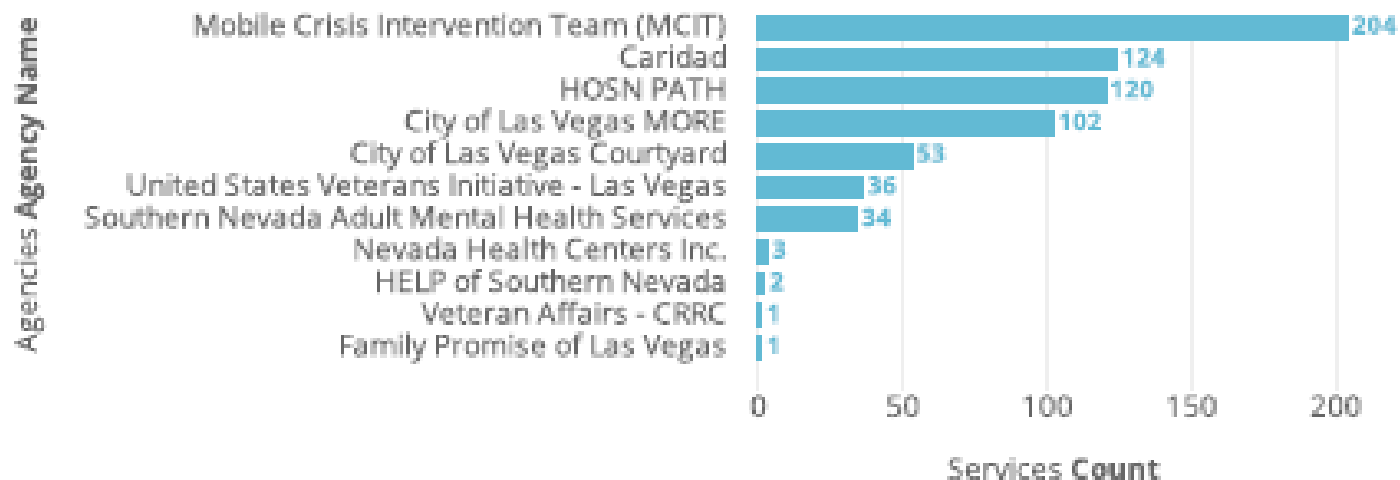
Mapping Outreach Locations



680

Total Outreach Services Provided (past 7 days)

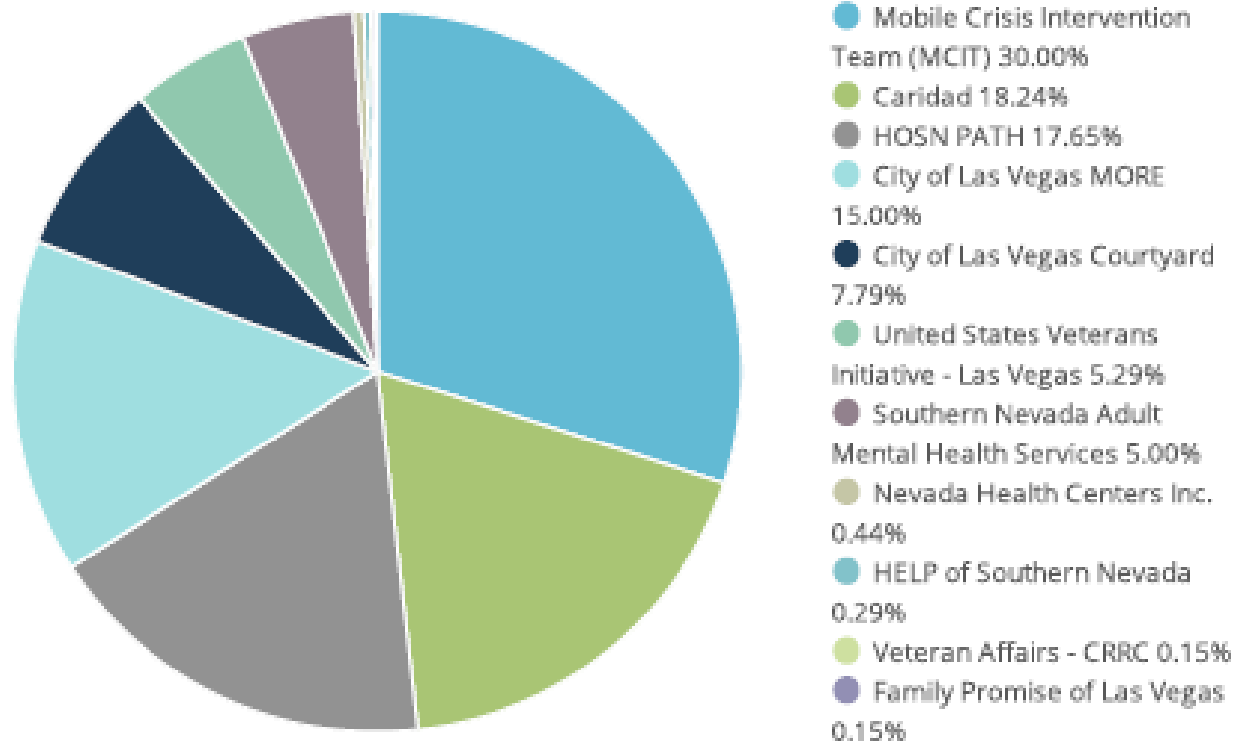
Services Provided By Agency



286

Total Clients (past 7 days)

Outreach Clients by Agency



2/9/18 - 2/15/2018



CLARITY

OUTREACH

E-mail



Password



Sign In

[Forgot Password?](#)

Clarity Outreach App



- Mapping of encampments and Clients
- Link with client record in HMIS (name, SS, DOB)
- Relocate encampments and persons by dragging to alternate location on the map.
- Users can enter persons name, age, date of birth, year of birth, last four of SSN, keywords from notes; or an encampment's name or description to find entries that are not visible within the users current map location view.

Add Encampment



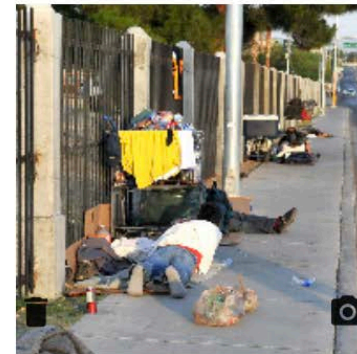
Name

Description

SAVE

CLOSE

Edit Encampment



Name

Tauri Test Encampment

Description

testing encampment

☒ Active

 ADD PERSON

Persons



Deadpool Test, 48, Male

EDIT

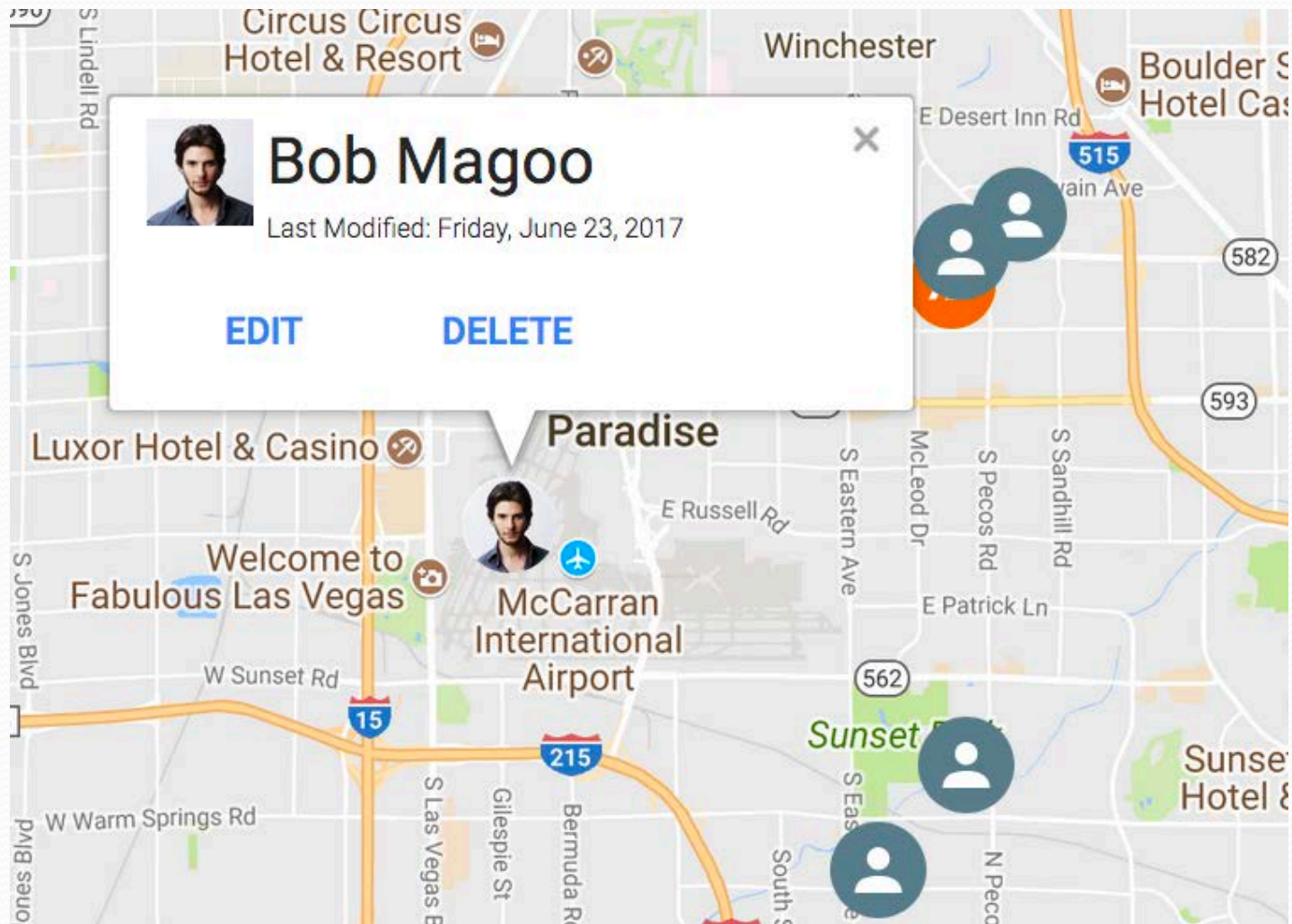


Tauri Test, 46, Female

EDIT

SAVE

CLOSE





CLARITY
OUTREACH

NEARBY ENCAMPMENTS

NEARBY PEOPLE



ADD PERSON



ADD ENCAMPMENT



Bitfocus

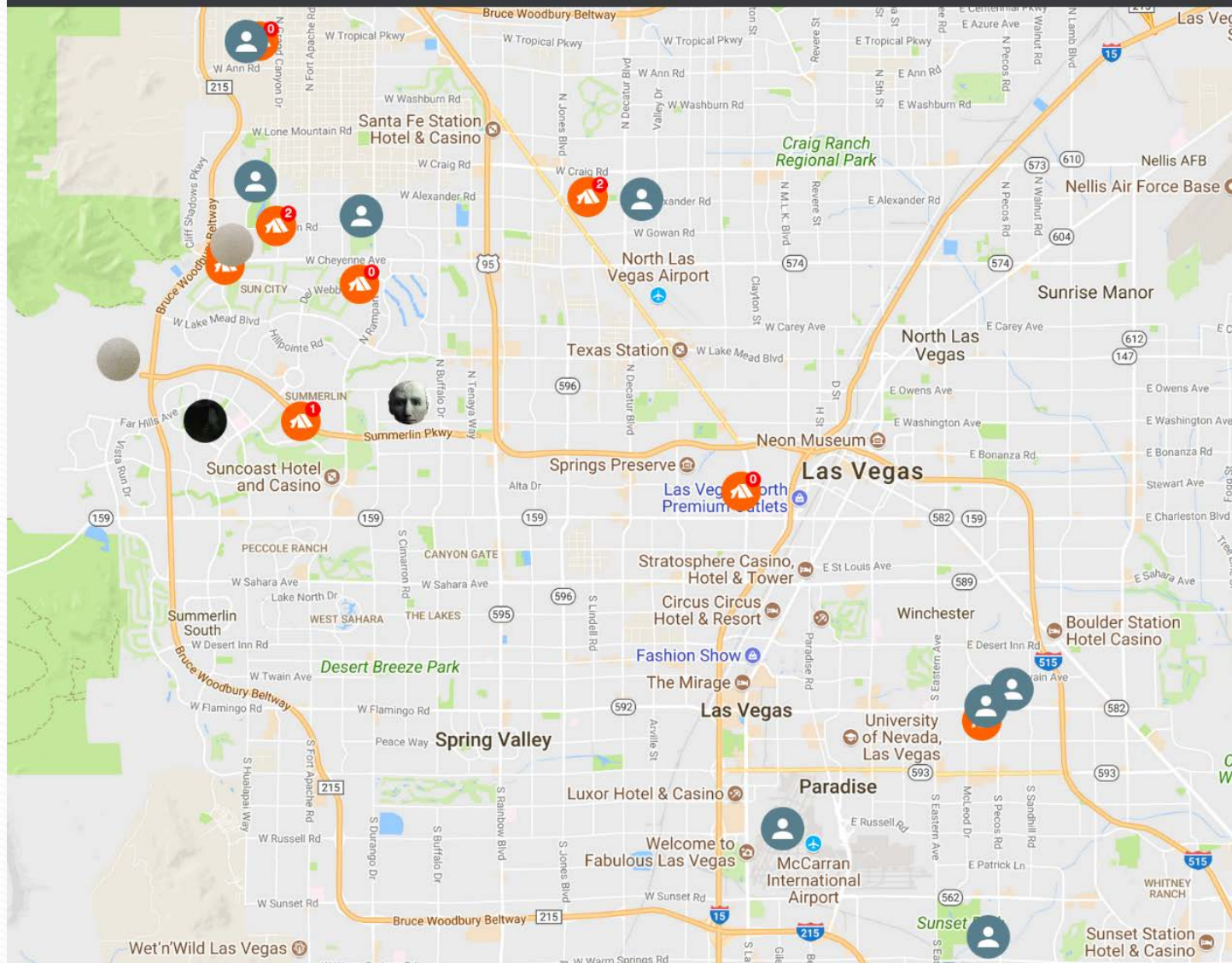
red sweater



Ryan Added

Locate

EDIT



- 
- For more information on the Clarity Outreach app contact:

support@Bitfocus.com

or

702-614-6690