

# Coordinated Entry Working Group Report to the CoC Board

## **Working Group: Coordinated Entry**

Chairs: Michele Fuller-Hallauer and Kelly Robson

Held: **May 15**, Clark County Social Service, 1600 Pinto Lane.

### Attendance:

Mindy Torres, Louis Lacey, Sylvia Davis, Kimi Schroeder, Melissa Jacobowitz, Derrick Felder, Linda Godoy, Julee King, Tauri Royce, Angel Lash, Tanya Sutton, Jennifer Varsallona, Peter McCoy

## **Accomplishments-Action Items Completed:**

- AWOC—LINK Teams at Clark County Social Service are starting as soon as LINK Outreach staff are hired and trained by HOSN.
- Youth—Westcare has no more youth housing programs.
- Families-- Made lots of referrals coming up on the queue. Hope Link stating six of their referrals were not homeless. Jennifer spoke with Dani at Hope Link, and the process to remove individuals who are not homeless from the queue when they deny the referral.
- Survivors of DV--7 families seeking housing, four of the families referred to LSS. One individual has been referred and assigned to AWOC PSH. Two undocumented families-Sylvia found a property that is willing to work with them and house them.
- Veterans-- Reports that they are seeing an upswing in the numbers of homeless vets coming to S Nevada and are having a difficult time maintaining functional zero for vets.
- Looker Report: (see Attached)
- Matchers: Expect to finalize SOP's by end of July. This is important for transition of matching duties to HOSN when they get their CoC Matching grant.
- Coordinated Entry Working Group Governance is finalized (see attached)
- Discussion around matching for doubling up/roommate situations. More research and discussion for future meetings.
- HMIS--New Coordinated Entry features to be implemented prior to next meeting. Ability to snooze clients on the queue (if clients are in jail), additional response fields when referral denied, improve tracking for contact information - warning on queue. Will be able to do Community Queue and housing cross checks.
- Trainings-- New Assessor Training May 22nd-830-12p at CCSS Pinto Lane -- This is new assessor training for new people who have not been trained before. This is offered every quarter.
  - Registration: Quarterly Coordinated Entry NEW Assessor Training: All TOOLS = If there are not enough people (10) the training will be canceled.
- Community Queue: Total 1,677
  - Chronic: 593
  - Adults without Children (AWOC): 1396
  - Families : 208
  - Youth/Transition Age Youth (TAY): 73
- Vacancies:
  - AWOC PSH: 0

## Coordinated Entry Working Group Report to the CoC Board

- AWOC RRH: 14
- AWOC Safe Haven: 7
- Families PSH: 0
- Families RRH: 0
- Youth RRH: 0
- Youth TH: 9
- Vets TH: 2
- Vets SSVF: 0

Next Meeting: June 19 1-3pm Clark County Social Service, 1600 Pinto Lane, 3<sup>rd</sup> floor training room.

### **Near term: Action Items In-progress/Pending:**

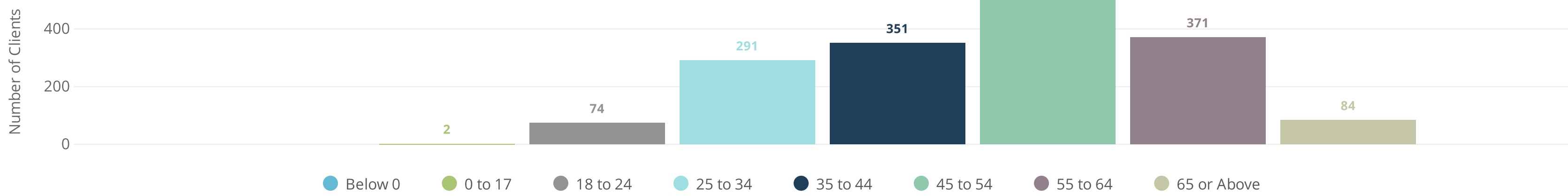
- Matchers are working on writing their process, expectations, code of conduct and standardized report for vacancies and referrals
- Process for considerations for matching housing units the include room-mate situations
- Determine process for how to address folks who left the community via bus ticket programs and have returned and are in need of housing
- Undocumented individuals and families need to be on a future agenda.

Current Statistics for Clients Active on the Community Queue

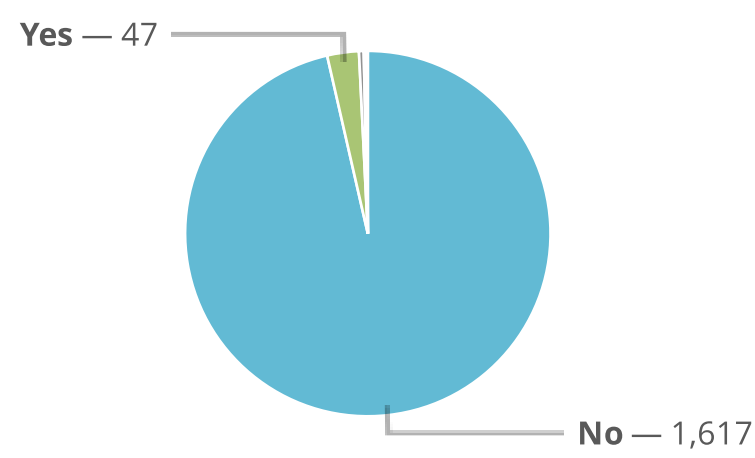
1,677  
Total Clients Currently on the Queue

593  
Chronic Homeless

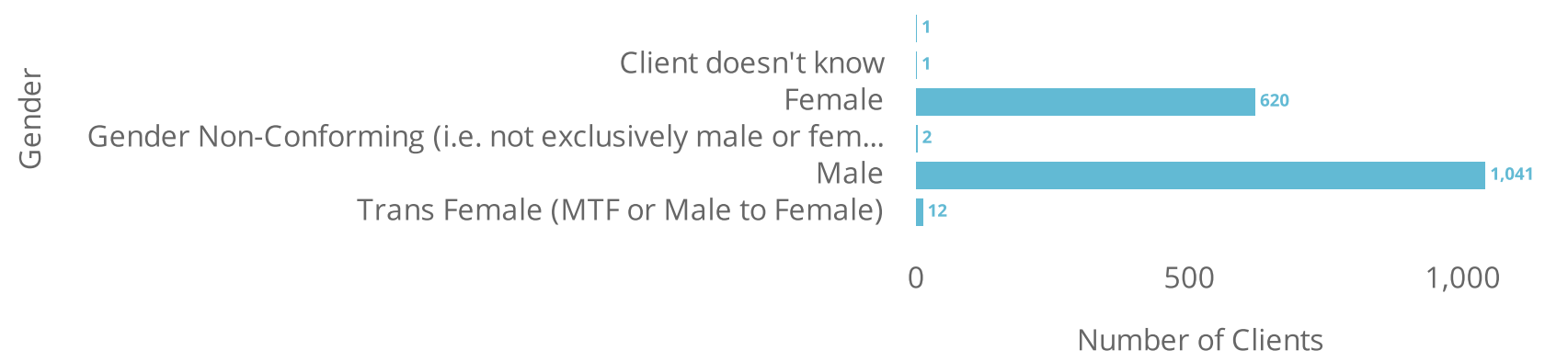
Age Tier of Clients on the Queue



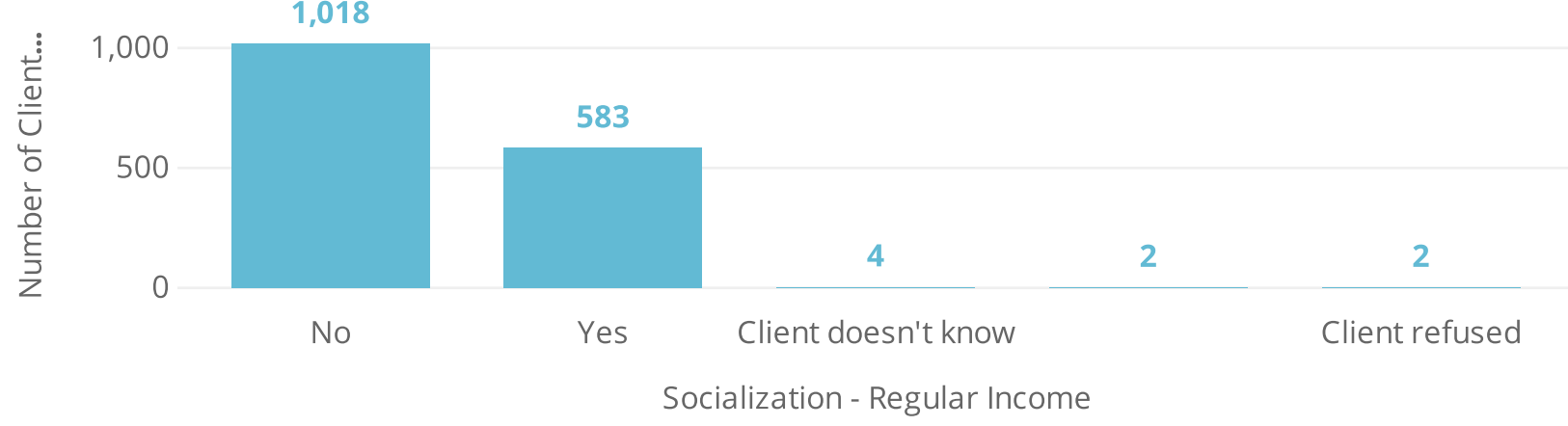
Veteran Status



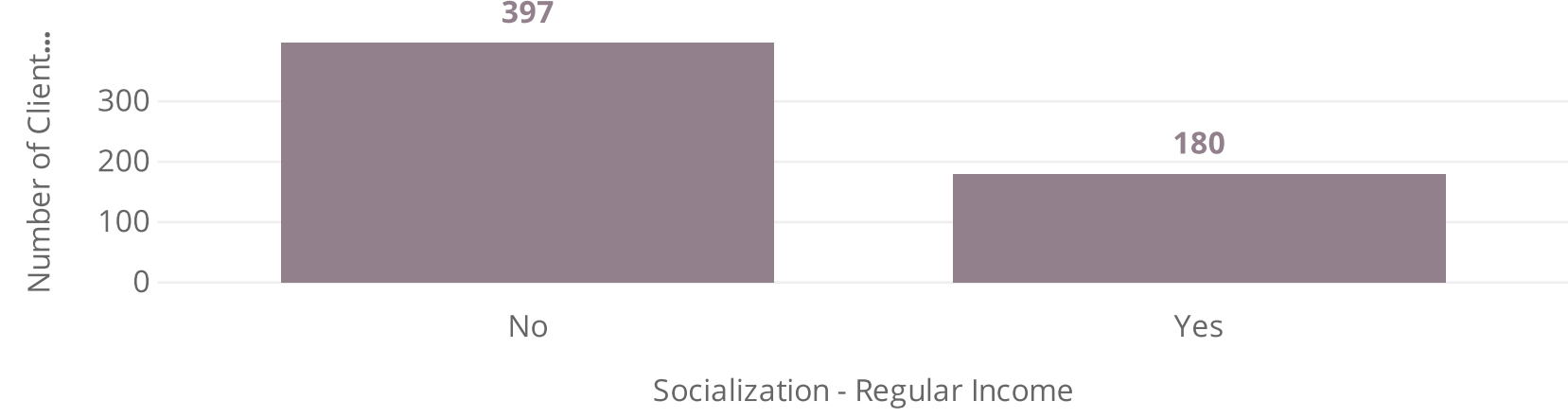
Gender



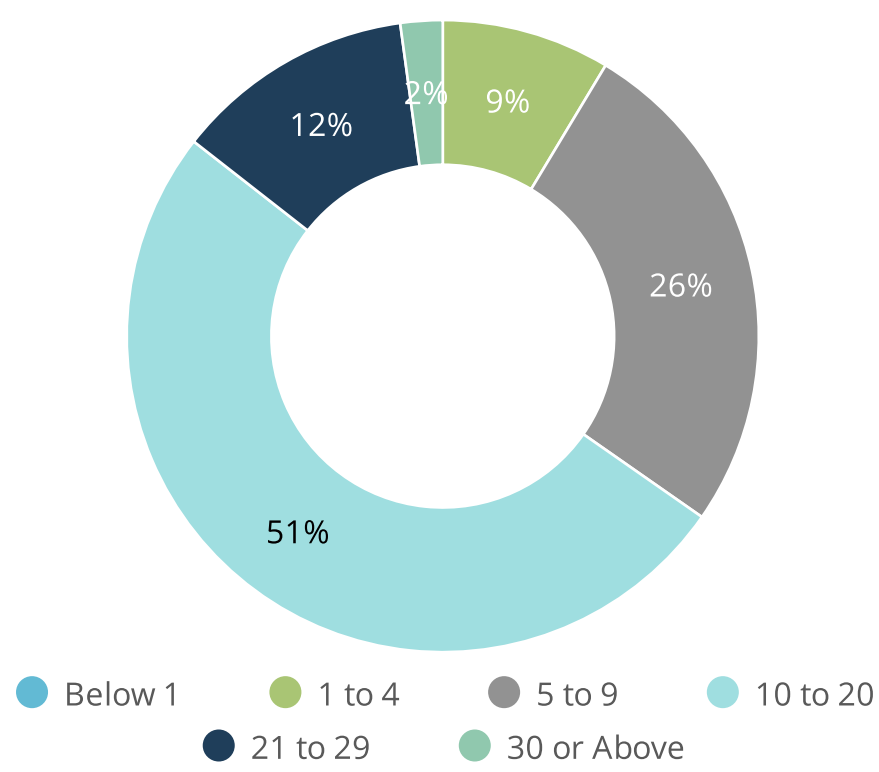
Non-Chronic with Regular Income



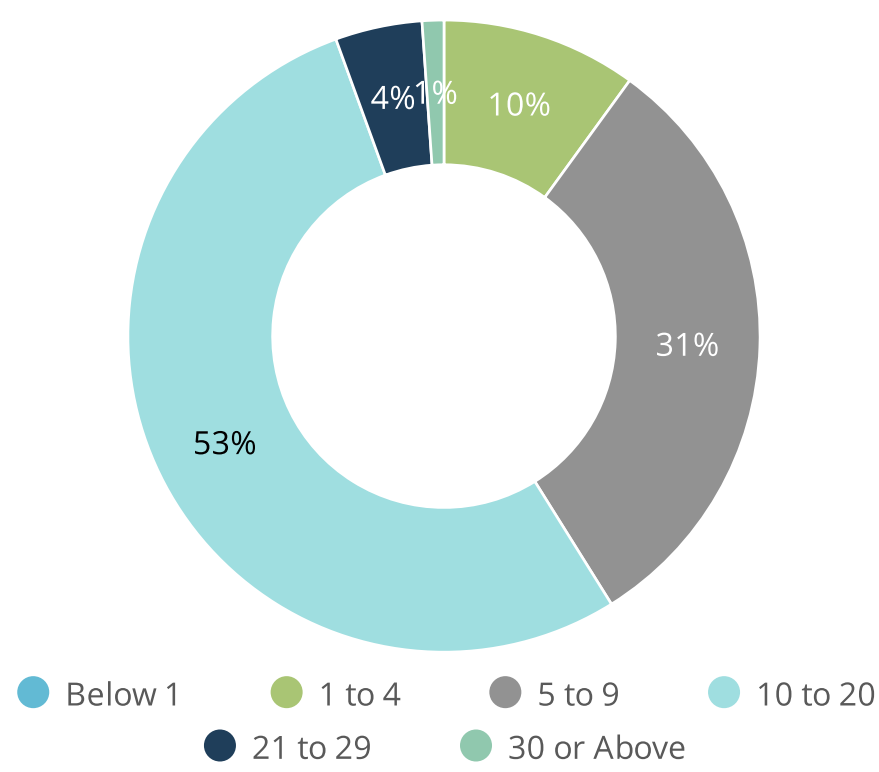
Chronic Homeless with Regular Income



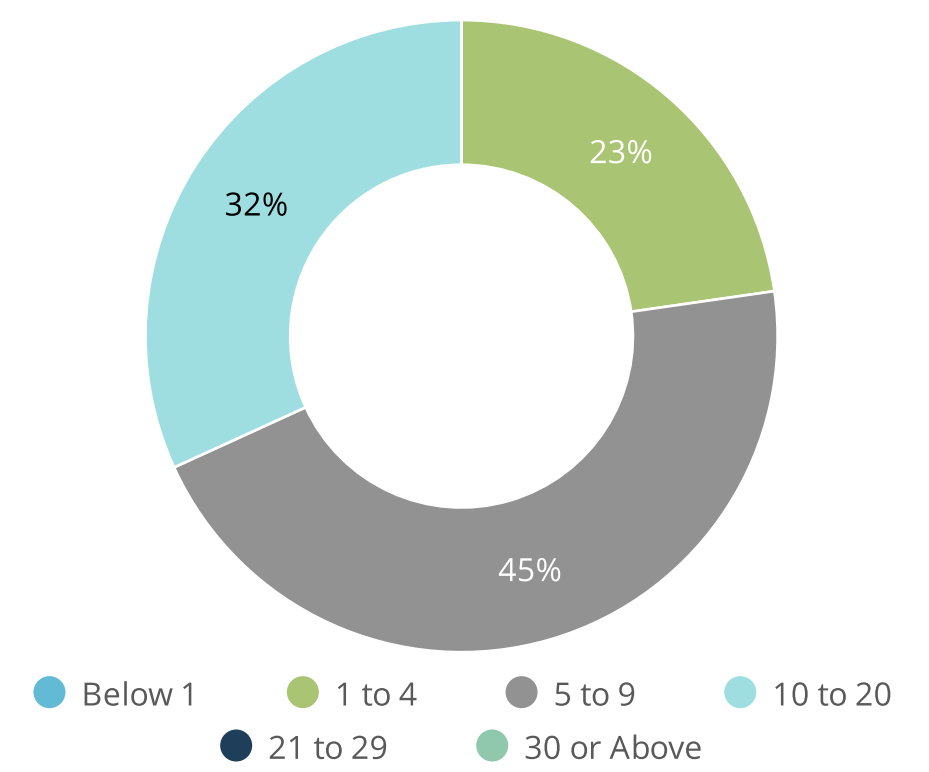
CHAT Score Range



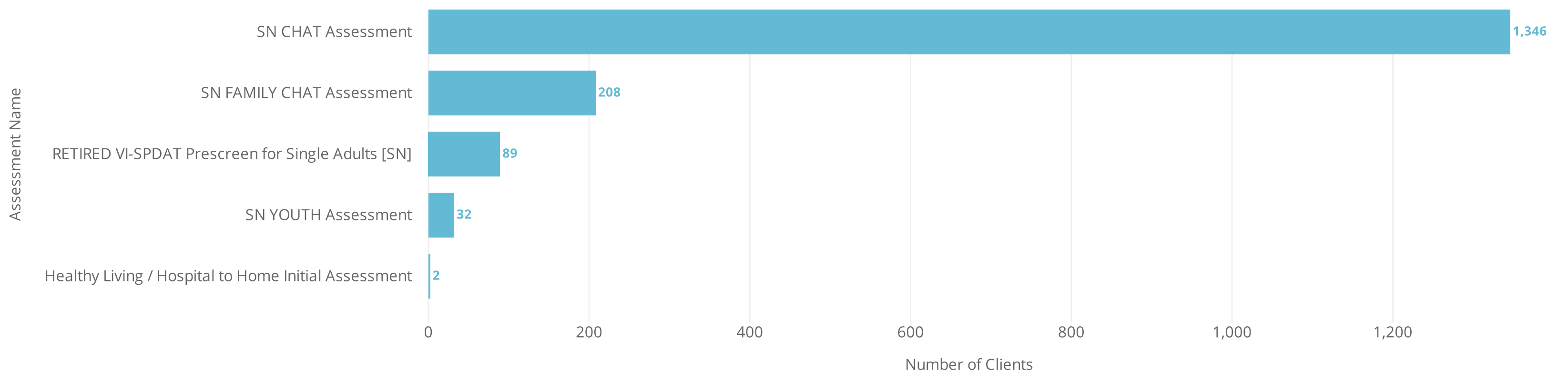
F-CHAT Score Range



YOUTH Score Range



Clients on the Queue by Completed Assessment Type



# COORDINATED ENTRY WORKING GROUP GOVERNANCE

---

Purpose: The Coordinated Entry Working Group (CE Working Group) is a working group of the Southern Nevada Homelessness Continuum of Care (SNH CoC) Board, overseeing the planning and implementation of Coordinated Entry (CE) in Southern Nevada, as well as providing updates to the SNH CoC.

Major fundamental change to the system needs to go to the SNH CoC Board for approval. If decisions don't conflict with what we have in place throughout policies and procedures, then it does not need to go to the board.

Decisions will be made by consensus. In the event consensus is not able to be reached, then any member of the group can call for a formal vote.

Each member of the working group is representing a group such as:

- Youth
- Families
- Adults without children
- Victims of Domestic Violence
- Matchers
- HMIS Administrator
- Outreach
- Service Provider
- Veterans
- CoC Collaborative Applicant/Lead agency

Each representative group will have 1 vote. If there are more than one representative present for any represented group, then those members will confer and are entitled to a total of one (1) vote per represented group.

If anything rises to the level of needing input from the jurisdictions or funders, then those items will be elevated to the SNH CoC Board.

Any items that are fiscal related will be elevated to the SNH CoC Board.

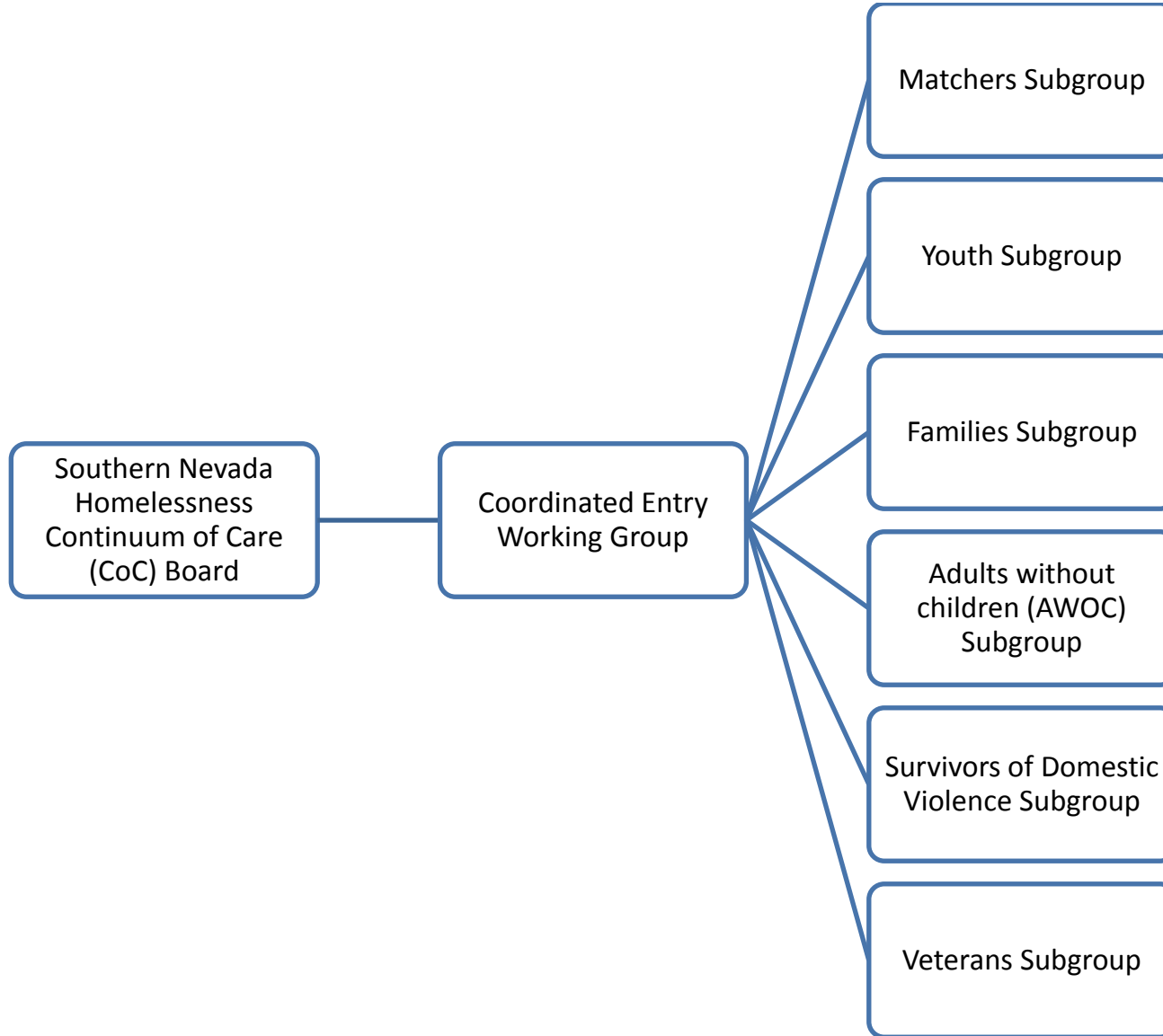
It is the responsibility of the working group members to ensure there is representation from their representative group at each meeting and the attendee is fully aware of previous discussions and decisions.

Each member of the group is responsible to ensure that their representative sub-groups are aware of the discussions and decisions made at the WG meetings as well as reporting from their sub-groups up to the working group.



# COORDINATED ENTRY WORKING GROUP GOVERNANCE

---



# COORDINATED ENTRY WORKING GROUP GOVERNANCE

## STRUCTURE

Reports to the  
SNH CoC Board

Responsible for  
oversight of the  
CE System

## OVERSIGHT RESPONSIBILITIES

Analyze HMIS  
Data

Analyze CE data

Make system  
adjustments

Make  
recommendations  
to SNH CoC Board

Continuous  
Quality  
Improvement of  
the CE System

Conflict  
Resolution/  
Resolving  
Grievances

## REPRESENTATIVE MEMBERS

Matchers Lead

Youth Lead

Family Lead

AWOC Lead

Survivors of  
Domestic Violence  
Lead

Veterans Lead

Outreach Lead

Service  
Providers Rep.

HMIS  
Administrator

CoC Collaborative  
Applicant/Lead  
Agency

## INFRASTRUCTURE

Policies and  
Procedures

Matching  
Prioritization

Housing  
Assessments

HMIS

Reports from  
Sub-populations

Reports to the  
SNH CoC Board

HUD  
Requirements/  
Guidance

Communication  
with the  
Community