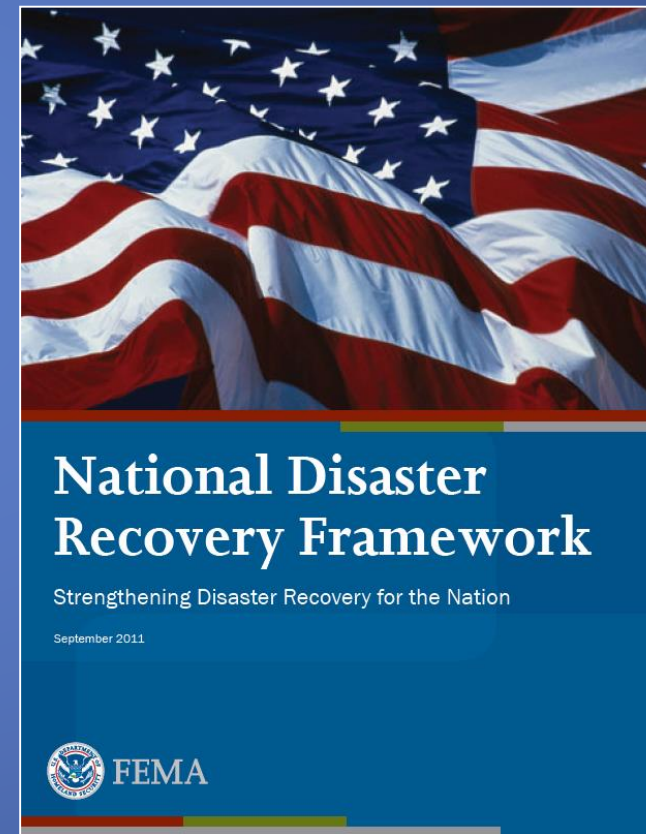
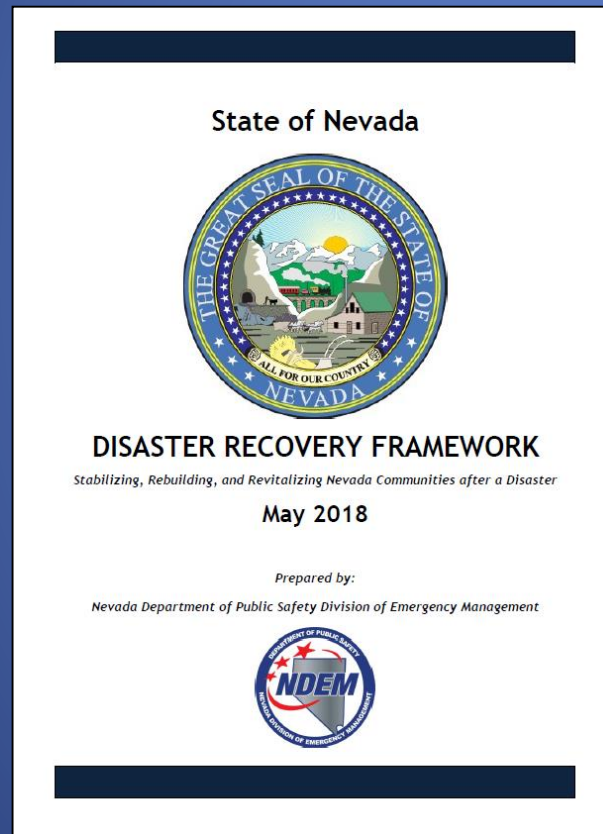


Recovery Briefing Clark County

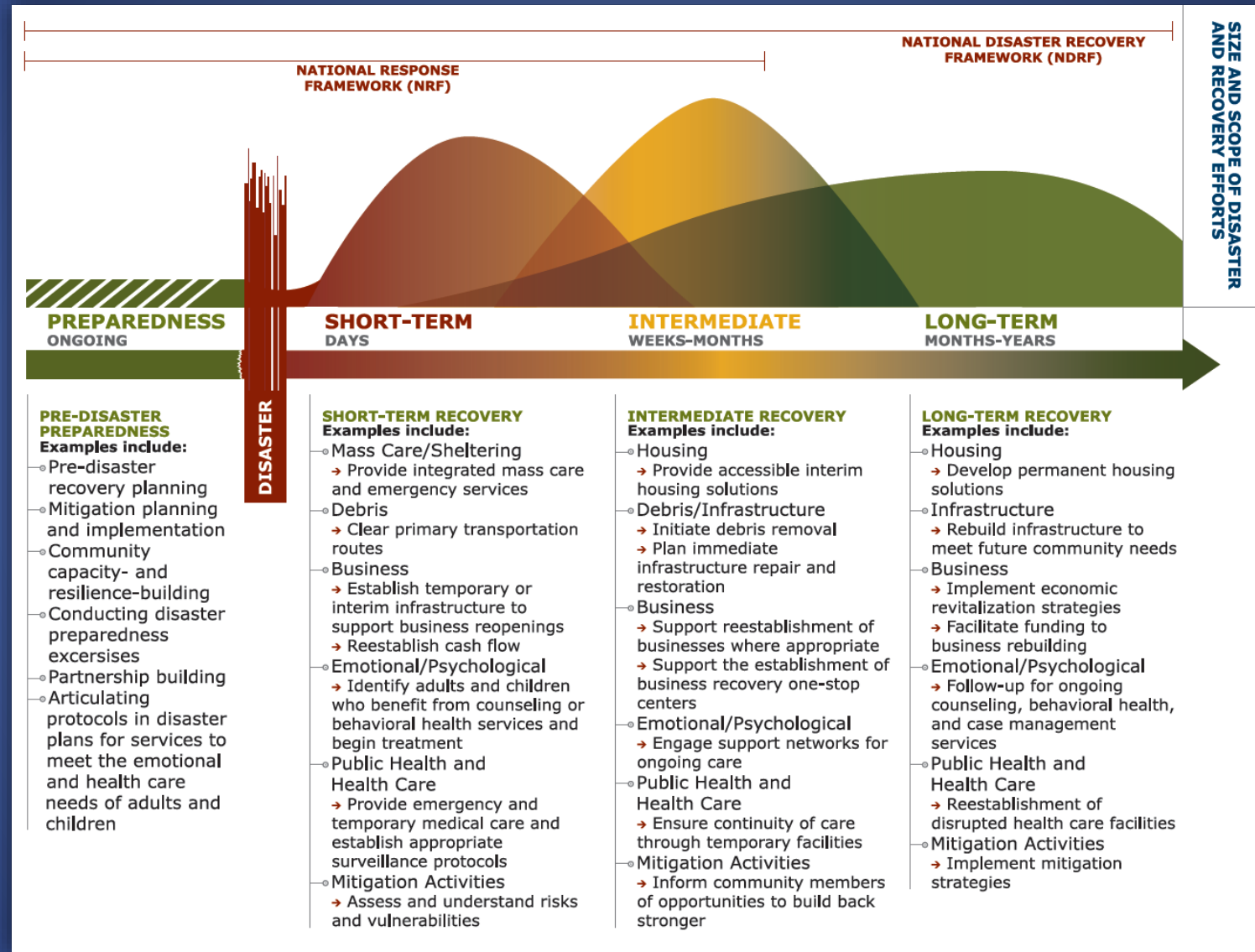
NV Disaster Recovery Framework
RSF Coordination

Misty Richardson - CCOEM- Recovery Coordinator

Disaster Recovery Coordination

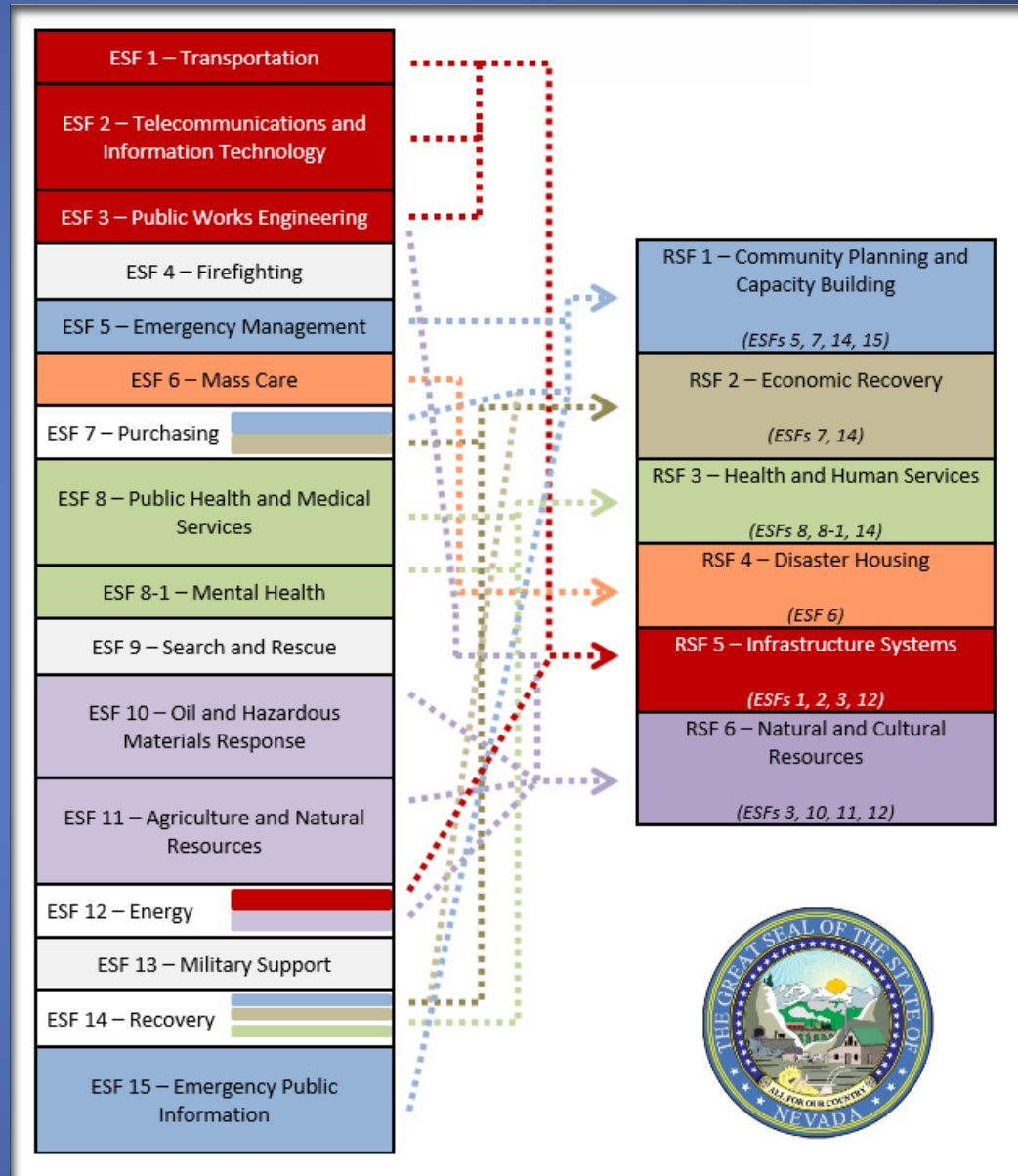


The Recovery Continuum

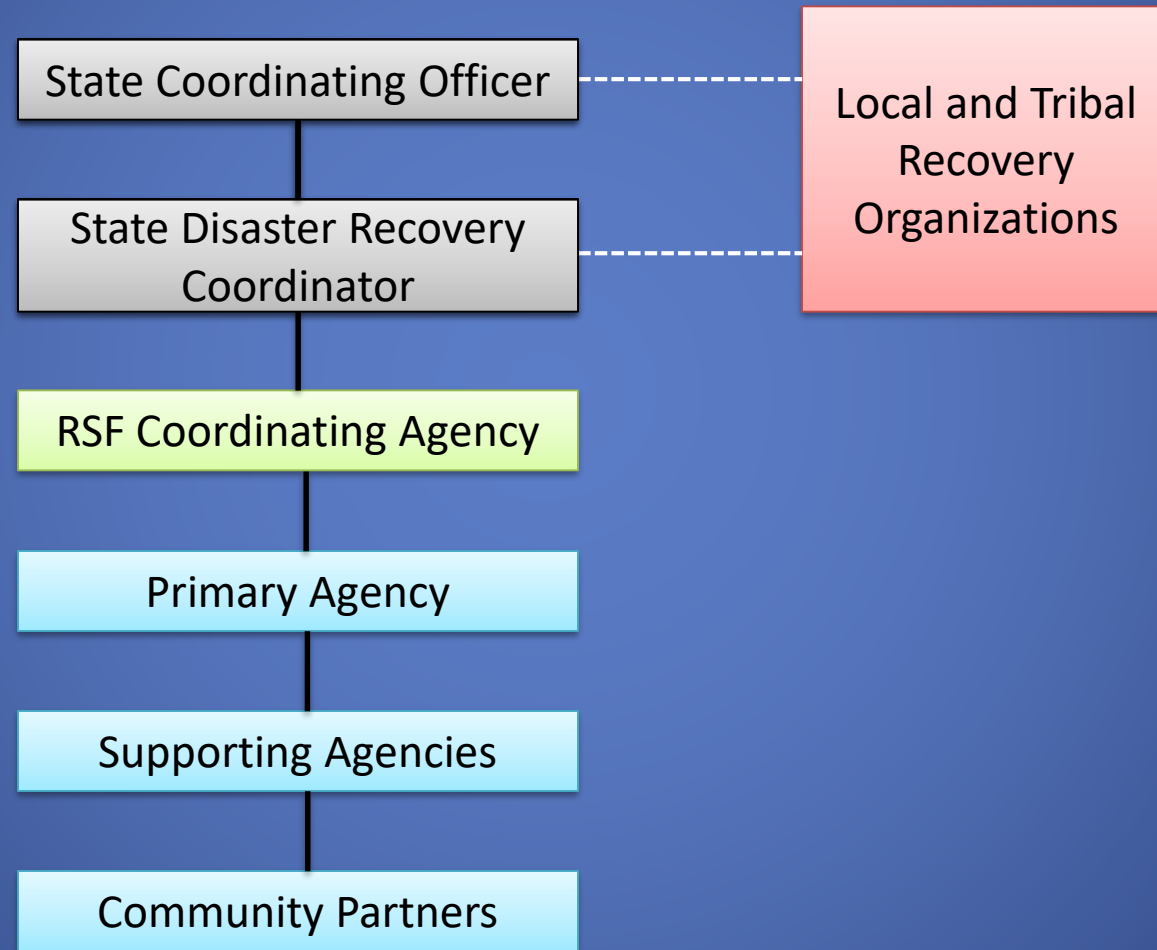


ESF to RSF

ESFs may transition to RSFs as we begin Recovery Operations



RSF Organizational Structure



RSF Primary Agencies

Community Planning and Capacity Building

Economic

Health and Social Services

Housing

Infrastructure Systems

Natural and Cultural Resources

CLARK COUNTY RECOVERY ORGANIZATION

COVID-19 2020-3-5

Incident Name / Start Date

MACC Policy Group

Marilyn Kirkpatrick, Chair County Commission
Yolanda King, County Manager
Les Lee Shell, Chief Administrative Officer
Jessica Colvin, Chief Financial Officer
Jeff Wells, ACM
Randy Tarr, ACM
Kevin Schiller, ACM
John Steinbeck, Fire Chief

Regional Policy Group

Marilyn Kirkpatrick, Chair	Steve Hill, President LVCVA
Yolanda King, Vice Chair	Virginia Valentine, President Nevada Resort Association
Dr. Fermin Leguen, Acting Chief Health Officer	Mary Sewald, President Las Vegas Chamber of Commerce
Joe Lombardo, Sheriff	Kiernan McManus, Mayor Boulder City
John Steinbeck, Fire Chief	Debra March, Mayor City of Henderson
Mary-Anne Miller, DA for Civil Division	Carolyn Goodman, Mayor City of Las Vegas
Mason Van Houweling, CEO UMC	Al Litman, Mayor City of Mesquite
Rosemary Vassiliades, Dir. Aviation	John Lee, Mayor North Las Vegas
Dr. Jesus Jara, Superintendent CCSD	Marta Meana, UNLV

Recovery Officer
Jeff Quinn

State Disaster Recovery Coordinator
Kelli Anderson

Recovery Steering Committee

Billy Samuels, Chair	Dr. Mike Johnson, SNHD	Karen Donnahie, Chair RSF3 WG
Misty Richardson, CCOEM	Mike Wilson, CCSDOEM	Kristin Cooper, Chair RSF4 WG
Rachel Skidmore, LVMPD EM	Brian Scroggins, State Charter Schools	Ed Zagalo, Chair Finance/Grants WG
Carolyn Levering, CLVOEM	Gregg Maye, UNLV	TBD, Chair After Action WG
Travis Anderson, NLVOEM	John Fudenberg, Coroner	
Jayson Andrus, Mesquite OEM	Jeff Hahn, LVCC	
Jeremy Hynds, COHOEM	Jim Chrisley, Dept Aviation EM	
William Grey, BCFDOEM	Robert Summerfield, Chair RSF1 WG	
Tori Begay, UMC EM	Shani Coleman, Chair RSF2 WG	

Recovery Coordinator
Misty Richardson

RSF 1 Workgroup

Robert Summerfield, CLV - Chair
Michael Mayes, BC
Michael Tasi, COH
Shani Coleman, CC, RSF2 Chair
Karen Donnahie, SNHD RSF3 WG Chair
Kristin Cooper, CCSS, RSF4 WG Chair
Ed Zagalo, Finance/Grants WG Chair

RSF2 Workgroup

Shani Coleman, CC - Chair
Bill Arant, CLV
Derek Armstrong, COH
Jim Chrisley, CC Dept Aviation
Jacqueline Halloway, CC
Justin Jones, CC
Ryan Juden, CNLV
Brad Keating, CCSD
Anthony Malloy, COH
Michael Mays, BC
Jim McIntosh, COH
Zach Miles, UNLV
Paul Moradkhan, Chamber
Janice Ridondo, Mesquite
Jonas Peterson, LVGEA
Lori Nelson-Kraft, LVCA
Eric Killian, UNR Co-Op Ext
Irene Bistamante Adams, Workforce Connections
Mike Cathcart, COH
Gina Gavan, NLV

RSF 3 Workgroup

Karen Donnahie, NHCPG, Chair
Felix Acevedo, VA Hosp
Ellen Richardson-Adams, DPBH
Teresa Etcheberry, CCSS
Robinson, Misty SNHD
Fornoff, Roland, HCA Sunrise
Unda Kalekas, CCSD
Scott Viver, COH
Nadine Atkinson, HCA
Kathy Underwood, UNLV
Joe Roberts, CCSD
Luciana Bolsz, Dignity
Anne-Michelle Ferko, UMC
Andre Pastain, BCH
Diane Orgill, Red Cross
Harriett Parker, LV Parute
Karla Ruggerio, VHS

RSF 4 Workgroup

Kristin Cooper, CCSS - Chair
Julie Calloway, BC
Susan Danielewicz, BC
Lisa Corrado, COH
Stacy DiNicola, COH
Arcelia Barajas, CLV
Joelynn Bluff-Fishoer, CLV
Shanna McPheters, Mesquite
Janice Ridondo, Mesquite
Jaini Christenson, NLV
Rick Damian NLV
Kevin Spes, CCSS
Randy Reinoso, CCSS
Christine Hess, Nevada Housing Coalition
Jacob LaRow, Nevada Housing Coalition
Martha Bredmeier, Nevada Housing Division
Chad Williams Southern Nevada Regional Housing Authority

Finance/Grants Workgroup

Ed Zagalo, CC - Chair
Rich Easter, NLV
Jason Goudie, CCSD
Rich Hoggan, LVMPD
Gregg Maye, UNLV
Paul Moradkhan, Chamber
Leslie Nix, COH
Diane Pelletier, BC
Paul Sikora, BC
Arcelia Barajas, CLV
Abbe Yaoben, CLV
Dodie Melendez, Mesquite
TBD, SNHD

After Action Workgroup

, CCOEM - Chair
TBD, SNHD
TBD, LVMPD
TBD, NV Hosp Assoc
TBD, UMC
TBD, MSST
TBD, CLV
TBD, COH
TBD, Mesquite
TBD, CNLV
TBD, BC

RSF 1 – Community Planning and Capacity Building (CPCB)

Mission

- Integrate local assets and capabilities to help local governments and impacted communities.

Activities

- Identify disaster impacts
- Provide planning support
- Promote an inclusive planning process

Primary Agency- CCOEM

- Robert Summerfield, City of Las Vegas, Work Group Chair

RSF 2 – Economic Recovery

Mission

- Integrate the expertise of county and city agencies to facilitate efforts to sustain and rebuild businesses and employment, and develop economic opportunities that result in sustainable and economically resilient communities

Activities

- Provide economic development support
- Support workforce development
- Assist in the identification of economic opportunities

Primary Agency – County Office of Economic Development

- Shani Colemand, Director, Workgroup Chair

RSF 3 – Health and Social Services

Mission

- Assess public health, healthcare and social services needs; restore basic health and social services; promote independence and well-being of community members

Activities

- Provide analysis of local health and social service impacts
- Support planning for the recovery of local health and social services programs
- Identify and leverage resources to enable the recovery of local health and social services

Primary Agency- SNHD

- Kareen Donnahie, Southern Nevada Healthcare Preparedness Coalition, WorkGroup Chair

RSF 4 – Disaster Housing

Mission

- Address pre- and post-disaster housing issues and coordinate the delivery of county resources to assist short term housing or develop new permanent housing options

Activities

- Identify gaps and resolve conflicting policy issues regarding housing
- Identify and leverage resources to assist in the development of immediate short term acute isolation and quarantine options and continue to support community long-term housing solutions

Primary Agency- Clark County Social Services

- Kristin Cooper, Assistant Director CCSS, WorkGroup Chair

Thank you for your service.

For recovery-related questions and information:

For Clark County Regional Recovery

richardsonm@clarkcountynv.gov