

The Impacts of COVID-19 and Eviction Risk in Nevada

September 2020

Nancy Brune, Ph.D.
Executive Director

Guinn
CENTER

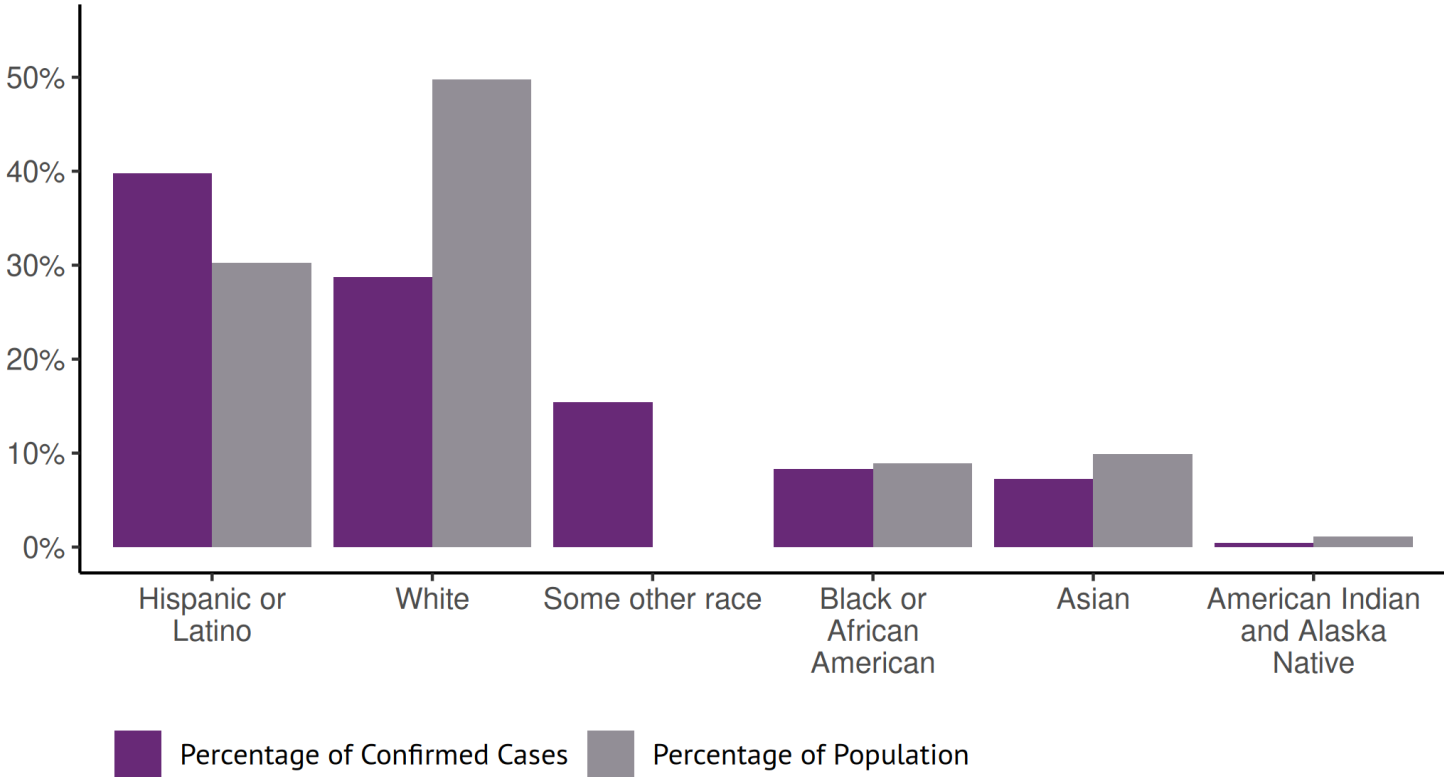


COVID-19 has disproportionately affected Communities of Color

Latinos in Nevada Account for a Greater Share of Confirmed COVID-19 Cases

Demographics of Confirmed COVID-19 Cases in Nevada

Compared to Demographics of Nevada's Population

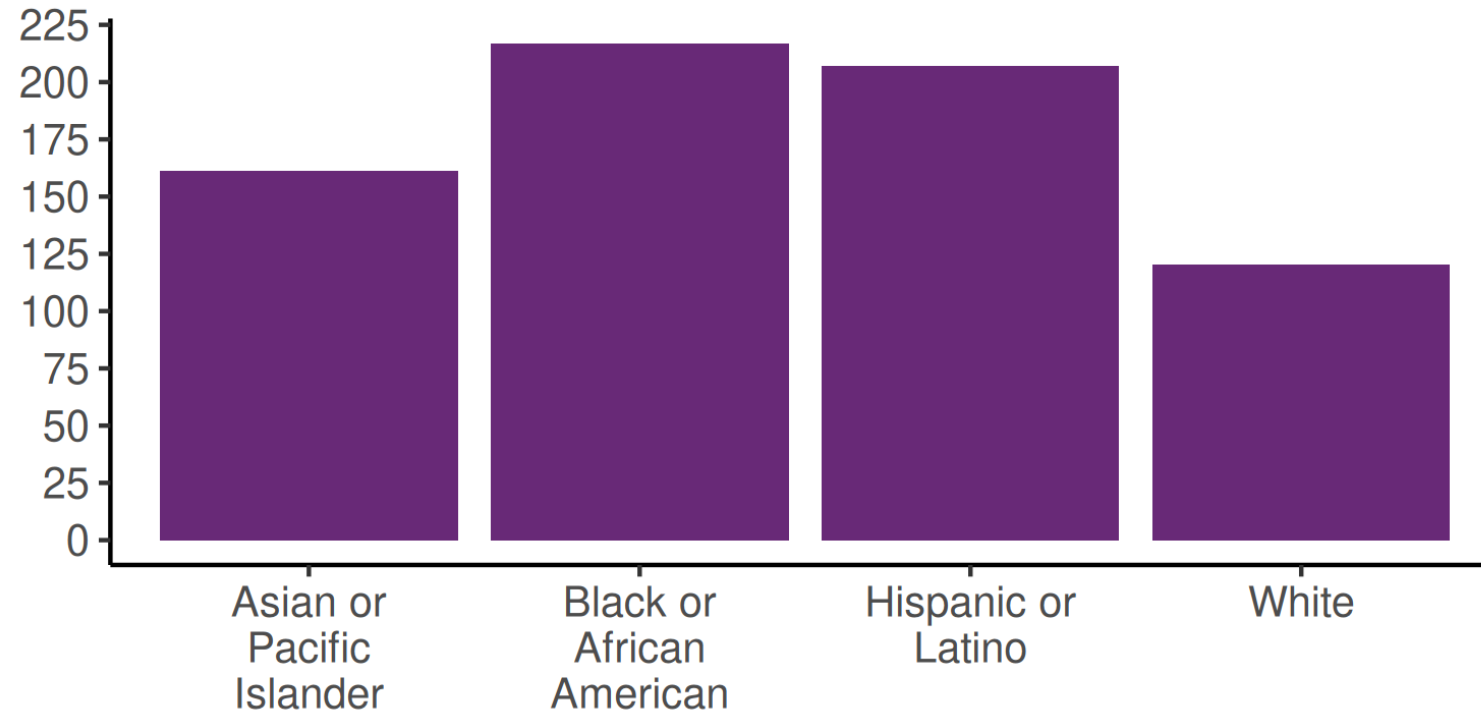


COVID-19 has disproportionately affected Communities of Color

African Americans Have the Highest Hospitalization Rate in Clark County

COVID-19 Hospitalization Rate in Clark County

Hospitalizations per 100,000 Population

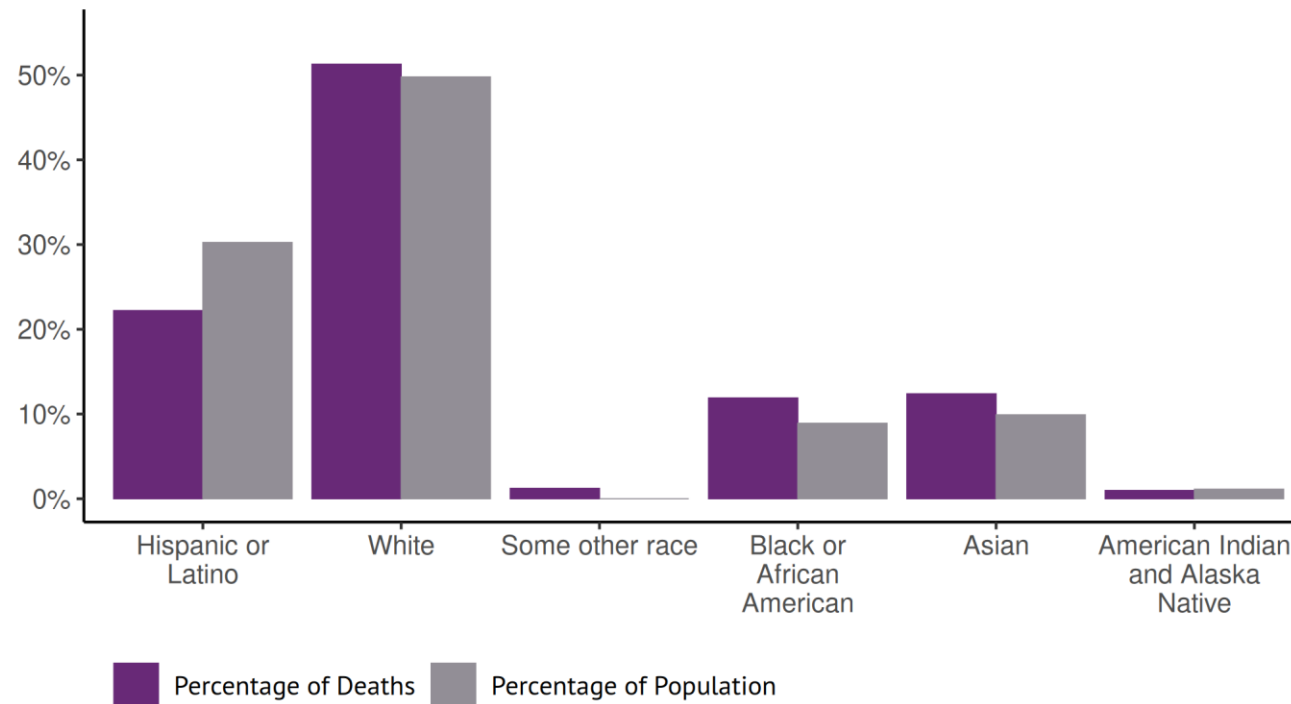


COVID-19 has disproportionately affected Communities of Color

COVID-19 Mortality Rates Are High Among Asian Americans and African Americans Relative to Their Share of the Population

Demographics of COVID-19 Deaths in Nevada

Compared to Demographics of Nevada's Population

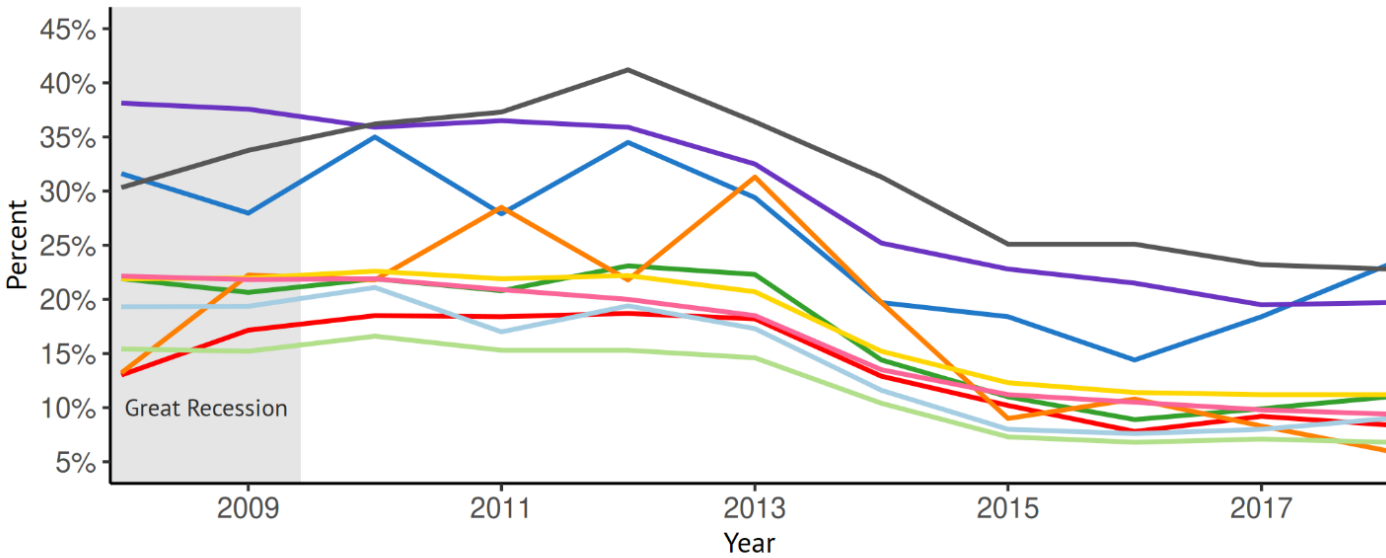


Underlying Health Issues and Health Care Access Factors Make Communities of Color More Vulnerable

A Large Proportion of American Indians and Latinos in Nevada Lack Health Insurance

Percentage of Nevadans Without Health Insurance by Race and Ethnicity

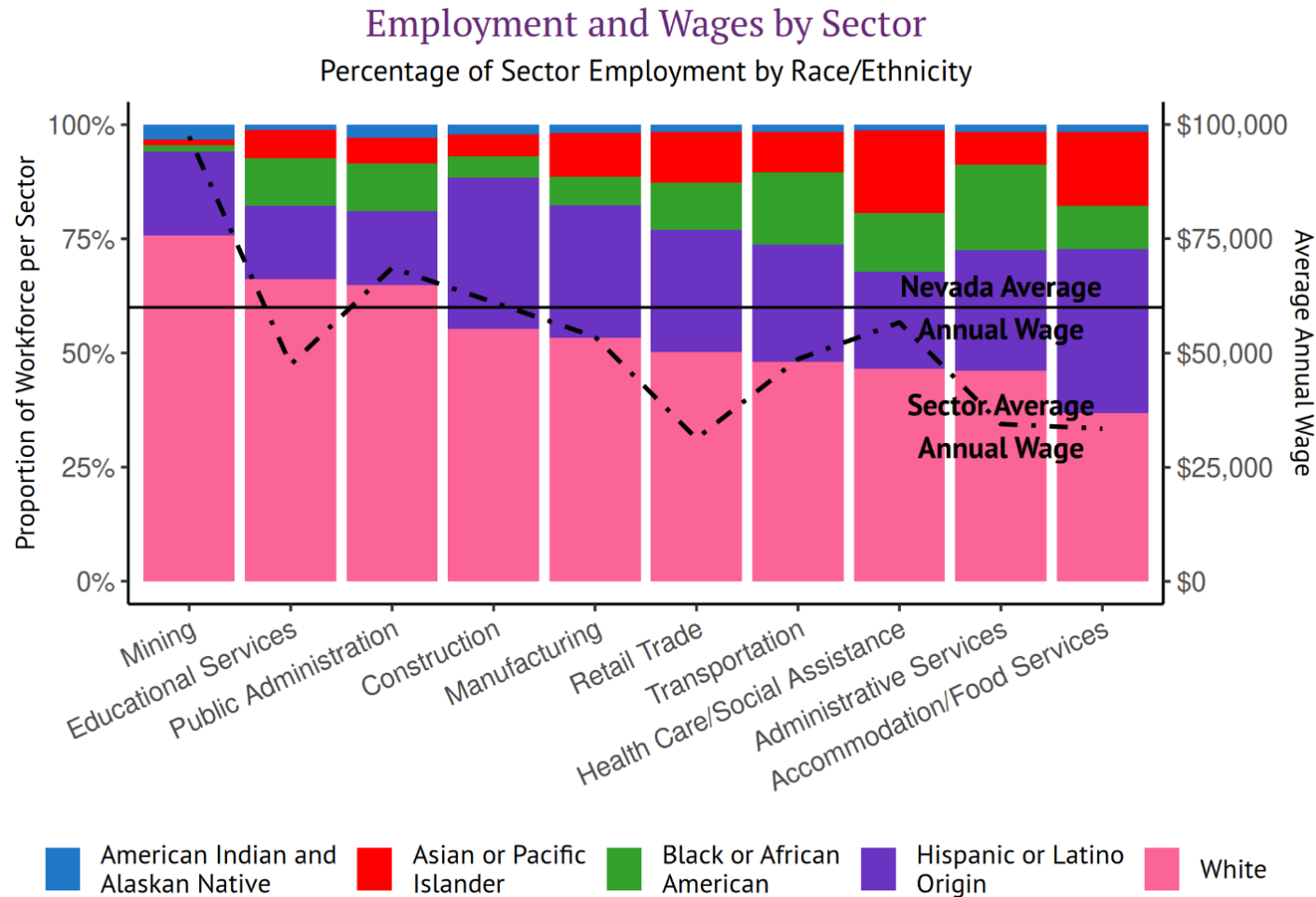
Total Civilian Non-institutional Population



- American Indian and Alaska Native
- Hispanic or Latino
- Total
- White (not Hispanic or Latino)
- Asian
- and Other Pacific Islander
- Two or more races
- Black or African American
- Some other race
- White (all)

Economic Impacts of COVID-19 Have Affected Communities of Color

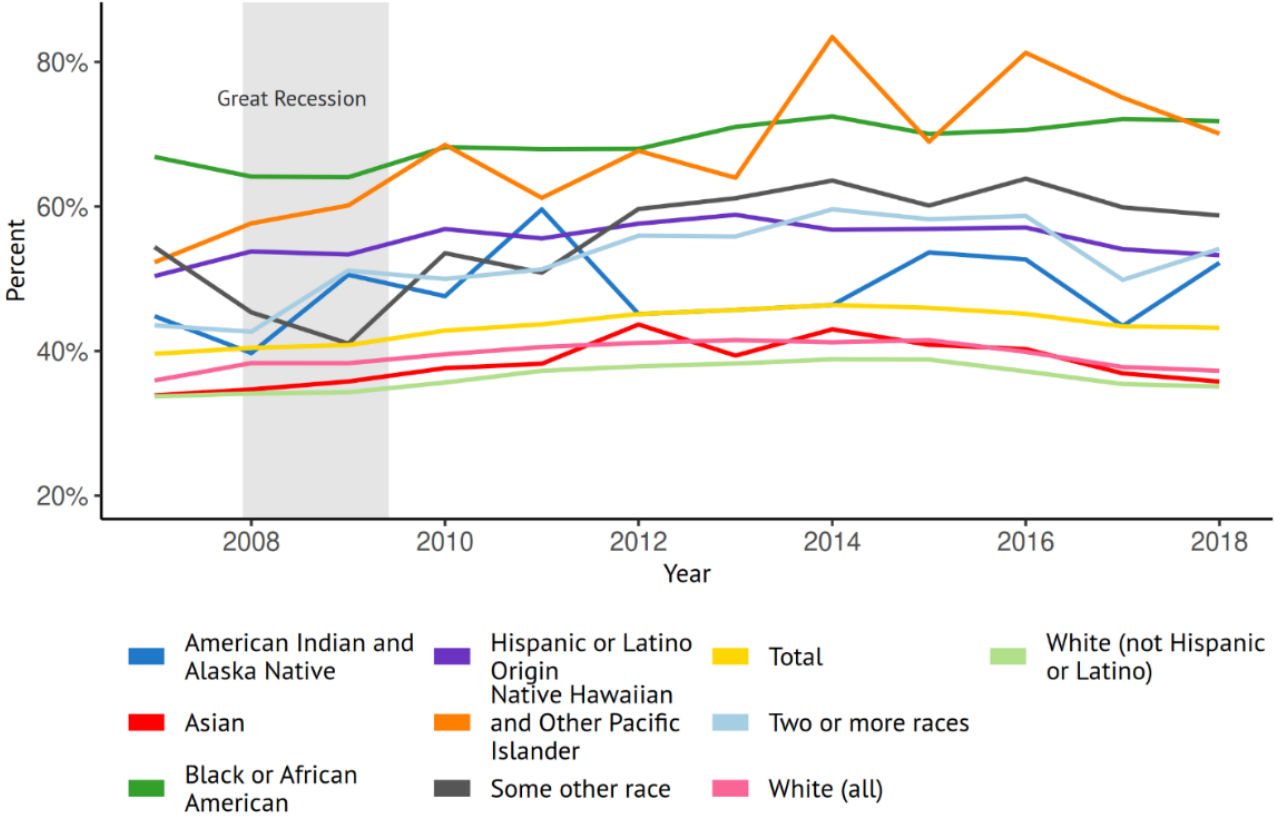
People of Color Are Overrepresented in Low-Wage Sectors



Economic Impacts of COVID-19 Have Affected Communities of Color

Most African Americans and Native Hawaiians/Pacific Islanders in Nevada Rent Their Homes

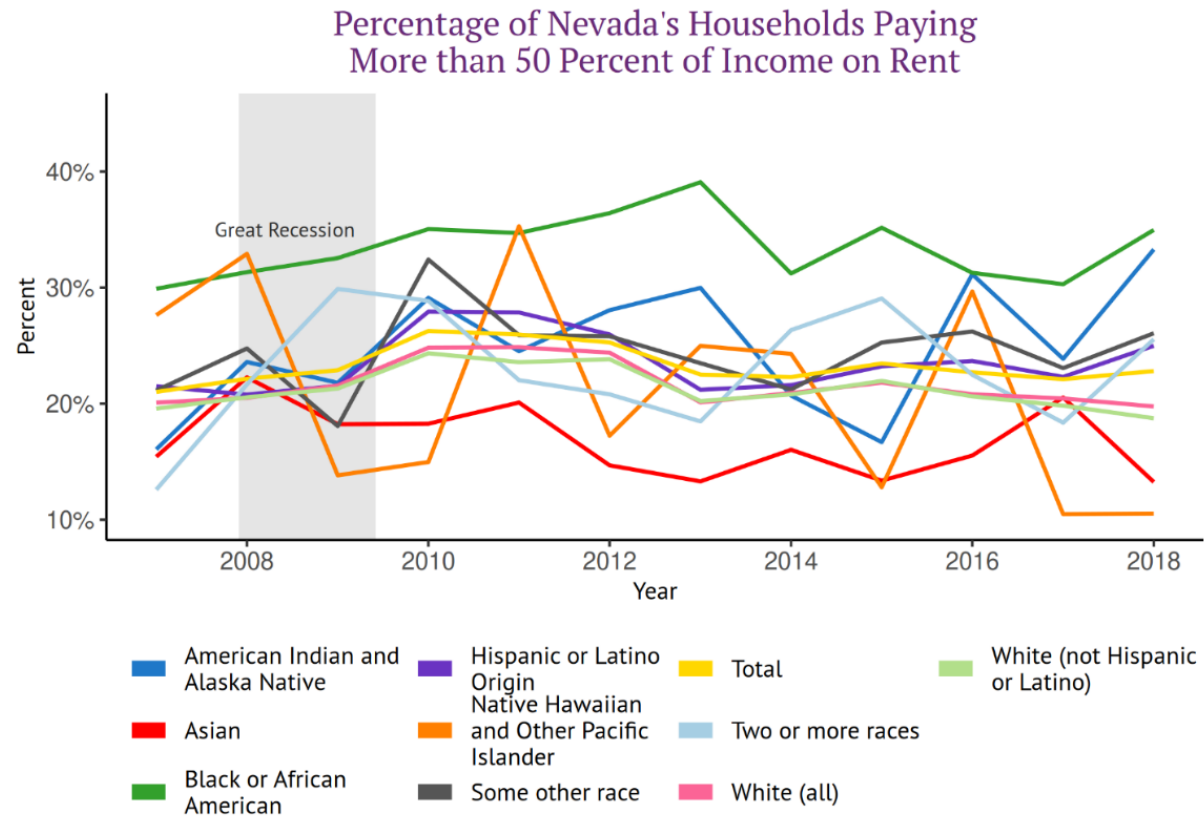
Demographics of Home Renting in Nevada



Source: U.S. Census Bureau

Economic Impacts of COVID-19 Have Affected Communities of Color

People of Color in Nevada Pay More than Half of Their Incomes on Rent



Source: U.S. Census Bureau

Between 272,000-327,000 Nevadans (or 118,000-142,000 households) could struggle to pay their rent by September 2020

Nevada Tenants Eviction Risk by Sept 2020

of people in rented housing at risk of eviction

Low-income individuals, people of color, and undocumented individuals are especially vulnerable to housing market disruptions

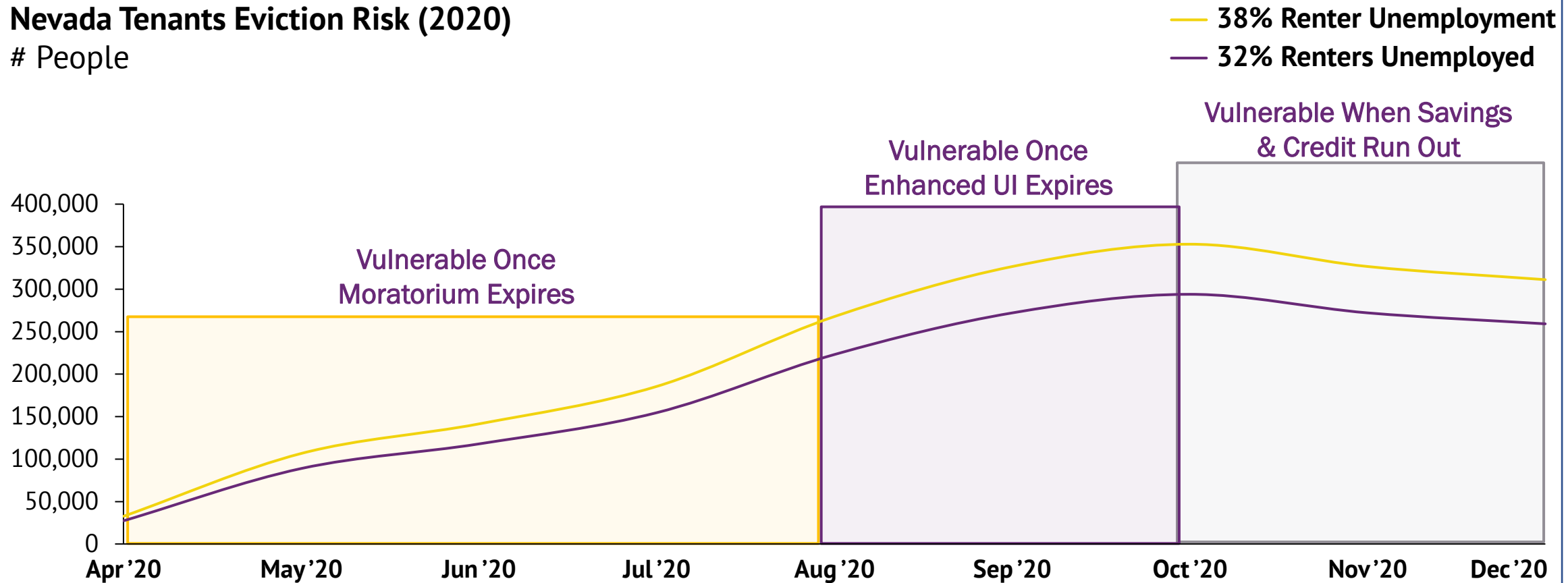


Source: COVID-19 Eviction Defense Project (CEDP) Model, 6/5/2020. See Methodology Page for Details.

The COVID-19 eviction crisis will have 3 phases; of the ~300K Nevadans at risk of eviction, people of color, low-income & undocumented renters are most vulnerable

Nevada Tenants Eviction Risk (2020)

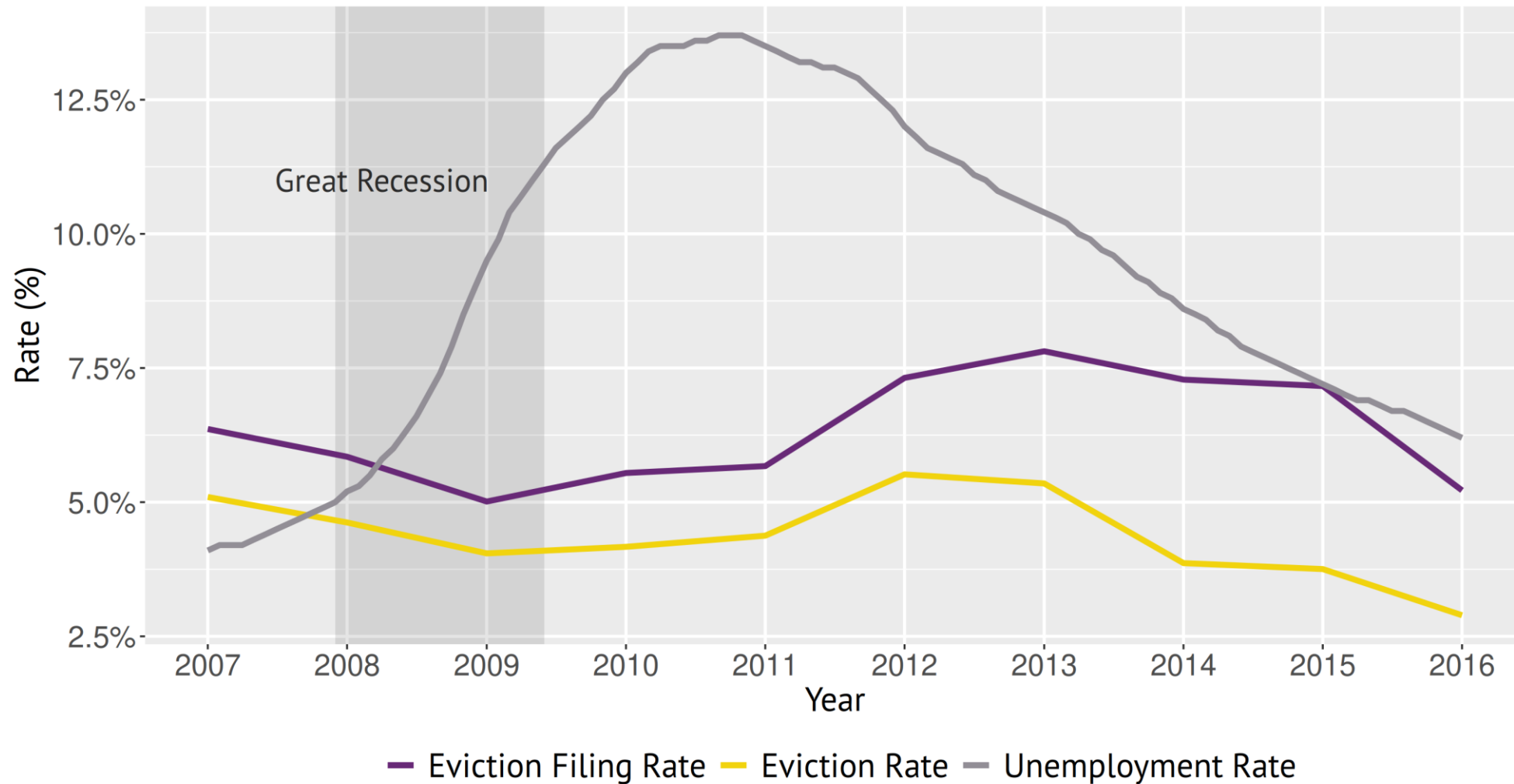
People



At Risk Groups

- Non-Citizens
- Citizens unable to access unemployment insurance (UI) & stimulus without savings
- African American & Latino/a Communities
- Middle- and moderate-income individuals & families with high rental cost burdens
- African American & Latino/a communities
- Lower-income citizens w/ low savings
- Middle-income families paying high-rents with savings or access to credit
- Families with low savings or access to credit
- Families with savings and access to credit after enhanced UI expires
- Lower-middle income families that saved UI and stimulus above typical income
- Multi-income families

Historical data reveals evictions increased in Nevada as unemployment declined, and the economy began to recover



Source: Guinn Center calculations, using data from EvictionLab.org and U.S. Bureau of Labor Statistics

Policymakers should consider the following policy options

Short-term action

- 1 Provide free testing and treatment for affected workers**
 - ❑ Expand access to (free) testing
 - ❑ Provide free treatment to dislocated workers and/or frontline industry workers
- 2 Increase funding for rental assistance programs**
 - ❑ Direct additional CARES funds to state/county rental assistance programs
- 3 Expand access to short-term training courses**
 - ❑ Ensure that cuts to higher education do not compromise accelerated training programs (such as CSN's Rapid Response/RE-HIRE Centers, etc.)
- 4 Support federal legislation that provides housing assistance**
 - ❑ Support federal legislation that provides housing assistance

Contact

About the Guinn Center

The [Guinn Center](#) is a 501(c)(3) nonprofit, nonpartisan, independent research center that seeks to identify evidence-based solutions through research, public engagement, and strategic partnerships.

Contact information:

Nancy Brune, Ph.D., Executive Director

Guinn Center

P.O. Box 750117

Las Vegas, Nevada 89136

Phone: 702-457-7509

Email: info@guinncenter.org

