



COC SUPPLEMENTAL TO ADDRESS UNSHELTERED HOMELESSNESS NOTICE OF FUNDING OPPORTUNITY

WEBINAR

TODAY'S PRESENTERS:

MARY CANNIZZARO

MARY DUFF

BRENDA HERBSTMAN

SHELLY JOHNSON


KRISTY MANNING



UNSHELTERED HOMELESSNESS AGENDA

- I. Introduction and Welcome**
- II. Unsheltered NOFO Overview**
 - a) Plan Presentation**
 - b) Eligible Projects**
 - c) Application Overview/What's needed to apply**
 - d) Budget Spreadsheet**
- III. CoC 101 Basics**
- IV. Q&A Session**

**If your agency decides not to apply, please consider being part of the Scoring & Ranking Team.*

A decorative graphic on the left side of the slide, consisting of a network of light blue lines and small circles, resembling a circuit board or a stylized tree structure.

OVERVIEW – COC SUPPLEMENTAL TO ADDRESS UNSHELTERED HOMELESSNESS

MAXIMUM AWARD

- **Total funds available = \$322,000,000**
 - **Rural Set Aside = \$54,500,000**
 - **Unsheltered Homeless Set Aside= \$267,500,000**
- **NV-500 = \$14,981,348 for a 36-month project period**
 - **This is all part of the urban community competition**

*Applications will be retained by the CoC/CCSS for other funding opportunities over the next 12 months

POLICY PRIORITIES

1. Unsheltered Homelessness

- Significantly greater health challenges and experiences of trauma and violence; Connections to health and housing resources

2. Rural areas

3. Tribal Lands

4. Coordination with a Variety of Stakeholders

- Affordable housing developers; mainstream service providers; business community; victim service providers; political leaders; healthcare providers

5. Advancing Equity

6. Using a Housing First Approach

**If your agency decides not to apply, please consider being part of the Scoring & Ranking Team.*

STEPS TO PREPARE SNH COC PROPOSAL

- Step 1 - Develop the Community Plan
- Step 2 - Host a local application process
- Step 3 – Develop narrative responses
- Step 4 – Submit SNH CoC Proposal



Engage People with
Lived Experience

If selected for funding, HUD will contract directly with agencies.

August 8, 2022	Draft of community plan posted to HHH: Serving Individuals and Families Experiencing Homelessness with Severe Service Needs
August 8, 2022 Webinar 1:00 PM – 3:00 PM	Unsheltered NOFO local application process released & webinar After session, the recording will be posted to HHH
August 8, 2022 – 3:00 PM	ZoomGrants opens <LINK>
Thursdays – August 11, 18 and 25, 2022 - 7:30 AM – 9:00 AM	Weekly office hours through August 31 st (link on helphopehome.org under funding opportunities) Email HelpHopeHome@ClarkCountyNV.gov ; subject line: Special NOFO
August 22, 2022 - 8:00 AM PDT	Agency application due at 8:00 AM PDT
August 30, 2022	Post finalized community plan: Serving Individuals and Families Experiencing Homelessness with Severe Service Needs
August 31, 2022- 8:00 AM PDT	Project application and match applications due 8:00 AM PDT
September 1, 2022	Scoring and Ranking Team trained and begin process
September 13, 2022	Scoring and Ranking Day for unsheltered projects (set up web ex link)
September 14, 2022	e-snaps training for selected projects (recorded) set up web ex link
October 4, 2022	e-snaps application due; Agencies must be available to make corrections on 10/4 – 10/6.
October 6, 2022	SNH CoC unsheltered homelessness application posted to HHH website
October 13, 2022	SNH CoC Board presentation for approval of application submission
October 20, 2022	SNH CoC unsheltered homelessness application due to HUD

COMMUNITY PLAN

SERVING INDIVIDUALS AND FAMILIES EXPERIENCING HOMELESSNESS WITH SEVERE SERVICE NEEDS

- Facing significant challenges or functional impairments – including physical, mental, developmental or behavioral health disabilities
- High utilization of crisis or emergency services to meet basic needs
- Currently living in an unsheltered situation or a history of living in an unsheltered situation
- Experiencing a vulnerability to illness or death
- Have a risk of continued or repeat homelessness
- Having a vulnerability to victimization – including physical, trafficking, or sex work



SERVING INDIVIDUALS AND FAMILIES EXPERIENCING HOMELESSNESS WITH SEVERE SERVICE NEEDS

August 1 and 2 – Hosted Six Listening Sessions

August 8 – Rough Draft of Plan posted to HHH

August 8 – 22 – Public Community – Strategy Sessions & HHH

August 30 – Final Draft posted to HHH



PRIORITIES

The NV-500 local application process prioritizes projects that:

- Expand unsheltered outreach efforts, including drop-in centers, to target individuals and families: living in vehicles, rural areas and/or areas with high activity at night (Las Vegas Boulevard, Downtown, and Freemont).
- Build equity through the implementation of specific outreach strategies, including licensed mental health outreach workers, to identify, shelter, and house sub-populations that experience severe service needs.
- Increase outreach targeting encampments, tunnels, and washes, following best practices and a data-driven approach to target the highest vulnerable persons experiencing unsheltered homelessness.
- Integrate comprehensive supportive service supports into emergency shelter and temporary housing to meet severe service needs.

PRIORITIES (CONTINUED)

- Mobilize low-barrier navigation centers that focus on placing persons experiencing unsheltered homelessness into permanent housing by providing case management and barrier-busting supportive services at one location.
- Identify a lead agency to direct community-wide landlord engagement efforts through the development of a recruitment plan that outlines recruitment/retention strategy, messaging, education, and training for a centralized, coordinated approach to maximize resources and eliminate disparities across subpopulations experiencing homelessness.
- Establish a project structure that is not time limited but rather allows for an individual experiencing homelessness to remain in project if progress goals are being met as determined by individualized case plans.
- Expand bridge housing with case management as a pre-support to permanent housing to help streamline placement and limit a person's length of time homeless.
- Expand non-congregate shelters for individuals and families with severe service needs and establish partnerships with medical and/or behavioral health providers.
- Expand rapid-rehousing projects that utilizes strategies like dynamic prioritization from the coordinated entry queue and/or shared housing to build equitable outcomes.

PRIORITIES (CONTINUED)

- Expand permanent supportive housing, using a peer-to-peer model, to meet the needs of individuals and families with severe service needs.
- Establish well-being respite plus programs to serve individuals and families experiencing severe service needs.
- Expand housing problem-solving model across emergency shelters and temporary housing projects, including a component for client follow-up support to prevent returns to homelessness.
- Expand the crisis stabilization services to create a robust continuum of care that aligns with housing first principles.
- Connect individuals and families with a history of unsheltered homelessness to shallow subsidies to maintain housing stability and prevent reentry into homelessness as a *Moving On* strategy from housing projects.
- Focus on policy-level solutions to increase the number of affordable housing units available in Southern Nevada.
- In collaboration with the appropriate Continuum of Care working groups, conduct an analysis of the coordinated entry system, housing assessments, policies, procedures, minimum standards, and specific pilot strategies, like dynamic prioritization, to connect individuals and families experiencing homelessness to permanent housing, creating a strategic plan to implement recommendations.

The 2022 Continuum of Care priorities that are also being met:

1 a. Expand short-term housing for individuals who have a lower vulnerability score on the community queue for shorter wait times through engaging in dynamic prioritization.

1 b. Increase housing that integrates behavioral health and treatment services into the design for the segment of the homeless population that experiences substance use disorder.

1 c. Expand rapid rehousing projects.

1 d. Provide a holistic client-centered approach by increasing access to additional supports, including behavioral health and insurance.

2 a. Increase the number of permanent supportive housing resources.

2 b. Expand peer to peer support for a client-centered approach to help navigate services.

2 c. Establish best practices to promote housemate pairing and expand the shared housing model.

5 b. Expand housing problem solving conversations to help guide and support the client.

6 a. Promote housing supports for families and individuals on a fixed income to help sustain housing.

7 a. Expand Street outreach efforts to increase awareness and referrals for housing services and other supports.

ELIGIBLE PROJECTS



ELIGIBLE APPLICANTS

Who is not eligible: individuals or for-profit companies.

Who is eligible: Non-profit organizations, State and local governments, instrumentalities of local governments, and public housing agencies.

Faith Based Organizations may apply on the same basis as any other organization, as set forth at 24 CFR 5.109

SAM Registration is required - must register at <https://www.sam.gov/SAM> before submitting an application.

Unique entity Identifier (UEI) Number is required. It must show active at www.sam.gov

Employer Identification Number (EIN) is required for all applicants and any subrecipients and contractors.

**If your agency decides not to apply, please consider being part of the Scoring & Ranking Team.*

ELIGIBLE PROJECTS

**Permanent
Supportive
Housing (PSH)**

**Rapid Re-Housing
(RRH)**

**Joint-Transitional
Housing/RRH**

**Supportive
Services Only
(SSO) Coordinated
Entry**

**SSO
Street Outreach**

SSO Other

APPLICATION OVERVIEW

YOU GET A BUDGET



YOU GET A BUDGET

makeameme.org

**BUDGET
SPREADSHEET**

ELIGIBLE COSTS

- It is important to recognize what costs are eligible and allowable under HUD funding and include only those costs in your initial budget.
- You can also identify costs that would support your project but are not eligible costs. These may be eligible under another funding source that we can identify for you later.
- CoC Program Toolkit - CoC Program Components and Eligible Costs:
 - <https://www.hudexchange.info/programs/coc/toolkit/program-components-and-eligible-costs/#overview-of-program-components-and-eligible-costs>
- CoC Program Interim Rule - Code of Federal Regulations
 - <https://www.govinfo.gov/content/pkg/CFR-2017-title24-vol3/xml/CFR-2017-title24-vol3-part578.xml>



The budget is for a 3 year period of time.

We've included some suggestions for ramp-up periods in year 1.

Please be realistic with your expenses. Do not pad the budget.

If expenses do not appear realistic or match the narrative, your project is unlikely to be selected.

**If your agency decides not to apply, please consider being part of the Scoring & Ranking Team.*



memegenerator.net

THE BUDGET WORKBOOK

Ensure that each worksheet is complete

Follow the helpful hints throughout the workbook

Non-eligible costs


Join Office Hours if you have any questions

Many sections should* auto-calculate


I have a budget?



*If I set it up correctly!



CONTINUUM OF CARE 101 BASICS



WHO EXPERIENCES HOMELESSNESS?



HUD DEFINITIONS OF HOMELESSNESS

US Department of Housing and Urban Development (HUD) defines homelessness in these four categories. The categories are:

1. Individuals and families who lack a fixed, regular, and adequate nighttime residence and includes a subset for an individual who resided in an emergency shelter or a place not meant for human habitation and who is exiting an institution where he or she temporarily resided
2. Individuals and families who will imminently lose their primary nighttime residence
3. Unaccompanied youth and families with children and youth who are defined as homeless under other federal statutes who do not otherwise qualify as homeless under this definition*
4. Individuals and families who are fleeing, or are attempting to flee, domestic violence, dating violence, sexual assault, stalking, or other dangerous or life-threatening conditions that relate to violence against the individual or a family member.

*Those at risk of losing their primary nighttime residence may be served by communities who meet certain criteria. SNH CoC does not meet the criteria at this time.

HUD DEFINITIONS OF HOMELESSNESS

1. Literal homelessness

- Sleeping unsheltered, including a car, park, bus or train station, etc.
- Living in an emergency shelter or transitional housing
- Exiting an institution where they stayed for less than 90 days and were literally homeless immediately prior to entering d text

2. At risk of homelessness

- Will lose primary residence within 14 days
- Has nowhere else to go
- Has No resources or support networks to obtain permanent housing

HUD DEFINITIONS OF HOMELESSNESS

3. Unstably Housed (Title I Education definition)

- Families with children or unaccompanied youth who are and are likely to remain unstably housed
- Who have not had a lease or ownership of a housing unit in the last 60 or more days
- Has had two or more moves in the last 60 days
- May have disability or multiple barriers to employment

4. Fleeing/Attempting to flee domestic violence

- Fleeing, or attempting to flee DV
- Has no subsequent residence that has been identified
- Has no resources or support networks to obtain permanent housing

CHRONICALLY HOMELESS

Live in a place not meant for human habitation, a safe haven, or in an emergency shelter

Have been homeless for 1 year or on at least 4 separate occasions in the last 3 years where the combined length of homelessness has been 12 months

Has a disability

Percent of available homeless beds occupied during the night of the census

87%



91%

Emergency Shelter

72%

Transitional Housing

5,645

People were experiencing homelessness in Southern Nevada on February 23, 2022

51%

2,867

were unsheltered

49%

2,778

were sheltered

92%

2,634

on the street, outdoors, vehicles, desert, encampments

8%

233

Courtyard Resource Center

80%

2,229

in Emergency Shelter

20%

549

in Transitional Housing

516

individuals were in Families with Children

314

individuals were unaccompanied youth and young adults

571

individuals were Veterans

52%

White

37%

Black or African American

1.8%

Multiple Races

1.7%

American Indian or Alaska Native

2.2%

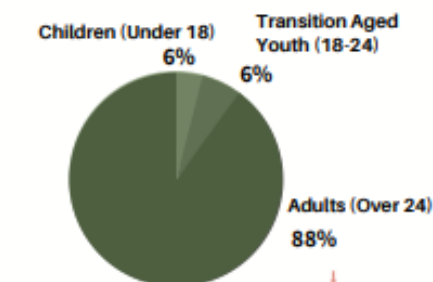
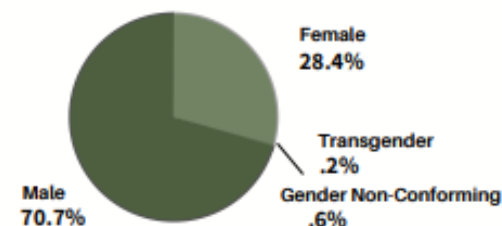
Asian

5.4%

Native Hawaiian or Other Pacific Islander

15% | 85%

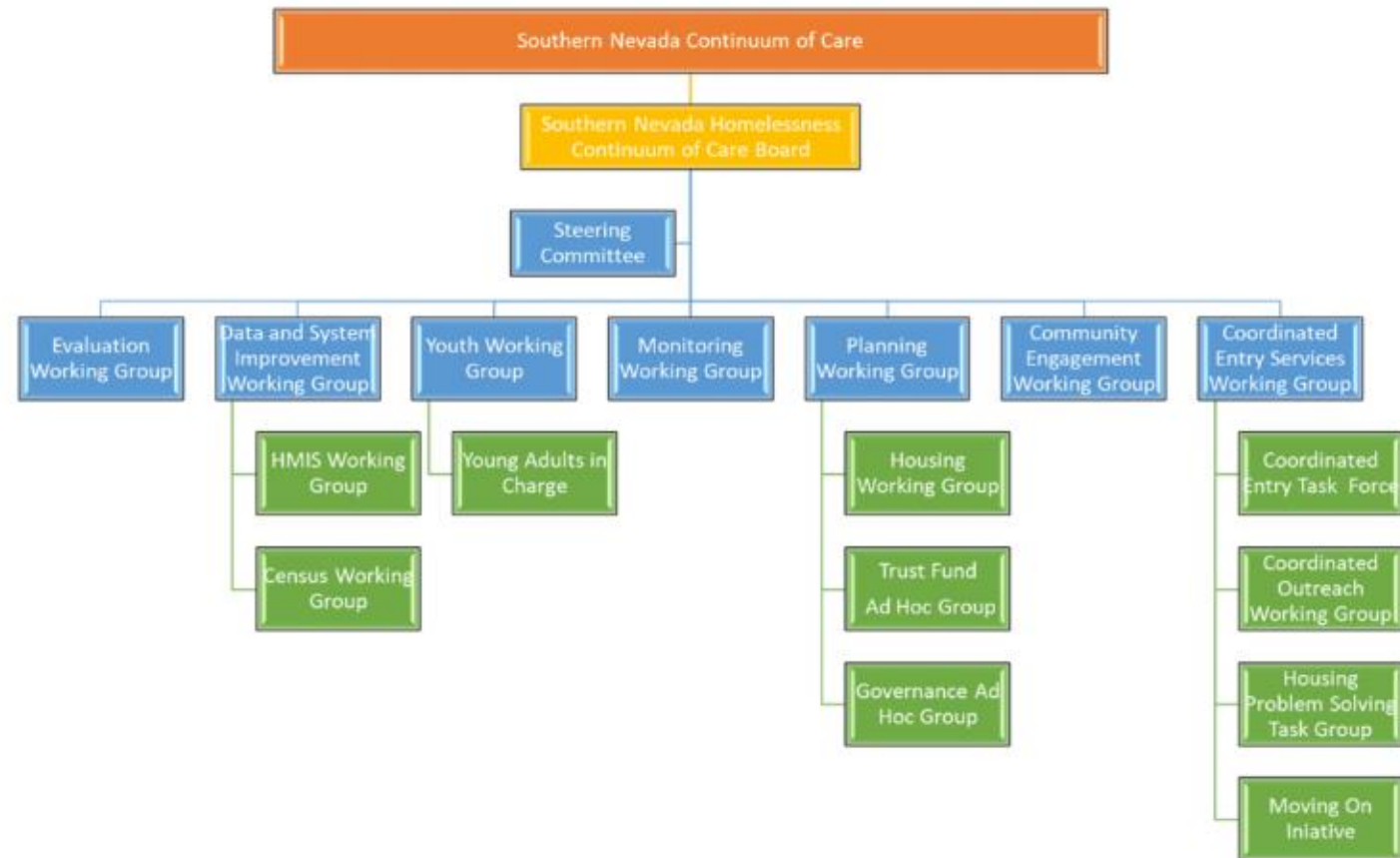
Hispanic/Latino | Non-Hispanic/Non-Latino



A Healthy System of Care



Organizational Structure





QUESTIONS AND ANSWERS



RESOURCES

ZoomGrants application –

<https://www.zoomgrants.com/gprop.asp?donorid=2092&limited=4156>

ZoomGrants Support-

<http://help.zoomgrants.com/index.php/article-categories/applicantkbs/>

Code of Federal Regulations (CFR) –

<https://www.govinfo.gov/content/pkg/CFR-2017-title24-vol3/xml/CFR-2017-title24-vol3-part578.xml#seqnum578.59>