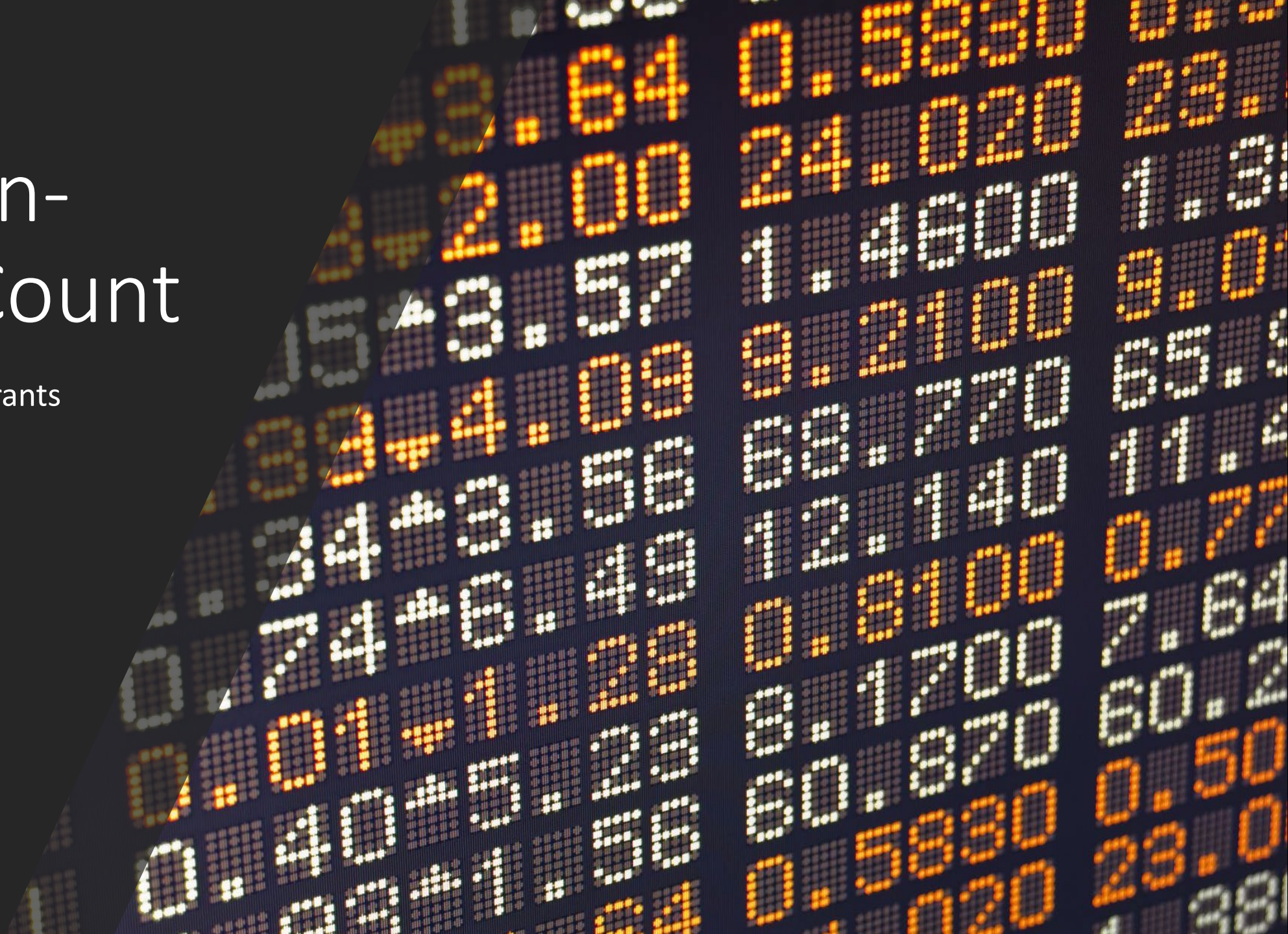


Point-In-Time Count

Mary Duff, CoC Grants
Coordinator, CCSS



Census Sub-Working Group Participants

- Co-Chairs: Denise Charles and Mary Duff
- Catholic Charities
- City of Henderson
- City of Las Vegas **
- City of North Las Vegas**
- Clark County Social Service **
- Help of Southern Nevada
- Nevada Homeless Alliance
- Nevada Partners
- Nevada Partnership for Homeless Youth
- St. Jude's Ranch for Children
- The Just One Project
- Veterans Affairs

HUD's 14 Minimum Standards

General PIT Count Standards

- CoCs are responsible for planning and conducting, at least biennially, a PIT count of homeless persons within the geographic area that meets HUD's requirements.
- The sheltered and unsheltered PIT counts must be conducted during the last 10 days in January and represent all homeless persons who were sheltered and unsheltered on a single night during that period.
- The final PIT count methodology must be approved by the CoC in accordance with the CoC's governance charter.

HUD's 14 Minimum Standards

Standards Regarding Con Plan Jurisdictions Coordination

- All CoCs should consult and collaborate with all Con Plan jurisdictions in the geographical boundary of the CoC, including those that do not have ESG funding, to assist the jurisdictions in submitting PIT count data that is relevant to completing their Con Plans.
- CoCs must provide PIT count data to the entity(ies) responsible for the Con Plan jurisdiction(s) associated with the CoC.

HUD's 14 Minimum Standards

Unsheltered PIT Count Standards

- CoCs must account for and report on all unsheltered homeless people residing in the CoC's geography through a census (complete coverage) or one or more sampling and extrapolation methods that are consistent with HUD standards and guidance. HUD will evaluate the nature and basis for estimation and extrapolation of CoCs' unsheltered count in the annual CoC Program Competition.
- CoCs may exclude geographic areas where the CoC has determined that there are no unsheltered homeless people, including areas that are uninhabitable (e.g., deserts). CoCs must document the criteria and decision-making process used to identify and exclude specific geographic areas.
- CoCs must be able to verify that the unsheltered homeless people identified in the count are unsheltered on the night designated for the count, as defined at 24 CFR 578.3 the **Homeless Definition Final Rule**:

“An individual or family with a primary nighttime residence that is a public or private place not designed for or ordinarily used as a regular sleeping accommodation for human beings, including a car, park, abandoned building, bus or train station, airport, or camping ground.”

HUD's 14 Minimum Standards

Sheltered PIT Count Standards

- CoCs must account for and report on all sheltered homeless people residing in the CoC through a census (complete coverage) or one or more sampling and extrapolation methods that are consistent with HUD standards and guidance. HUD will evaluate the nature and basis for estimation and extrapolation of CoCs' sheltered count in the annual CoC Program Competition.
- CoCs may exclude geographic areas where the CoC has determined that there are no unsheltered homeless people, including areas that are uninhabitable (e.g., deserts). CoCs must document the criteria and decision-making process used to identify and exclude specific geographic areas.

- CoCs must be able to verify that the sheltered homeless people identified in the count are sheltered on the night designated for the count, as defined at 24 CFR 578.3 of the **Homeless Definition Final Rule**:

“An individual or family living in a supervised publicly or privately operated shelter designated to provide temporary living arrangement (including congregate shelters, transitional housing, and hotels and motels paid for by charitable organizations or by federal, state, or local government programs for low-income individuals).”

HUD's 14 Minimum Standards

Data Quality Standards

- CoCs must ensure that during the PIT count homeless persons are only counted once. It is critical that the counting methods be coordinated to ensure that there is no double-counting. Therefore, CoCs must also collect sufficient information to be able to reliably deduplicate the PIT count (i.e., ensure that the same homeless person was not counted more than once).
- Surveys of people for the sheltered or unsheltered count must be administered in a manner that protects participant privacy and safety, as well as the safety of the person completing the survey.
- CoCs are required to ensure that people conducting the PIT count, including project staff and community volunteers, are appropriately trained about count standards, data collection procedures, and protocols for privacy, security, and personal safety.

2023 Point-In-Time Count

Coordinated across CoC's for a night of Jan. 25

Volunteer-led effort

Full coverage approach

Eliminate zero tracts

- Past zero tracts
- Gate communities
- Large desert areas

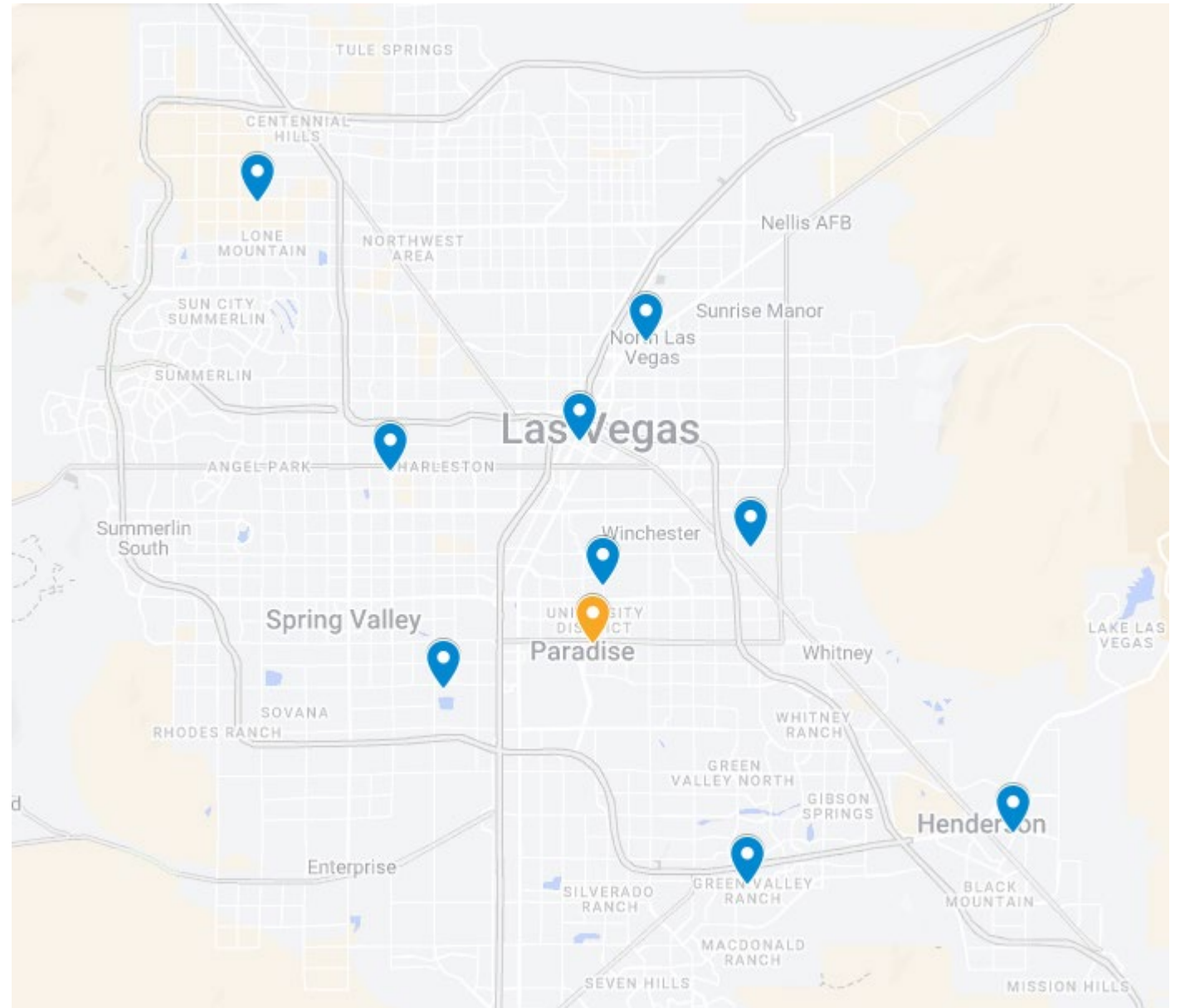
Live Surveying

Tunnel/Wash

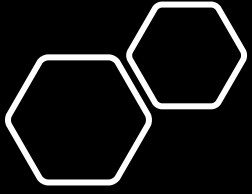
Known Locations

- There are over 500 miles of tunnels/wash
- Between 100 and 150 miles are occupied
- Outreach teams – no general volunteers

2023 Deployment Sites



| | | |
|-----------------------------------|--|---|
| Training Team | All tasks related to captain and volunteer training | CCSS, The Just One Project, Nevada Homeless Alliance |
| Survey Team | Determining which questions can be eliminated or expanded upon in order to make the responses relevant to work being done within the community | CCSS, HELP of Southern Nevada Partners, Nevada Partnership for Homeless Youth |
| Volunteer Recruitment Team | All tasks related to increasing corporate and community volunteers to support the determined methodology, including a volunteer recruitment plan | CCSS, Nevada Homeless Alliance, Nevada Partners |
| Youth Team | All tasks related to youth specific strategies | CCSS, HELP of Southern Nevada, Nevada Partners, Nevada Partnership for Homeless Youth |
| Tunnel Team | Determine methodology and planning for a tunnel/wash specific count | CCSS, Coordinated Outreach Working Group (HELP of Southern Nevada, City of Henderson, City of Las Vegas, and City of North Las Vegas) |



Survey

- Survey 123
- Bus pass

Anticipated Changes for 2023 HIC and PIT Count

The only anticipated change is an expansion to the age categories for the PIT count.

Current Response Options

- 1) Under 18
- 2) 18-24
- 3) 25 and Older



Anticipated Changes to Response Options

- 1) Under age 18
- 2) 18-24
- 3) 25-34
- 4) 35-44
- 5) 45-54
- 6) 55-64
- 7) 65 and older

Helping you service give improve offer time
socialising training skill however grateful love
caring impact rewarding time fun support local positive
community involved opportunity social motivate
Volunteering
promote respect projects happy
human forward generous feeling build
united inspirer hope development
Volunteer
good available quality altruistic talent
difference tender
initiative activity treasures life
thank
worth